

**INDIANA DEPARTMENT OF ENVIRONMENTAL MANAGEMENT  
WATER POLLUTION CONTROL BOARD  
NOTICE OF PUBLIC MEETING**

The Water Pollution Control Board (WPCB) will hold two public meetings on the Coalition on Wetland Issues Citizens' Petition requesting amendments to rules concerning Section 401 Water Quality Certification & Wetland Water Quality Standards. The petition addresses the establishment of water quality standards for wetlands and for establishment of procedures and criteria for certifications requested under section 401 of the Clean Water Act. These meetings will be held on:

Tuesday, March 12, 2002, from 6 p.m. to 9 p.m., local time, at the Columbus East High School Auditorium, 230 S. Marr Rd., Columbus, Indiana;

Thursday, March 21, 2002, from 6 p.m. to 9 p.m. at Plymouth High School Auditorium, 1 Big Red Drive, Plymouth, Indiana; The Coalition Citizens' Petition is available online at [www.in.gov/idem/water/planbr/rules/121201wpcbpacket/altwetlandsruledraft.pdf](http://www.in.gov/idem/water/planbr/rules/121201wpcbpacket/altwetlandsruledraft.pdf) and is also available upon request from the Indiana Department of Environmental Management, 100 N. Senate Ave., P.O. Box 6015, Indianapolis, IN 46206-6015 (Attention: Larry Wu). Questions or comments may be forwarded to the same address or by calling 317-234-1805, by fax at 317-232-8406 or by email at [lwu@dem.state.in.us](mailto:lwu@dem.state.in.us).

---

---

**INDIANA DEPARTMENT OF ENVIRONMENTAL MANAGEMENT  
Office of Water Quality  
Notice of Public Comment Period and Public Meetings  
Updated List of Impaired Waters under Section 303(d) of the CWA**

**INTRODUCTION**

The Indiana Department of Environmental Management's (IDEM) Office of Water Quality is preparing to update its List of Impaired Waters, as required by Section 303(d) of the federal Clean Water Act. Under the Act, each state is required to assess its waters for compliance with the state's water quality standards, which are developed to protect beneficial uses for which the waters may be designated (fishing, swimming, drinking, etc.). The state is then required to periodically prepare and make public a list of those waters not meeting water quality standards after the implementation of technology-based effluent limits or other pollution control programs. The Impaired Waters List will include the portion of the waterbody that is impaired, the pollutant(s) not meeting water quality standards thus causing the impairment, and a schedule for development of a Total Maximum Daily Load (TMDL) for the pollutant causing the impairment. The list must be submitted to EPA by October 1, 2002.

A TMDL evaluation is a process that leads to the quantification of the amount of a specific pollutant discharged into a waterbody that can be assimilated and still meet the water quality standards. What constitutes a pollutant is described in section 502(6) of the Clean Water Act, and includes materials such as sewage, chemical wastes, biological materials, and industrial, municipal, and agricultural waste. The definition also encompasses drinking water contaminants that are regulated under section 1412 of the Safe Drinking Water Act. The TMDL will identify how much of the pollutant is coming from point sources and nonpoint sources. It will also specify the amount of pollutant reduction necessary from each source in order to meet the water quality standard set for that pollutant. A plan to reduce the amount of the pollutant coming from each source will be developed and implemented. The public will be invited to participate in the plan to develop and implement the TMDL.

**REQUEST FOR PUBLIC COMMENTS**

Pursuant to IC 13-18-2-3, the 2002 list will have a 90-day public comment period. The public is invited to review the list, and offer comments and suggestions as to the specific waterbodies included. Any person having water quality data to support or refute the listing of a specific waterbody or to add a waterbody to the list will be able to provide that information to IDEM during the public comment period. The list will also be available March 1 on IDEM's website at <http://ww.in.gov/idem/>, Browse Topics for Water. Mailed comments should be addressed to:

Timothy Kroeker, 303(d) List Manager  
Assessment Branch  
Office of Water Quality  
Indiana Department of Environmental Management  
P.O. Box 6015  
Indianapolis, IN 46206-6015.

Hand delivered comments will be accepted by the receptionist on duty at the IDEM Assessment Branch offices located at 2525 N. Shadeland Avenue, Suite 100, Monday through Friday, between 8:15 a.m. and 4:45 p.m.

Comments by facsimile may be sent to (317) 308-3219, Monday through Friday, between 8:15 a.m. and 4:45 p.m. Please confirm timely receipt of faxed comments by calling Timothy Kroeker at 317-308-3205, or toll free at (800) 451-6027.

### **PUBLIC COMMENT PERIOD DEADLINE**

This public comment period will begin on March 1, 2002, and end on May 29, 2002. Comments must be postmarked, hand delivered or faxed no later than May 29, 2002.

### **PUBLIC MEETINGS**

IDEM is planning three statewide public meetings to discuss the list. These meetings will be held on the following dates:

Tuesday, March 5th - 7:00 p.m.- 9:00 p.m.

Indiana Vocational Technical College (IVY Tech) Auditorium

1 West 26th St

Indianapolis IN 46206

Tuesday, March 19th - 7:00 p.m.- 9:00 p.m.

Vincennes University Cafeteria

850 College Avenue

Jasper IN 47546

Wednesday, March 27th - 7:00 p.m.- 9:00 p.m.

Plymouth Public Library

201 N. Center St

Plymouth IN 46563

### **CONSOLIDATED LISTING METHODOLOGY**

For the development of the 2002 303(d) list, the Indiana Department of Environmental Management (IDEM) has followed, to the degree possible, the 305(b) and 303(d) reporting methods outlined in the United States Environmental Protection Agency's (EPA) 2002 Integrated Water Quality Monitoring and Assessment Report Guidance. This integrated report is designed to satisfy the Clean Water Act (CWA) requirements for both Section 305(b) water-quality reports, and Section 303(d) lists. The 303(d) list was developed using the 305(b) Assessment Database. Interpretation of the data and listing decisions take into account IDEM's assessment methodologies, EPA guidance, and recommendations outlined by Indiana's TMDL Advisory Group.

One aspect of the Integrated Water Quality Monitoring and Assessment Report Guidance calls for a comprehensive listing of all monitored or assessed water bodies in the state based on the state's assessment and listing methodology. Each waterbody is to be placed in one of five categories depending on the degree to which it supports designated uses. Delineation of these water-bodies or assessment units (AUs) will be based on the National Hydrography Dataset (NHD). The NHD is a database created by EPA and the United States Geological Survey that provides a comprehensive coverage of hydrographic data for the United States. It uniquely identifies and interconnects the stream segments that comprise the nation's surface-water drainage system. It also contains information for other common surface water bodies such as lakes, reservoirs, estuaries, and coastlines. States may use spatial resolution on a finer scale than the NHD, but EPA will translate that resolution into the NHD system. An explanation of the five categories is given below. The actual 303(d) list will consist of all AUs listed in category five. [It should be noted that the guidance does not change existing rules for listing and de-listing. The existing regulations still require states, at the request of the EPA's Regional Administrator, to demonstrate good cause for not including waterbodies on the 303(d) list that were included on previous 303(d) lists (pursuant to 40 CFR 130.7(b)(6)(iv)).]

#### **5 Categories for all assessed and/or monitored AUs (Assessment Units) in Indiana.**

**1) Attaining the water quality standard and no use is threatened.** AUs should be listed in this category if there are data and information that meet the requirements of the state's assessment and listing methodology and support a determination that the water quality standard is attained and no use is threatened.

**2) Attaining some of the designated uses; no use is threatened; and insufficient or no data and information is available to determine if the remaining uses are attained or threatened.** AUs should be listed in this category if there are data and information which meet the requirements of the state's assessment and listing methodology to support a determination that some, but not all, uses are attained and none are threatened.

**3) Insufficient or no data and information to determine if any designated use is attained.** AUs should be listed in this category where the data or information to support an attainment determination for any use is not available, consistent with the requirements of the state's assessment and listing methodology.

**4) Impaired or threatened for one or more designated uses but does not require the development of a TMDL.**

**A. TMDL has been completed and approved by EPA.** Monitoring should be scheduled for these AUs to verify that the water quality standard is met when the water quality management actions needed to achieve all TMDLs are implemented.

**B. Other pollution control requirements are reasonably expected to result in the attainment of the water quality standard in the near future.** Consistent with the regulation under 130.7(b)(i),(ii), and (iii), AUs should be listed in this subcategory where other pollution control requirements required by local, state, or federal authority are stringent enough to achieve any water quality standard (WQS) applicable to such waters. Monitoring should be scheduled for these AUs to verify that the water quality standard is attained as expected.

C. **Impairment is not caused by a pollutant.** AUs should be listed in this subcategory if the impairment is not caused by a pollutant.

**5) The water quality standard is not attained. The AU is impaired or threatened for one or more designated uses by a pollutant(s), and requires a TMDL.** This category constitutes the Section 303(d) list of waters impaired or threatened by a pollutant(s) for which one or more TMDL(s) are needed. An AU should be listed in this category if it is determined, in accordance with the state's assessment and listing methodology, that a pollutant has caused, is suspected of causing, or is projected to cause an impairment. Where more than one pollutant is associated with the impairment of a single AU, the AU will remain in Category 5 until TMDLs for all pollutants have been completed and approved by EPA.

A logic diagram summarizing how AUs are to be placed in the five categories above can be found in Figure 1.

Table 1 consists of Category 5 Assessment Units or the 303(d) list of impaired waters for Indiana.

#### **DEVELOPMENT OF DRAFT 2002 303(d) LIST**

The TMDL development schedule corresponds with IDEM's basin-rotation monitoring schedule. The Indiana Department of Environmental Management has divided the state into five major water management basins. The monitoring strategy calls for rotating through each of these basins once every five years. Waters on the 303(d) list will be targeted for additional work as sampling crews are working in the respective basins. To take advantage of all available resources for TMDL development, waters on the 303(d) list will be scheduled for TMDL development according to the basin-rotation schedule unless there is a significant reason to deviate from this schedule. Waters have been scheduled to begin TMDL development over 15 years (2002 – 2016). Since the Clean Water Act does not clearly define the timeline for TMDL development, EPA, in response to the Federal Advisory Committee Act (FACA) Committee's recommendations, issued guidance for States to develop expeditious schedules of not more than 8 – 15 years.

The 2002 303(d) list contains 485 waterbodies compared to 208 for the 1998 303(d) list. Further review may indicate some of the waterbodies on the 1998 list should be listed under another category. This does not necessarily reflect a declining trend in water quality, but is primarily a by-product of improved and increased monitoring. In addition the list does not imply that all impaired waters of the state are listed. For a stream to be listed it must have been monitored and the data collected must support 303(d) listing.

As mentioned under the consolidated listing methodology section of this document, the 2002 303(d) list was developed using IDEM's 305(b) assessment database. The data sources for the 305(b) database include the following:

- 1) Indiana Department of Environmental Management (IDEM) 305(b) Reports
- 2) IDEM Fixed Station Monitoring Data
- 3) IDEM TMDL Program Sampling Data
- 4) ISDH Fish Consumption Advisory
- 5) IDEM Fish And Macroinvertebrate Biological Survey Data
- 6) IDEM Surficial Aquatic Sediments Data
- 7) IDEM Lake Water Quality Assessment Program Data
- 8) IDEM Pesticide Monitoring Program Data
- 9) IDEM Bacteriological Sampling Program Data
- 10) IDEM Watershed Monitoring Program Data
- 11) 1991-1992 EPA fish community survey data for the Central Corn Belt Plain and the White River drainage
- 12) Dr. James Gammon's 1997 report on the biological assessment of several streams in west central Indiana
- 13) Marion County Health Department data
- 14) Ohio River Valley Water Sanitation Commission (ORSANCO) Ohio River monitoring data
- 15) 1997 Bloomington/Monroe County Urban Non-point Source Pollution Assessment and Brief Planning Feasibility Study
- 16) USGS water quality data
- 17) Indiana Department of Natural Resources (IDNR) Fishery Reports
- 18) Most recent Section 319(a) non-point assessment data
- 19) Safe Drinking Water Act Section 1453 Source Water Assessment data
- 20) 1998 303(d) list
- 21) Data from various other sources considered valid for 303(d) listing

Further information about the 2002 Impaired Waters List can be obtained by contacting Timothy Kroeker at 317-308-3205 or tkroeker@dem.state.in.us, or by calling IDEM's toll free number 1-800-451-6027.

**Other Notices**

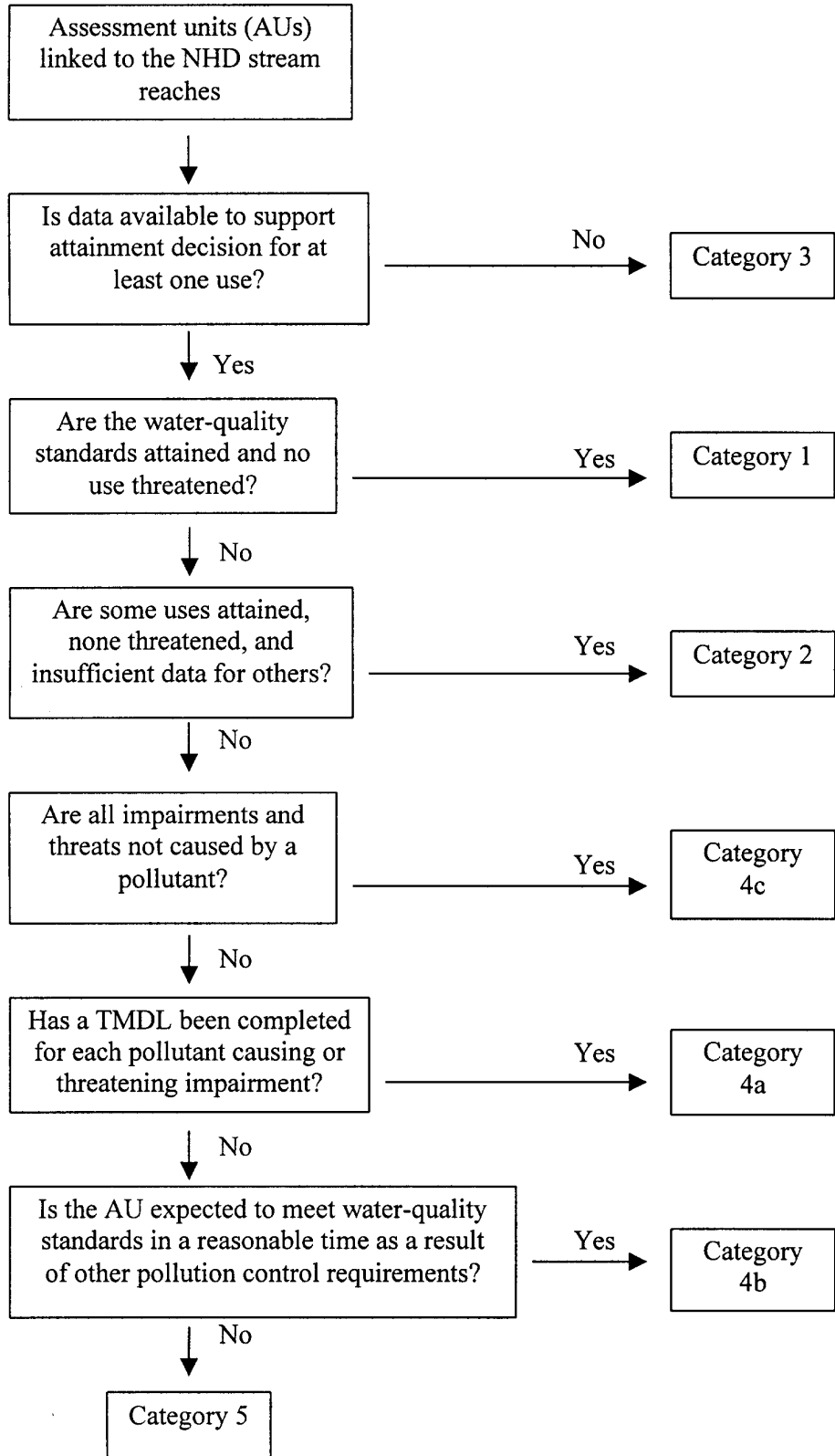


Figure 1 Consolidated Listing Logic Diagram

Table 1: 2002 303(d) list for Indiana\*

Parameters of Concern are abbreviated as follows: FCA, Fish Consumption Advisory; PCB, Polychlorinated biphenyls; Hg, Mercury; DO, Dissolved Oxygen; PAH, Polyaromatic Hydrocarbons

Waterbody Name	County	Major Basin	Parameter(s) of Concern	TMDL Development Schedule**	303(d) #
Grand Calumet River - Gary to Indiana Harbor Canal	Lake	GREAT LAKES	FCA for PCB & Hg; Cyanide, Oil and Grease; Pesticides; Impaired Biotic Communities; E. coli; Cadmium; Zinc; PAH	1998 - 2004	8
Grand Calumet River - headwaters	Lake	GREAT LAKES	FCA for PCB & Hg; Cyanide; Oil and Grease; Pesticides; Impaired Biotic Communities; Ammonia	1998 - 2004	8
Grand Calumet River - Illinois to Indiana Harbor Canal	Lake	GREAT LAKES	FCA for PCB & Hg, Ammonia; Cyanide; Pesticides; Chlorides; Impaired Biotic Communities; Organics; PAH; Cadmium; Nickel; Zinc; Organic Enrichment; E. coli	1998 - 2004	9
INDIANA HARBOR	Lake	GREAT LAKES	FCA for PCB & Hg; Pesticides; DO; Lead; Cyanide; E. coli	1998 - 2004	11
Indiana Harbor Canal main channel	Lake	GREAT LAKES	FCA for PCB & Hg; Pesticides; Metals; Lead; E. coli; PAH	1998 - 2004	11
Lake George Branch - IHC	Lake	GREAT LAKES	FCA for PCB & Hg; Oil and Grease; Pesticides; Impaired biotic Communities; Metals; E. coli; PAH	1998 - 2004	12
Deep River - Burns Ditch	Lake	GREAT LAKES	E. coli	2000 - 2004	5
LAKE MICHIGAN SHORELINE	Lake, Porter, LaPorte	GREAT LAKES	E. coli	2000 - 2004	17
LITTLE CALUMET RIVER	Porter, LaPorte	GREAT LAKES	E. coli	2000 - 2004	22
LITTLE CALUMET RIVER	Lake	UPPER ILLINOIS	Cyanide; Pesticides; DO	2000 - 2004	23
Burns Ditch	Lake	GREAT LAKES	Cyanide; E. coli; Pesticides	2000 - 2004	24
Little Calumet River	Lake	GREAT LAKES	Cyanide; E. coli	2000 - 2004	24
Beanblossom Creek	Brown, Monroe	WEST FORK WHITE	E. coli	2001 - 2005	100
Connelly Ditch	Clay	WEST FORK WHITE	E. coli	2001 - 2005	105
Duck Creek; Duck Creek - Elwood to Polywog Creek	Madison, Tipton, Hamilton	WEST FORK WHITE	E. coli	2001 - 2005	107
EAGLE CREEK	Marion, Boone	WEST FORK WHITE	E. coli	2001 - 2005	110
EEL RIVER	Clay, Greene	WEST FORK WHITE	E. coli	2001 - 2005	112
First Creek	Greene, Daviess, Martin	WEST FORK WHITE	E. coli	2001 - 2005	116
Indian Creek	Morgan	WEST FORK WHITE	E. coli	2001 - 2005	120
BROAD RIPPLE TRIBU-TARIES - Minnie Creek Tribs; Indianapolis Tribs	Marion	WEST FORK WHITE	E. coli	2001 - 2005	121
KESSINGER DITCH	Knox	WEST FORK WHITE	E. coli	2001 - 2005	124
LAMBS CREEK	Morgan	WEST FORK WHITE	E. coli	2001 - 2005	127
LICK CREEK	Greene, Owen	WEST FORK WHITE	E. coli	2001 - 2005	128
MILL CREEK	Hendricks	WEST FORK WHITE	E. coli	2001 - 2005	134
PIPE CREEK	Madison	WEST FORK WHITE	E. coli	2001 - 2005	136
PLUMMER CREEK	Greene	WEST FORK WHITE	E. coli	2001 - 2005	139
POQUES RUN	Marion	WEST FORK WHITE	E. coli	2001 - 2005	140
NORTH FORK PRAIRIE CREEK	Daviess	WEST FORK WHITE	E. coli	2001 - 2005	141
RICHLAND CREEK	Monroe, Owen	WEST FORK WHITE	E. coli	2001 - 2005	142
STATE DITCH	Marion	WEST FORK WHITE	E. coli	2001 - 2005	144
WABASH & ERIE CANAL	Clay	WEST FORK WHITE	E. coli	2001 - 2005	147
WHITE RIVER	Marion	WEST FORK WHITE	E. coli	2001 - 2005	148
WHITE RIVER	Marion	WEST FORK WHITE	Cyanide; E. coli	2001 - 2005	149
WHITE RIVER	Morgan, Monroe	WEST FORK WHITE	Cyanide; E. coli	2001 - 2005	152
WHITE RIVER - Pipe Cr to Cicero Cr	Hamilton	WEST FORK WHITE	E. coli	2001 - 2005	153

## Other Notices

WHITE RIVER	Marion, Johnson, Morgan	WEST FORK WHITE	Cyanide; E. coli	2001 - 2005	154
WHITE RIVER	Monroe, Owen, Greene	WEST FORK WHITE	Cyanide; E. coli	2001 - 2005	155
White River - Chesterfield to Indian Creek; White River - Perkinsville	Madison	WEST FORK WHITE	E. coli	2001 - 2005	157
WHITE RIVER	Delaware	WEST FORK WHITE	E. coli	2001 - 2005	158
Whitewater River, East Fork	Union	GREAT MIAMI	E. coli	2002 - 2004	90
BIG BLUE RIVER	Henry, Rush, Shelby, Johnson	EAST FORK WHITE	E. coli; Cyanide	2002 - 2004	164
East Fork Jackson Cr.	Monroe	EAST FORK WHITE	Impaired Biotic Communities	2002 - 2004	168
FLATROCK RIVER-GENEVA	Shelby	EAST FORK WHITE	E. coli	2002 - 2004	172
Jackson Cr.	Monroe	EAST FORK WHITE	E. coli	2002 - 2004	173
Jackson Cr.	Monroe	EAST FORK WHITE	Impaired Biotic Communities	2002 - 2004	173
SUGAR CREEK	Hancock	EAST FORK WHITE	E. coli	2002 - 2004	183
West Fork Clear Creek	Monroe	EAST FORK WHITE	Impaired Biotic Communities	2002 - 2004	185
DRIFTWOOD RIVER; GRASSY FORK-EAST GRASSY FORK; ROBERTS DITCH AND OTHER TRIBUTARIES; RAY CREEK TRIBUTARIES; BREWERS/CANARY DITCHES; HURRICANE CREEK (JOHNSON); BUCKHART CREEK TRIBUTARIES; AMITY DITCH TRIBUTARIES; HERRIOTTS CREEK TRIBUTARIES	Bartholomew/Johnson	EAST FORK WHITE	E. coli	2002 - 2004	348
MANILLA BRANCH; RAYS CROSSING TRIBUTARIES	Shelby	EAST FORK WHITE	E. coli	2002 - 2004	351
BEAVER CREEK	Lawrence/Martin	EAST FORK WHITE	Impaired Biotic Communities	2002 - 2004	369
UNNAMED TRIBUTARY OF JACKSON CREEK	Monroe	EAST FORK WHITE	E. coli	2002 - 2004	372
UNNAMED TRIBUTARY OF JACKSON CREEK	Monroe	EAST FORK WHITE	Impaired Biotic Communities	2002 - 2004	372
MIDDLE FORK SALT CREEK and Tribs; HAMILTON CREEK	Brown	EAST FORK WHITE	E. coli	2002 - 2004	373
FALL FORK CLIFTY CREEK-HEADWATERS; EAST TRIBUTARY FALL FORK CLIFTY CREEK; FALL FORK CLIFTY CREEK-ANDERSON FALLS; MIDDLE FORK FALL FORK CLIFTY CREEK; CLIFTY CREEK-NEWBERN; DUCK CREEK; CLIFTY CREEK-OTTER CREEK; SLOAN BRANCH CLIFTY CREEK; CLIFTY CREEK-COLUMBUS	Bartholomew/Decatur	EAST FORK WHITE	E. coli	2002 - 2004	376
MUSCATATUCK RIVER	Scott	EAST FORK WHITE	DO	2002 - 2004	379
Eel River - mainstem	Wabash, Miami	UPPER WABASH	Cyanide	2003 - 2005	68
Kokomo Creek - mainstem headwaters	Howard	UPPER WABASH	E. coli	2003 - 2005	72

## Other Notices

Little Wildcat Creek - mainstem	Howard	UPPER WABASH	E. coli	2003 - 2005	78
Mississinewa River	Randolph, Delaware, Grant	UPPER WABASH	E. coli	2003 - 2005	79
Prairie Creek Ditch - lower	Howard	UPPER WABASH	E. coli	2003 - 2005	83
South Fork Wildcat Creek - mainstem	Clinton	UPPER WABASH	Cyanide	2003 - 2005	84
TIPPECANOE RIVER	Fulton	UPPER WABASH	Cyanide	2003 - 2005	91
Wabash River	Huntington	UPPER WABASH	Cyanide	2003 - 2005	95
Wildcat Creek - mainstem	Howard, Carroll, Tippecanoe	UPPER WABASH	Cyanide; Lead; Nitrates; E. coli	2003 - 2005	97
HARRISON CREEK	Tippecanoe	UPPER WABASH	E. coli	2003 - 2005	299
Pipe Creek - upper	Grant	UPPER WABASH	Impaired Biotic Communities	2003 - 2005	303
Eightmile Creek - upper middle	Wells	UPPER WABASH	Impaired Biotic Communities	2003 - 2005	310
Wabash River - Threemile Creek	Adams, Wells	UPPER WABASH	E. coli	2003 - 2005	311
Wabash River - mainstem	Jay	UPPER WABASH	E. coli	2003 - 2005	313
Limberlost Creek and tributaries above tributary 2	Jay	UPPER WABASH	Impaired Biotic Communities	2003 - 2005	314
SALAMONIE RIVER - EAST CREEK; SALAMONIE RIVER - RHOTON DITCH	Wells, Blackford	UPPER WABASH	E. coli	2003 - 2005	315
Boots and Massey Creeks; Hummel Creek	Grant	UPPER WABASH	Impaired Biotic Communities	2003 - 2005	318
LAURAMIE CREEK	Tippecanoe	UPPER WABASH	E. coli	2003 - 2005	319
MIDDLE FORK WILDCAT CREEK - PETTIT	Tippecanoe	UPPER WABASH	E. coli	2003 - 2005	320
Unnamed tributary basin	Tippecanoe	UPPER WABASH	Impaired Biotic Communities	2003 - 2005	321
West Honey Creek	Howard	UPPER WABASH	E. coli	2003 - 2005	327
Kitty Run and other tributaries; Little Wildcat Creek - East Fork	Howard	UPPER WABASH	E. coli	2003 - 2005	328
Finn Ditch and other tributaries; Martin - Youngman Ditch basin	Howard	UPPER WABASH	E. coli	2003 - 2005	329
Cannon - Goyer Ditch	Howard	UPPER WABASH	E. coli	2003 - 2005	330
Turkey Creek; Mud Creek - Irwin Creek	Tipton	UPPER WABASH	E. coli	2003 - 2005	331
MUD CREEK - HEADWATERS (TIPTON)	Tipton	UPPER WABASH	E. coli	2003 - 2005	332
MUD CREEK - NORTH CREEK	Tipton	UPPER WABASH	E. coli	2003 - 2005	332
MUD CREEK - NORTH CREEK	Tipton	UPPER WABASH	Impaired Biotic Communities	2003 - 2005	332
GRASSY FORK DITCH - HARPER DITCH	Grant	UPPER WABASH	E. coli	2003 - 2005	333
Beaver Creek	Newton	UPPER ILLINOIS	Impaired Biotic Communities	2004 - 2006	50
CEDAR CREEK	Lake	UPPER ILLINOIS	Impaired Biotic Communities	2004 - 2006	51
COBB CREEK	Porter	UPPER ILLINOIS	Impaired Biotic Communities	2004 - 2006	53
Crooked Creek	LaPorte, Porter	UPPER ILLINOIS	Impaired Biotic Communities	2004 - 2006	54
Dyer Ditch	Lake	UPPER ILLINOIS	Impaired Biotic Communities	2004 - 2006	55
KANKAKEE RIVER-MAINSTEM	Lake, LaPorte	UPPER ILLINOIS	E. coli	2004 - 2006	57
KANKAKEE RIVER-MAINSTEM	Lake, LaPorte	UPPER ILLINOIS	Impaired Biotic Communities	2004 - 2006	57
Unnamed Ditch	St. Joseph	UPPER ILLINOIS	E. coli	2004 - 2006	59

## Other Notices

WABASH RIVER-GREATHOUSE CREEK (ILL)	Wells, Huntington, Wabash, Miami, Cass, Carroll, Tippecanoe, Vigo, Sullivan, Knox, Gibson, Posey	LOWER WABASH	Atrazine	2004 - 2006	93
Wabash River - Attica	Fountain, Vermillion	LOWER WABASH	Nutrients; pH; DO	2004 - 2006	94
BULL RUN BASIN	Lake	UPPER ILLINOIS	Impaired Biotic Communities	2004 - 2006	239
SINGLETON DITCH-BRUCE DITCH/BAILEY DITCH	Lake	UPPER ILLINOIS	Impaired Biotic Communities	2004 - 2006	241
SINGLETON DITCH-BRYANT DITCH	Lake	UPPER ILLINOIS	E. coli	2004 - 2006	242
COBB DITCH-SIEVERS CREEK	Porter	UPPER ILLINOIS	Impaired Biotic Communities	2004 - 2006	243
HODGE DITCH-DELEHANTY/SCHATZLEY DITCHES	Jasper	UPPER ILLINOIS	Impaired Biotic Communities	2004 - 2006	244
SALISBURY DITCH	LaPorte	UPPER ILLINOIS	Impaired Biotic Communities	2004 - 2006	245
KANKAKEE RIVER-LONG DITCH	LaPorte	UPPER ILLINOIS	E. coli	2004 - 2006	246
LITTLE KANKAKEE RIVER-BYRON	LaPorte	UPPER ILLINOIS	E. coli	2004 - 2006	247
LITTLE KANKAKEE RIVER-MILL CREEK-FISH LAKES	LaPorte	UPPER ILLINOIS	Impaired Biotic Communities	2004 - 2006	248
PINE CREEK-HORACE MILLER DITCH	LaPorte	UPPER ILLINOIS	E. coli	2004 - 2006	249
POTATO CREEK-KARTOFFEL CREEK	St. Joseph	UPPER ILLINOIS	E. coli	2004 - 2006	250
YELLOW RIVER - LISTENBERGER/CLIFFTON DITCHES to Yellow River - Knox	Starke/Marshall	UPPER ILLINOIS	E. coli	2004 - 2006	251
Meyers Ditch basin	Marshall	UPPER ILLINOIS	Impaired Biotic Communities	2004 - 2006	252
YELLOW RIVER - MILNER SELTENRIGHT DITCH	Marshall	UPPER ILLINOIS	E. coli	2004 - 2006	253
Elmer-Seltenright Ditch headwaters	Marshall	UPPER ILLINOIS	Impaired Biotic Communities	2004 - 2006	254
ARMEY DITCH - HEADWATERS; YELLOW RIVER - ARMEY DITCH - ALBERT ZEIGER DITCH; YELLOW RIVER - RIVERSIDE CHURCH	Marshall/Kosciusko	UPPER ILLINOIS	E. coli	2004 - 2006	255
STOCK DITCH - BUNCH BRANCHES	Marshall/St. Joseph	UPPER ILLINOIS	E. coli	2004 - 2006	256
ALDRICH DITCH - SCHANG DITCH	St. Joseph	UPPER ILLINOIS	Impaired Biotic Communities	2004 - 2006	256
SUGAR CREEK-EARL PARK	Benton	UPPER ILLINOIS	E. coli	2004 - 2006	290
Slough Creek; Slough Creek - Carpenter Creek (lower)	Jasper	UPPER ILLINOIS	E. coli	2004 - 2006	296
LITTLE RACCOON CREEK-MOORE LAKE/GUION	Parke	LOWER WABASH	Ammonia; pH; Total Dissolved Solids	2004 - 2006	334
VERMILLION RIVER-WHIPPOORWILL BRANCH	Vermillion	LOWER WABASH	Lead	2004 - 2006	335
Flint Creek - Flint Run	Tippecanoe	LOWER WABASH	Nutrients; DO; Habitat	2004 - 2006	339



## Other Notices

BUSSERON CREEK-ROB-BINS CREEK	Sullivan	LOWER WABASH	Ammonia; Nutrients	2004 - 2006	355
Kettle Creek	Sullivan	LOWER WABASH	DO	2004 - 2006	361
LITTLE CREEK-LOWER	Posey	LOWER WABASH	Nutrients; pH	2004 - 2006	412
Deep River - Burns Ditch	Lake	GREAT LAKES	Impaired Biotic Communities	2005 - 2007	5
Burns Ditch	Lake	GREAT LAKES	Impaired Biotic Communities	2005 - 2007	24
Mud Creek	Steuben	GREAT LAKES	Ammonia; DO	2005 - 2007	28
Orland Trib	Steuben	GREAT LAKES	DO	2005 - 2007	32
Pigeon Creek	Steuben	GREAT LAKES	E. coli	2005 - 2007	33
Blue Creek	Adams	GREAT LAKES	E. coli	2005 - 2007	40
Cedar Creek	Allen, Dekalb	GREAT LAKES	E. coli	2005 - 2007	41
GARRETT CITY DITCH	Dekalb	GREAT LAKES	E. coli; Total Dissolved Solids	2005 - 2007	42
HABEGGER DITCH	Adams	GREAT LAKES	E. coli	2005 - 2007	43
Maumee River	Allen	GREAT LAKES	E. coli	2005 - 2007	45
Cedarville Reservoir - lower	Allen	GREAT LAKES	E. coli	2005 - 2007	46
ST. MARYS RIVER	Allen	GREAT LAKES	E. coli	2005 - 2007	47
Swartz-Carnahan Ditch	Allen	GREAT LAKES	Impaired Biotic Communities; DO	2005 - 2007	48
Tiernan Ditch	Allen	GREAT LAKES	DO	2005 - 2007	49
FAWN RIVER-ORLAND	Steuben	GREAT LAKES	E. coli	2005 - 2007	220
Turkey Creek - Stump Ditch	Steuben	GREAT LAKES	E. coli	2005 - 2007	221
PIGEON CREEK	LaGrange	GREAT LAKES	E. coli	2005 - 2007	222
FLY CREEK-HEADWATERS (LAGRANGE)	LaGrange	GREAT LAKES	E. coli	2005 - 2007	223
PIGEON RIVER	LaGrange	GREAT LAKES	E. coli	2005 - 2007	224
EMMA CREEK TRIB	LaGrange	GREAT LAKES	Impaired Biotic Communities; Ammonia	2005 - 2007	225
LITTLE ELKHART RIVER	Elkhart and LaGrange	GREAT LAKES	Impaired Biotic Communities	2005 - 2007	236
WILLOW CREEK AND TRIB	Allen	GREAT LAKES	E. coli	2005 - 2007	257
DIEHL DITCH	Dekalb	GREAT LAKES	E. coli	2005 - 2007	258
LITTLE CEDAR CREEK	Dekalb	GREAT LAKES	E. coli	2005 - 2007	258
LITTLE CEDAR CREEK	Dekalb	GREAT LAKES	Impaired Biotic Communities	2005 - 2007	258
LITTLE CEDAR CREEK TRIB	Dekalb	GREAT LAKES	Impaired Biotic Communities	2005 - 2007	258
DOSCH DITCH	Dekalb	GREAT LAKES	Impaired Biotic Communities; Algae; Habitat	2005 - 2007	259
SWARTZ DITCH	Dekalb	GREAT LAKES	E. coli	2005 - 2007	260
ST. JOSEPH RIVER	Dekalb	GREAT LAKES	E. coli	2005 - 2007	261
METCALF DITCH AND TRIBS	Dekalb	GREAT LAKES	Impaired Biotic Communities	2005 - 2007	262
FISH CR TRIB/OUTLET OF BURDICK LK	Dekalb	GREAT LAKES	Impaired Biotic Communities	2005 - 2007	263
BLACK CREEK	Steuben	GREAT LAKES	Impaired Biotic Communities	2005 - 2007	264
West Branch Fish Creek and Tribs; Fish Creek and Tribs	Steuben/Dekalb	GREAT LAKES	E. coli	2005 - 2007	265
BULLERMAN DITCH AND OTHER TRIBUTARIES	Allen	GREAT LAKES	Impaired Biotic Communities	2005 - 2007	266
BOTTERN DITCH AND TRIBS	Allen	GREAT LAKES	Impaired Biotic Communities	2005 - 2007	267
BLACK CREEK (ALLEN)	Allen	GREAT LAKES	Impaired Biotic Communities; Nutrients; Algae	2005 - 2007	268
HAM INTERCEPTOR DITCH	Allen	GREAT LAKES	Impaired Biotic Communities; Nutrients	2005 - 2007	269
GROMEAUX DITCH	Allen	GREAT LAKES	Impaired Biotic Communities	2005 - 2007	270
FLATROCK CREEK-BROWN DITCH	Allen	GREAT LAKES	E. coli	2005 - 2007	271
FLATROCK CREEK-BROWN DITCH	Allen	GREAT LAKES	Impaired Biotic Communities; Nutrients	2005 - 2007	271

## Other Notices

LITTLE BLUE CREEK	Adams	GREAT LAKES	E. coli	2005 - 2007	272
GATES DITCH	Adams	GREAT LAKES	E. coli	2005 - 2007	273
ST. MARYS RIVER TRIB	Allen	GREAT LAKES	Impaired Biotic Communities	2005 - 2007	276
ST. MARYS RIVER	Adams	GREAT LAKES	E. coli	2005 - 2007	277
SPY RUN BASIN	Allen	GREAT LAKES	Impaired Biotic Communities	2005 - 2007	278
BIG OTTER LAKE	Steuben	GREAT LAKES	Impaired Biotic Communities	2005 - 2007	416
SEVEN SISTERS LAKES	Steuben	GREAT LAKES	Impaired Biotic Communities	2005 - 2007	417
MESERVE LAKE	Steuben	GREAT LAKES	Impaired Biotic Communities	2005 - 2007	420
LIME LAKE	Steuben	GREAT LAKES	Impaired Biotic Communities	2005 - 2007	421
LAKE OF THE WOODS	Steuben/LaGrange	GREAT LAKES	Impaired Biotic Communities	2005 - 2007	423
NORTH TWIN LAKE	LaGrange	GREAT LAKES	Impaired Biotic Communities	2005 - 2007	424
ROYER LAKE	LaGrange	GREAT LAKES	Impaired Biotic Communities	2005 - 2007	425
FISH LAKE	LaGrange	GREAT LAKES	Impaired Biotic Communities	2005 - 2007	426
MESSICK LAKE	LaGrange	GREAT LAKES	Impaired Biotic Communities	2005 - 2007	427
HACKENBURG LAKE	LaGrange	GREAT LAKES	Impaired Biotic Communities	2005 - 2007	428
DALLAS LAKE	LaGrange	GREAT LAKES	Impaired Biotic Communities	2005 - 2007	429
WITMER LAKE	LaGrange	GREAT LAKES	Impaired Biotic Communities	2005 - 2007	430
Bean Creek	Marion	WEST FORK WHITE	E. coli	2006 - 2008	99
DOLLAR HIDE CREEK	Marion	WEST FORK WHITE	E. coli	2006 - 2008	106
East Fork Fish Creek	Owen	WEST FORK WHITE	Impaired Biotic Communities	2006 - 2008	111
Fall Creek	Marion	WEST FORK WHITE	E. coli	2006 - 2008	115
Honey Creek	Johnson	WEST FORK WHITE	Impaired Biotic Communities	2006 - 2008	119
JACKS DEFEAT CREEK	Monroe	WEST FORK WHITE	Impaired Biotic Communities	2006 - 2008	122
JONES CREEK	Putnam	WEST FORK WHITE	Impaired Biotic Communities	2006 - 2008	123
KILLBUCK CREEK	Madison	WEST FORK WHITE	E. coli	2006 - 2008	125
LITTLE DEER CREEK	Putnam	WEST FORK WHITE	Impaired Biotic Communities	2006 - 2008	130
MAIDEN RUN	Putnam	WEST FORK WHITE	Impaired Biotic Communities	2006 - 2008	131
MCCORMICKS CREEK	Monroe, Owen	WEST FORK WHITE	Impaired Biotic Communities	2006 - 2008	133
PLEASANT RUN	Marion	WEST FORK WHITE	E. coli	2006 - 2008	137
PLUM CREEK	Putnam	WEST FORK WHITE	Impaired Biotic Communities	2006 - 2008	138
RICHLAND CREEK	Monroe, Owen	WEST FORK WHITE	Impaired Biotic Communities	2006 - 2008	142
RICHLAND CREEK	Monroe	WEST FORK WHITE	Impaired Biotic Communities	2006 - 2008	143
WHITE RIVER	Marion	WEST FORK WHITE	DO; Ammonia	2006 - 2008	148
WHITE RIVER	Marion	WEST FORK WHITE	DO	2006 - 2008	149
SOUTH FORK PATOKA RIVER	Pike	PATOKA RIVER	Impaired Biotic Communities	2006 - 2008	197
NORTH PRONG STOTTS CREEK-HEADWATERS	Morgan/Johnson	WEST FORK WHITE	Impaired Biotic Communities	2006 - 2008	347
RATTLESNAKE CREEK	Owen	WEST FORK WHITE	Impaired Biotic Communities	2006 - 2008	367
EAGLE CREEK RESERVOIR	Marion	WEST FORK WHITE	Nutrients; Taste; Algae	2006 - 2008	464
RESERVOIR NUMBER 29	Greene/Sullivan	WEST FORK WHITE	pH	2006 - 2008	472
ROUND LAKE	Greene/Sullivan	WEST FORK WHITE	pH	2006 - 2008	473
CLEAR CREEK	Monroe	EAST FORK WHITE	E. coli	2007 - 2009	166
LITTLE BLUE RIVER	Shelby	EAST FORK WHITE	E. coli	2007 - 2009	174
SUGAR CREEK-BROAD RIPPLE CAMP	Johnson	EAST FORK WHITE	E. coli	2007 - 2009	184
YOUNGS CREEK	Johnson	EAST FORK WHITE	E. coli	2007 - 2009	187
LITTLE SUGAR CREEK-CAMPBELL DITCH; Flat Branch	Johnson	EAST FORK WHITE	E. coli	2007 - 2009	349
BUCK CREEK and Tribs; GRASSY CREEK (MARION); WEST LITTLE SUGAR CREEK-BUCK CREEK	Hancock/Marion/ Shelby	EAST FORK WHITE	E. coli	2007 - 2009	350
FLATROCK RIVER	Bartholomew	EAST FORK WHITE	E. coli	2007 - 2009	352

**Other Notices**

LICK CREEK (SCOTT HOLLOW TO MOUTH); FRENCH LICK CREEK (SAND CREEK TO MOUTH); LOST RIVER-WEST BADEN; LOST RIVER (ABOVE SPRINGS VALLEY INTAKE)	Orange	EAST FORK WHITE	E. coli	2007 - 2009	368
MAY CREEK AND OTHER TRIBUTARIES; CLEAR CREEK-LITTLE CLEAR CREEK	Monroe	EAST FORK WHITE	E. coli	2007 - 2009	370
LITTLE SALT CREEK-KIPER CREEK; LITTLE SALT CREEK; SOUTH FORK SALT CREEK-BEE CREEK; SOUTH FORK SALT CREEK-TIPTON CREEK; SOUTH FORK SALT CREEK-NEGRO CREEK	Jackson	EAST FORK WHITE	E. coli	2007 - 2009	374
UNNAMED TRIBUTARY	Jackson	EAST FORK WHITE	Organics; DO; Chlorides	2007 - 2009	375
VERNON FORK-GUM LICK CREEK and Tribs; Mutton Creek-Sandy Branch and Tribs	Jennings/Jackson	EAST FORK WHITE	E. coli	2007 - 2009	377
Muscatatuck River-Big Creek and Tribs	Jefferson/Jennings/Scott/Jackson	EAST FORK WHITE	E. coli	2007 - 2009	378
MONROE RESERVOIR (UPPER)	Monroe	EAST FORK WHITE	Taste; Algae	2007 - 2009	470
JOHN HAYS LAKE	Washington	EAST FORK WHITE	Taste; Algae	2007 - 2009	477
Eel River - mainstem	Whitley, Miami	UPPER WABASH	E. coli	2008 - 2010	67
Eel River - mainstem	Wabash	UPPER WABASH	E. coli	2008 - 2010	70
Lake Manitou	Fulton	UPPER WABASH	DO; Organic Enrichment	2008 - 2010	74
Tippecanoe River and tributary	Marshall, Kosciusko	UPPER WABASH	E. coli	2008 - 2010	92
Wildcat Creek - mainstem	Howard, Carroll, Tippecanoe	UPPER WABASH	E. coli	2008 - 2010	97
Wildcat - mainstem	Howard, Carroll, Tippecanoe	UPPER WABASH	E. coli	2008 - 2010	97
WILDCAT CREEK - JEROME	Howard, Carroll, Tippecanoe	UPPER WABASH	E. coli	2008 - 2010	97
MUD BRANCH	Cass	UPPER WABASH	E. coli	2008 - 2010	279
EEL RIVER - WASHONIS CREEK	Miami	UPPER WABASH	E. coli	2008 - 2010	280
SQUIRREL CREEK (LOWER)	Miami	UPPER WABASH	E. coli	2008 - 2010	281
Solon Ditch and other tributaries; Swank Ditch	Whitley, Kosciusko, Wabash	UPPER WABASH	E. coli	2008 - 2010	283
TIPPECANOE RIVER - WILSON/ COLLINS DITCHES	Fulton	UPPER WABASH	E. coli	2008 - 2010	287
MUD CREEK - SMITH DITCH; MUD CREEK - NEFF/ BAKER DITCHES	Fulton	UPPER WABASH	Impaired Biotic Communities	2008 - 2010	288
TIPPECANOE RIVER - MCMAHAN DT	Fulton	UPPER WABASH	E. coli	2008 - 2010	289
Munson Ditch and next tributary D/S on left bank; Deer Creek U/S of Brown Ditch	Cass	UPPER WABASH	E. coli	2008 - 2010	301
GRANTS RUN	Cass	UPPER WABASH	E. coli	2008 - 2010	302

## Other Notices

Pipe Creek - mainstem	Miami, Cass	UPPER WABASH	E. coli	2008 - 2010	304
Unnamed tributaries	Miami	UPPER WABASH	E. coli	2008 - 2010	305
Silver Creek basin	Wabash, Huntington	UPPER WABASH	Copper; E. coli	2008 - 2010	307
Little River - Mud Creek	Huntington	UPPER WABASH	E. coli	2008 - 2010	308
Mud Creek	Huntington	UPPER WABASH	E. coli	2008 - 2010	309
SALAMONIE RIVER-LAN-CASTER	Huntington	UPPER WABASH	E. coli	2008 - 2010	317
Heavilon Ditch - headwater	Clinton	UPPER WABASH	Ammonia; DO; Organic Enrichment	2008 - 2010	322
SECHRIST LAKE	Kosciusko	UPPER WABASH	Impaired Biotic Communities	2008 - 2010	438
OSWEGO LAKE	Kosciusko	UPPER WABASH	Impaired Biotic Communities	2008 - 2010	440
JAMES LAKE	Kosciusko	UPPER WABASH	Impaired Biotic Communities	2008 - 2010	441
SHRINER LAKE	Whitley	UPPER WABASH	Impaired Biotic Communities	2008 - 2010	457
LITTLE CALUMET RIVER	Lake	UPPER ILLINOIS	Impaired Biotic Communities	2009 - 2011	23
BREYFOGEL DITCH	Porter	UPPER ILLINOIS	Impaired Biotic Communities	2009 - 2011	53
IROQUOIS RIVER	Jasper, Newton	UPPER ILLINOIS	E. coli	2009 - 2011	56
Big Pine Creek; Big Pine Creek - Brown Dt to Pine Village	Warren	LOWER WABASH	E. coli	2009 - 2011	60
BIG RACCOON CREEK-NEW ROSS	Putnam	LOWER WABASH	E. coli	2009 - 2011	61
BIG RACCOON CREEK	Putnam	LOWER WABASH	Impaired Biotic Communities	2009 - 2011	61
BIG RACCOON CREEK-NEW ROSS	Putnam	LOWER WABASH	Impaired Biotic Communities	2009 - 2011	61
Cornstalk Creek	Putnam	LOWER WABASH	Impaired Biotic Communities	2009 - 2011	64
ELLIOT DITCH	Tippecanoe	LOWER WABASH	Impaired Biotic Communities	2009 - 2011	71
NORTH RAMP CREEK	Putnam	LOWER WABASH	Impaired Biotic Communities	2009 - 2011	80
Otter Creek	Vigo	LOWER WABASH	E. coli	2009 - 2011	81
South Ramp Creek	Putnam	LOWER WABASH	Impaired Biotic Communities	2009 - 2011	85
Sugar Creek	Vigo	LOWER WABASH	Impaired Biotic Communities	2009 - 2011	86
SUGAR CREEK	Montgomery	LOWER WABASH	E. coli	2009 - 2011	87
Wabash River - D/S Wea Creek	Wells, Huntington, Wabash, Miami, Cass, Carroll, Tippecanoe, Vigo, Sullivan, Knox, Gibson, Posey	LOWER WABASH	E. coli	2009 - 2011	93
Wabash River - Wabash Gen Sta to Lost Creek	Wells, Huntington, Wabash, Miami, Cass, Carroll, Tippecanoe, Vigo, Sullivan, Knox, Gibson, Posey	LOWER WABASH	Thermal	2009 - 2011	93
Wabash River - Cayuga Gen Sta to Mill Cr	Fountain, Vermillion	LOWER WABASH	Thermal	2009 - 2011	94
Wea Creek - Elliot Dt to mouth	Tippecanoe	LOWER WABASH	E. coli	2009 - 2011	96
East Branch Stony Run	Lake	UPPER ILLINOIS	Nutrients; Total Dissolved Solids; Chlorides	2009 - 2011	240
MONTGOMERY DITCH-MORRISON DITCH NO. 2 DITCH	Newton	UPPER ILLINOIS	Nutrients; DO	2009 - 2011	291
THOMPSON DITCH-HAMBRIDGE DITCH	Newton	UPPER ILLINOIS	Impaired Biotic Communities	2009 - 2011	292
THOMPSON DITCH-CLARK DITCH	Newton	UPPER ILLINOIS	Impaired Biotic Communities; Nutrients; DO; Habitat	2009 - 2011	293
MOSQUITO CREEK-SIMONIN DITCH	Newton/Jasper	UPPER ILLINOIS	DO	2009 - 2011	294
CURTIS CREEK-YEOMAN DITCH	Jasper	UPPER ILLINOIS	Nutrients; DO; Total Dissolved Solids; Chlorides	2009 - 2011	295
Ringeisen Ditch basin	Jasper	UPPER ILLINOIS	Impaired Biotic Communities	2009 - 2011	297

## Other Notices

ROWAN DITCH TRIBUTARY	Jasper	UPPER ILLINOIS	Nutrients; DO	2009 - 2011	298
VERMILLION RIVER-WHIPPOORWILL BRANCH	Vermillion	LOWER WABASH	E. coli	2009 - 2011	335
COAL CREEK-STONE BLUFF; Coal Creek - Dry Run; Coal Creek - Copper Chapel	Fountain	LOWER WABASH	E. coli	2009 - 2011	336
SHAWNEE CREEK-KELLDT/LITTLE SHAWNEE CREEK	Fountain	LOWER WABASH	E. coli	2009 - 2011	337
SUGAR CREEK-DAVIS/BARNES DITCH	Clinton/Boone	LOWER WABASH	E. coli	2009 - 2011	346
North Branch Otter Creek - Diamond Cr to mouth	Vigo	LOWER WABASH	Zinc	2009 - 2011	366
Carpenter Creek tributary	Jasper	UPPER ILLINOIS	Impaired Biotic Communities; Nutrients; DO	2009 - 2011	415
LAWRENCE LAKE	Marshall	UPPER ILLINOIS	Impaired Biotic Communities	2009 - 2011	435
MYERS LAKE	Marshall	UPPER ILLINOIS	Impaired Biotic Communities	2009 - 2011	436
TURTLE CREEK RESERVOIR	Sullivan	LOWER WABASH	Thermal	2009 - 2011	466
LITTLE KANKAKEE RIVER-MILL CREEK-FISH LAKES	LaPorte	UPPER ILLINOIS	Impaired Biotic Communities	2009 - 2011	485
BLUE RIVER	Harrison	OHIO TRIBUTARIES	E. coli	2010 - 2012	199
BLUE RIVER	Harrison	OHIO TRIBUTARIES	E. coli	2010 - 2012	199
BLUE RIVER	Harrison	OHIO TRIBUTARIES	Impaired Biotic Communities	2010 - 2012	199
CYPRESS CREEK	Warrick	OHIO TRIBUTARIES	Chlordane	2010 - 2012	200
CYPRESS CREEK	Warrick	OHIO TRIBUTARIES	Chlordane; Sulfates; Total Dissolved Solids; E. coli	2010 - 2012	200
CYPRESS CREEK	Warrick	OHIO TRIBUTARIES	Chlordane; Total Dissolved Solids; E. coli	2010 - 2012	200
LITTLE PIGEON CREEK	Spencer	OHIO TRIBUTARIES	Ammonia; Total Dissolved Solids	2010 - 2012	202
LITTLE PIGEON CREEK	Spencer	OHIO TRIBUTARIES	DO; Ammonia	2010 - 2012	202
LITTLE PIGEON CREEK	Spencer	OHIO TRIBUTARIES	E. coli	2010 - 2012	202
LITTLE PIGEON CREEK	Spencer	OHIO TRIBUTARIES	Impaired Biotic Communities; Sulfates; Total Dissolved Solids	2010 - 2012	202
LITTLE PIGEON CREEK	Spencer	OHIO TRIBUTARIES	Sulfates; Total Dissolved Solids	2010 - 2012	202
Ohio River	Clark, Floyd	OHIO RIVER	E. coli	2010 - 2012	203
Ohio River	Vanderburgh	OHIO RIVER	E. coli	2010 - 2012	204
OHIO RIVER - McAlpine to Greenwood, KY	Dearborn, Ohio, Switzerland, Jefferson, Clark, Floyd, Harrison, Crawford, Perry, Spencer, Warrick, Vanderburgh, Posey	OHIO RIVER	E. coli	2010 - 2012	205
PIGEON CREEK-HARPER DITCH	Vanderburgh	OHIO TRIBUTARIES	DO	2010 - 2012	206
PIGEON CREEK-KLEYMEYER PARK	Vanderburgh	OHIO TRIBUTARIES	E. coli	2010 - 2012	206
LOG LICK CREEK-TWO LICK CREEK	Switzerland	OHIO TRIBUTARIES	E. coli	2010 - 2012	380
SOUTH FORK LAUGHERY CREEK-LOWER	Ohio	OHIO TRIBUTARIES	E. coli	2010 - 2012	381
SOUTH HOGAN CREEK; Whitaker Creek	Dearborn	OHIO TRIBUTARIES	E. coli	2010 - 2012	382
SOUTH HOGAN CREEK; Whitaker Creek	Dearborn	OHIO TRIBUTARIES	Impaired Biotic Communities	2010 - 2012	382
LAUGHERY CREEK	Ripley	OHIO TRIBUTARIES	E. coli	2010 - 2012	383
TANNERS CREEK	Dearborn	OHIO TRIBUTARIES	Impaired Biotic Communities	2010 - 2012	384

## Other Notices

INDIAN KENTUCK CREEK	Jefferson	OHIO TRIBUTARIES	Impaired Biotic Communities	2010 - 2012	385
WEST FORK INDIAN KENTUCK-HEADWATERS	Jefferson/Ripley	OHIO TRIBUTARIES	Impaired Biotic Communities	2010 - 2012	386
FOURTEEN MILE CREEK-DRY BRANCH; Yankee Creek	Clark	OHIO TRIBUTARIES	E. coli	2010 - 2012	387
OWEN CREEK	Clark	OHIO TRIBUTARIES	E. coli	2010 - 2012	388
OWEN CREEK	Clark	OHIO TRIBUTARIES	Impaired Biotic Communities; Ammonia; DO	2010 - 2012	388
SILVER CREEK TRIB	Clark	OHIO TRIBUTARIES	Impaired Biotic Communities; DO	2010 - 2012	389
BIG POISON CREEK	Perry	OHIO TRIBUTARIES	DO	2010 - 2012	390
LITTLE OIL CREEK	Perry	OHIO TRIBUTARIES	DO	2010 - 2012	391
LITTLE OIL CREEK	Perry	OHIO TRIBUTARIES	E. coli	2010 - 2012	391
OIL CREEK-WEBB BRANCH	Perry	OHIO TRIBUTARIES	Impaired Biotic Communities	2010 - 2012	392
BOGARD CREEK	Crawford	OHIO TRIBUTARIES	Impaired Biotic Communities	2010 - 2012	393
OTTER CREEK TRIB	Crawford	OHIO TRIBUTARIES	Impaired Biotic Communities	2010 - 2012	394
LITTLE BLUE RIVER	Crawford	OHIO TRIBUTARIES	Impaired Biotic Communities; Sulfates; Total Dissolved Solids	2010 - 2012	395
LITTLE BLUE RIVER-GRANTSBURG	Crawford	OHIO TRIBUTARIES	E. coli	2010 - 2012	396
BUCK CREEK-MAIN STEM	Harrison	OHIO TRIBUTARIES	E. coli	2010 - 2012	397
BUCK CREEK-MAIN STEM	Harrison	OHIO TRIBUTARIES	Impaired Biotic Communities	2010 - 2012	397
INDIAN CREEK-DEVILS BACKBONE	Harrison	OHIO TRIBUTARIES	DO	2010 - 2012	398
INDIAN CREEK-DEVILS BACKBONE	Harrison	OHIO TRIBUTARIES	E. coli	2010 - 2012	398
Indian Creek; INDIAN CREEK-CRANDALL BRANCH	Harrison	OHIO TRIBUTARIES	E. coli	2010 - 2012	399
SOUTH FORK BLUE RIVER	Washington	OHIO TRIBUTARIES	Impaired Biotic Communities	2010 - 2012	400
LITTLE INDIAN CREEK (NORTH)	Floyd/Clark	OHIO TRIBUTARIES	Impaired Biotic Communities	2010 - 2012	401
OTTER CREEK (LOWER)	Warrick	OHIO TRIBUTARIES	Sulfates; Total Dissolved Solids	2010 - 2012	402
N. F. LITTLE PIGEON CR AND TRIB	Dubois	OHIO TRIBUTARIES	Impaired Biotic Communities	2010 - 2012	403
LITTLE SANDY CREEK	Spencer	OHIO TRIBUTARIES	Impaired Biotic Communities; Sulfates; DO; Total Dissolved Solids	2010 - 2012	404
CROOKED CREEK-LIBERAL; CROOKED CREEK-CEDAR CREST LAKE	Spencer	OHIO TRIBUTARIES	DO; E. coli	2010 - 2012	405
ANDERSON RIVER AND TRIBS	Spencer/Perry	OHIO TRIBUTARIES	E. coli	2010 - 2012	406
ANDERSON RIVER AND TRIBS	Spencer/Perry	OHIO TRIBUTARIES	Impaired Biotic Communities; DO	2010 - 2012	406
ROCKHOUSE BRANCH	Perry	OHIO TRIBUTARIES	Impaired Biotic Communities	2010 - 2012	407
MIDDLE FORK ANDERSON R	Perry	OHIO TRIBUTARIES	DO	2010 - 2012	408
MIDDLE FORK ANDERSON R	Perry	OHIO TRIBUTARIES	E. coli	2010 - 2012	408
DEER CREEK-MAIN STEM	Perry	OHIO TRIBUTARIES	DO	2010 - 2012	409
SQUAW CREEK	Warrick	OHIO TRIBUTARIES	Sulfates; Total Dissolved Solids	2010 - 2012	410
SMITH FORK	Gibson	OHIO TRIBUTARIES	Impaired Biotic Communities; Sulfates; Total Dissolved Solids	2010 - 2012	411
LAKE SALINDIA	Washington	OHIO TRIBUTARIES	Taste; Algae	2010 - 2012	476
HOLLAND LAKE 1	Dubois	OHIO TRIBUTARIES	Taste; Algae	2010 - 2012	479

## Other Notices

HOLLAND LAKE 2	Dubois	OHIO TRIBUTARIES	Taste; Algae	2010 - 2012	480
Bean Creek	Marion	WEST FORK WHITE	Impaired Biotic Communities	2011 - 2013	99
Buck Creek	Delaware	WEST FORK WHITE	Impaired Biotic Communities	2011 - 2013	102
DOLLAR HIDE CREEK	Marion	WEST FORK WHITE	Impaired Biotic Communities	2011 - 2013	106
EAST FORK WHITE LICK CREEK	Marion, Hendricks	WEST FORK WHITE	Impaired Biotic Communities	2011 - 2013	108
EAGLE CREEK-DAM TO LITTLE EAGLE CREEK	Marion, Boone	WEST FORK WHITE	Impaired Biotic Communities	2011 - 2013	110
Hawkins Creek	Daviess	WEST FORK WHITE	Impaired Biotic Communities	2011 - 2013	118
KILLBUCK CREEK	Madison	WEST FORK WHITE	Impaired Biotic Communities	2011 - 2013	125
Little Cicero Creek	Hamilton	WEST FORK WHITE	Impaired Biotic Communities	2011 - 2013	129
PIPE CREEK	Madison	WEST FORK WHITE	Impaired Biotic Communities	2011 - 2013	136
PLEASANT RUN	Marion	WEST FORK WHITE	Impaired Biotic Communities	2011 - 2013	137
POQUES RUN	Marion	WEST FORK WHITE	Impaired Biotic Communities	2011 - 2013	140
STATE DITCH	Marion	WEST FORK WHITE	Impaired Biotic Communities	2011 - 2013	144
Whitewater River, East Fork	Union	GREAT MIAMI	FCA for Hg	2012 - 2014	90
BIG BLUE RIVER	Henry, Rush, Shelby, Johnson	EAST FORK WHITE	FCA for PCB	2012 - 2014	164
BRANDYWINE CREEK	Hancock	EAST FORK WHITE	FCA for Hg	2012 - 2014	165
Dogwood Lake	Daviess	EAST FORK WHITE	FCA for Hg	2012 - 2014	167
EAST FORK WHITE R-REDDINGTON	Jackson, Lawrence	EAST FORK WHITE	FCA for PCB & Hg	2012 - 2014	169
EAST FORK WHITE R-COLUMBUS	Bartholomew, Martin	EAST FORK WHITE	FCA for PCB	2012 - 2014	170
FLATROCK RIVER-APPLEBUTTER CREEK	Rush	EAST FORK WHITE	FCA for Hg	2012 - 2014	171
FLATROCK RIVER-ST. OMER	Shelby	EAST FORK WHITE	FCA for PCB & Hg	2012 - 2014	172
FLATROCK RIVER-GENEVA	Shelby	EAST FORK WHITE	FCA for PCB & Hg	2012 - 2014	172
LITTLE BLUE RIVER	Shelby	EAST FORK WHITE	FCA for PCB	2012 - 2014	174
LITTLE SUGAR CREEK	Hancock	EAST FORK WHITE	FCA for PCB & Hg	2012 - 2014	175
LAKE MONROE (LOWER)	Monroe	EAST FORK WHITE	FCA for Hg	2012 - 2014	176
MUDDY FORK SAND CREEK	Decatur	EAST FORK WHITE	FCA for PCB & Hg	2012 - 2014	177
MUSCATATUCK RIVER	Washington	EAST FORK WHITE	FCA for PCB & Hg	2012 - 2014	178
PLEASANT RUN TRIBUTARIES	Lawrence	EAST FORK WHITE	FCA for PCB	2012 - 2014	179
Salt Creek; MIDDLE FORK SALT CREEK	Lawrence	EAST FORK WHITE	FCA for PCB & Hg	2012 - 2014	180
SAND CREEK	Decatur	EAST FORK WHITE	FCA for PCB & Hg	2012 - 2014	181
SAND CREEK	Jennings	EAST FORK WHITE	FCA for Hg	2012 - 2014	182
SUGAR CREEK	Hancock	EAST FORK WHITE	FCA for Hg	2012 - 2014	183
SUGAR CREEK-SUGAR CREEK (TOWN)	Johnson	EAST FORK WHITE	FCA for PCB	2012 - 2014	184
SUGAR CREEK-BROAD RIPPLE CAMP	Johnson	EAST FORK WHITE	FCA for PCB	2012 - 2014	184
YELLOWWOOD LAKE	Brown	EAST FORK WHITE	FCA for Hg	2012 - 2014	186
GRASSY CREEK	Johnson	EAST FORK WHITE	FCA for PCB	2012 - 2014	187
YOUNGS CREEK	Johnson	EAST FORK WHITE	FCA for PCB	2012 - 2014	187
BROOKVILLE RESERVOIR	Franklin	GREAT MIAMI	FCA for Hg	2012 - 2014	189
EAST FORK WHITE-WATER RIVER	Wayne	GREAT MIAMI	FCA for PCB	2012 - 2014	190
GREAT MIAMI RIVER	Dearborn	GREAT MIAMI	FCA for PCB & Hg	2012 - 2014	191
WHITWATER RIVER - West Fork	Fayette	GREAT MIAMI	FCA for PCB & Hg	2012 - 2014	192
Whitewater River - mainstem	Dearborn	GREAT MIAMI	FCA for PCB & Hg	2012 - 2014	193

## Other Notices

Middle Fork Reservoir	Wayne	GREAT MIAMI	FCA for Hg	2012 - 2014	194
Whitewater River, East Fork	Union	GREAT MIAMI	FCA for Hg	2012 - 2014	353
Whitewater River, WF; Whitewater River - Milton	Randolph and Wayne	GREAT MIAMI	FCA for Hg	2012 - 2014	354
MONROE RESERVOIR (UPPER)	Monroe	EAST FORK WHITE	FCA for Hg	2012 - 2014	470
YELLOWWOOD LAKE	Brown	EAST FORK WHITE	FCA for Hg	2012 - 2014	471
STARVE HOLLOW LAKE	Jackson	EAST FORK WHITE	FCA for Hg	2012 - 2014	475
DOGWOOD LAKE	Daviess	EAST FORK WHITE	FCA for Hg	2012 - 2014	478
Crooked Lake	Noble, Whitley	UPPER WABASH	FCA for PCB & Hg	2013 - 2015	4
Center Lake	Kosciusko	UPPER WABASH	FCA for PCB	2013 - 2015	63
Deer Creek; Deer Creek D/S of Brown Ditch	Carroll	UPPER WABASH	FCA for PCB & Hg	2013 - 2015	65
Eel River - mainstem	Whitley, Miami	UPPER WABASH	FCA for PCB & Hg	2013 - 2015	67
Eel River - mainstem	Whitley, Miami	UPPER WABASH	FCA for PCB & Hg	2013 - 2015	67
Eel River - mainstem	Wabash, Miami	UPPER WABASH	FCA for PCB	2013 - 2015	68
Eel River - mainstem	Cass	UPPER WABASH	FCA for Hg	2013 - 2015	69
Eel River - mainstem	Wabash	UPPER WABASH	FCA for PCB	2013 - 2015	70
Eel River - mainstem	Wabash	UPPER WABASH	FCA for PCB	2013 - 2015	70
Kokomo Creek - mainstem headwaters	Howard	UPPER WABASH	FCA for PCB	2013 - 2015	72
Kokomo Reservoir No 2	Howard	UPPER WABASH	FCA for Hg	2013 - 2015	73
Lake Manitou	Fulton	UPPER WABASH	FCA for Hg	2013 - 2015	74
Little Mississinewa River mainstem	Randolph	UPPER WABASH	FCA for PCB	2013 - 2015	76
Mississinewa River - mainstem above Ltl Mississinewa R	Randolph, Delaware, Grant	UPPER WABASH	FCA for PCB	2013 - 2015	79
Mississinewa River - mainstem	Randolph, Delaware, Grant	UPPER WABASH	FCA for PCB & Hg	2013 - 2015	79
Mississinewa River	Randolph, Delaware, Grant	UPPER WABASH	FCA for PCB & Hg; Lead	2013 - 2015	79
Pike Lake	Kosciusko	UPPER WABASH	FCA for Hg	2013 - 2015	82
South Fork Wildcat Creek - mainstem	Clinton	UPPER WABASH	Cyanide; E. coli	2013 - 2015	84
South Fork Wildcat Creek - mainstem	Clinton	UPPER WABASH	E. coli	2013 - 2015	84
Tippecanoe Lake	Kosciusko	UPPER WABASH	FCA for Hg	2013 - 2015	90
Tippecanoe River - mainstem	Marshall, Kuciusko	UPPER WABASH	FCA for Hg	2013 - 2015	92
Tippecanoe River and tributary	Marshall, Kuciusko	UPPER WABASH	FCA for Hg	2013 - 2015	92
Tippecanoe River	Kosciusko, Fulton, Pulaski	UPPER WABASH	FCA for PCB & Hg	2013 - 2015	92
Tippecanoe River - mainstem	Marshall, Kuciusko	UPPER WABASH	FCA for PCB & Hg	2013 - 2015	92
Tippecanoe River - mainstem	Kosciusko, Fulton, Pulaski	UPPER WABASH	FCA for PCB	2013 - 2015	92
Wabash River mainstem	Wells, Huntington, Wabash, Miami, Cass, Carroll, Tippecanoe, Vigo, Sullivan, Knox, Gib- son, Posey	UPPER WABASH	FCA for PCB & Hg	2013 - 2015	93
Wabash River mainstem	Wells, Huntington, Wabash, Miami, Cass, Carroll, Tippecanoe, Vigo, Sullivan, Knox, Gib- son, Posey	UPPER WABASH	E. coli	2013 - 2015	93



## Other Notices

Wabash River mainstem	Wells, Huntington, Wabash, Miami, Cass, Carroll, Tippecanoe, Vigo, Sullivan, Knox, Gibson, Posey	UPPER WABASH	FCA for PCB & Hg; Copper; Lead	2013 - 2015	93
Wabash River mainstem	Wells, Huntington, Wabash, Miami, Cass, Carroll, Tippecanoe, Vigo, Sullivan, Knox, Gibson, Posey	UPPER WABASH	FCA for PCB & Hg; Lead	2013 - 2015	93
Wabash River mainstem	Wells, Huntington, Wabash, Miami, Cass, Carroll, Tippecanoe, Vigo, Sullivan, Knox, Gibson, Posey	UPPER WABASH	E. coli	2013 - 2015	93
Wildcat Creek - upstream of water intake	Howard, Carroll, Tippecanoe	UPPER WABASH	Cyanide; Lead	2013 - 2015	97
Wildcat - mainstem	Howard, Carroll, Tippecanoe	UPPER WABASH	FCA for PCB	2013 - 2015	97
Wildcat Creek - mainstem	Howard, Carroll, Tippecanoe	UPPER WABASH	FCA for PCB	2013 - 2015	97
Wildcat Creek - mainstem	Howard, Carroll, Tippecanoe	UPPER WABASH	FCA for PCB; Cyanide; Lead; Organics	2013 - 2015	97
Winona Lake	Kosciusko	UPPER WABASH	FCA for PCB	2013 - 2015	98
BOLLEY DITCH - LUKENS LAKE; Squirrel Creek - Berger Ditch	Miami	UPPER WABASH	Impaired Biotic Communities	2013 - 2015	282
Harp Ditch and other tributaries; Big Monon Ditch - outlet	White, Pulaski	UPPER WABASH	E. coli	2013 - 2015	284
TIPPECANOE RIVER - AGNEW DITCH - MOSS DITCH	Pulaski	UPPER WABASH	E. coli	2013 - 2015	285
TIPPECANOE RIVER - BARTEE/ TAYLOR DITCHES	Starke, Pulaski	UPPER WABASH	E. coli	2013 - 2015	286
PLEASANT RUN/ TANNERY BRANCH	Carroll	UPPER WABASH	E. coli	2013 - 2015	300
Mill Creek basin	Wabash	UPPER WABASH	Impaired Biotic Communities	2013 - 2015	306
Mud Creek	Huntington	UPPER WABASH	Impaired Biotic Communities	2013 - 2015	309
Wabash River - mainstem	Adams	UPPER WABASH	Impaired Biotic Communities; Total Dissolved Solids; Chlorides	2013 - 2015	312
MAJENCIA CREEK - HEADWATERS	Huntington	UPPER WABASH	Impaired Biotic Communities; Nutrients	2013 - 2015	316
Heavilon Ditch - headwater	Clinton	UPPER WABASH	E. coli	2013 - 2015	322
Unnamed tributary basin	Clinton	UPPER WABASH	Impaired Biotic Communities	2013 - 2015	323
KILMORE CREEK - BOYLES DITCH	Clinton	UPPER WABASH	E. coli	2013 - 2015	324
Campbells Run - mainstem	Clinton	UPPER WABASH	E. coli	2013 - 2015	325
Wildcat Creek, Middle Fork - mainstem	Carroll	UPPER WABASH	E. coli	2013 - 2015	326
LITTLE BARBEE LAKE	Kosciusko	UPPER WABASH	FCA for Hg	2013 - 2015	439
PALESTINE LAKE	Kosciusko	UPPER WABASH	FCA for PCB & Hg	2013 - 2015	442
WEBSTER LAKE	Kosciusko	UPPER WABASH	FCA for Hg	2013 - 2015	443
LOON LAKE	Whitley	UPPER WABASH	FCA for Hg	2013 - 2015	456
BLUE LAKE	Whitley	UPPER WABASH	FCA for Hg	2013 - 2015	458
Lake Freeman	White	UPPER WABASH	E. coli	2013 - 2015	459

## Other Notices

LAKE SHAFER	White	UPPER WABASH	FCA for PCB	2013 - 2015	460
J. EDWARD ROUSH LAKE	Huntington	UPPER WABASH	FCA for Hg	2013 - 2015	461
SALAMONIE RESERVOIR	Wabash	UPPER WABASH	FCA for Hg	2013 - 2015	462
MISSISSINEWA RESERVOIR	Miami	UPPER WABASH	FCA for PCB	2013 - 2015	463
KUNKEL LAKE	Wells	UPPER WABASH	FCA for Hg	2013 - 2015	482
HOMINY RIDGE LAKE	Wabash	UPPER WABASH	FCA for Hg	2013 - 2015	483
LITTLE CALUMET RIVER	Lake	UPPER ILLINOIS	FCA for PCB & Hg	2014 - 2016	23
CEDAR LAKE; Cedar Creek	Lake	UPPER ILLINOIS	FCA for PCB	2014 - 2016	52
COBB CREEK	Porter	UPPER ILLINOIS	Lead	2014 - 2016	53
IROQUOIS RIVER	Jasper, Newton	UPPER ILLINOIS	FCA for PCB	2014 - 2016	56
KANKAKEE RIVER-MAINSTEM	Jasper, Newton	UPPER ILLINOIS	FCA for PCB	2014 - 2016	56
KANKAKEE RIVER-MAINSTEM	Lake, LaPorte	UPPER ILLINOIS	FCA for PCB & Hg	2014 - 2016	57
KANKAKEE RIVER	LaPorte/Starke	UPPER ILLINOIS	FCA for PCB & Hg	2014 - 2016	57
Big Pine Creek; Big Pine Creek - Brown Dt to Pine Village	Warren	LOWER WABASH	FCA for PCB & Hg; Lead	2014 - 2016	60
BIG RACCOON CREEK	Parke	LOWER WABASH	FCA for PCB & Hg	2014 - 2016	62
Dugger Lake	Sullivan	LOWER WABASH	FCA for PCB	2014 - 2016	66
ELLIOT DITCH	Tippecanoe	LOWER WABASH	FCA for PCB; PAH	2014 - 2016	71
Lake Maxinkuckee	Marshall	UPPER ILLINOIS	FCA for Hg	2014 - 2016	75
Little Sugar Creek	Montgomery	LOWER WABASH	FCA for PCB & Hg	2014 - 2016	77
OTTER CREEK	Vigo	LOWER WABASH	FCA for PCB & Hg	2014 - 2016	81
Otter Creek	Vigo	LOWER WABASH	FCA for PCB & Hg	2014 - 2016	81
Otter Creek	Vigo	LOWER WABASH	Impaired Biotic Communities; Sulfates; pH; Total Dissolved Solids	2014 - 2016	81
SUGAR CREEK	Montgomery	LOWER WABASH	FCA for PCB & Hg	2014 - 2016	87
SUGAR CREEK	Montgomery	LOWER WABASH	FCA for PCB & Hg	2014 - 2016	87
SUGAR CREEK	Parke	LOWER WABASH	FCA for PCB	2014 - 2016	88
SULPHER CREEK	Sullivan	LOWER WABASH	Impaired Biotic Communities; Metals; Sulfates; pH; DO; Total Dissolved Solids	2014 - 2016	89
Wabash River - Wabash Gen Sta to Lost Creek	Wells, Huntington, Wabash, Miami, Cass, Carroll, Tippecanoe, Vigo, Sullivan, Knox, Gibson, Posey	LOWER WABASH	FCA for PCB & Hg	2014 - 2016	93
WABASH RIVER-GREATHOUSE CREEK (ILL)	Wells, Huntington, Wabash, Miami, Cass, Carroll, Tippecanoe, Vigo, Sullivan, Knox, Gibson, Posey	LOWER WABASH	FCA for PCB & Hg	2014 - 2016	93
WABASH RIVER	Wells, Huntington, Wabash, Miami, Cass, Carroll, Tippecanoe, Vigo, Sullivan, Knox, Gibson, Posey	LOWER WABASH	FCA for PCB & Hg	2014 - 2016	93
WABASH RIVER	Wells, Huntington, Wabash, Miami, Cass, Carroll, Tippecanoe, Vigo, Sullivan, Knox, Gibson, Posey	LOWER WABASH	FCA for PCB & Hg	2014 - 2016	93

## Other Notices

Wabash River - D/S Wea Creek	Wells, Huntington, Wabash, Miami, Cass, Carroll, Tippecanoe, Vigo, Sullivan, Knox, Gibson, Posey	LOWER WABASH	FCA for PCB & Hg	2014 - 2016	93
WABASH RIVER	Wells, Huntington, Wabash, Miami, Cass, Carroll, Tippecanoe, Vigo, Sullivan, Knox, Gibson, Posey	LOWER WABASH	FCA for PCB & Hg; Lead	2014 - 2016	93
Wabash River - D/S Wea Creek	Wells, Huntington, Wabash, Miami, Cass, Carroll, Tippecanoe, Vigo, Sullivan, Knox, Gibson, Posey	LOWER WABASH	Impaired Biotic Communities	2014 - 2016	93
WABASH RIVER	Wells, Huntington, Wabash, Miami, Cass, Carroll, Tippecanoe, Vigo, Sullivan, Knox, Gibson, Posey	LOWER WABASH	Impaired Biotic Communities	2014 - 2016	93
Wabash River - county line to Little Pine Creek	Fountain, Vermillion	LOWER WABASH	FCA for PCB	2014 - 2016	94
Wabash River - Cayuga Gen Sta to Mill Cr	Fountain, Vermillion	LOWER WABASH	FCA for PCB	2014 - 2016	94
Wabash River - Attica	Fountain, Vermillion	LOWER WABASH	FCA for PCB	2014 - 2016	94
WEA CREEK	Tippecanoe	LOWER WABASH	FCA for PCB	2014 - 2016	96
WEA CREEK	Tippecanoe	LOWER WABASH	FCA for PCB	2014 - 2016	96
Wea Creek - Elliot Dt to mouth	Tippecanoe	LOWER WABASH	FCA for PCB	2014 - 2016	96
WEA CREEK	Tippecanoe	LOWER WABASH	Impaired Biotic Communities	2014 - 2016	96
Dry Br/ Turkey Run; Opossum Hollow Basin	Fountain, Warren	LOWER WABASH	Impaired Biotic Communities	2014 - 2016	338
Otterbein Ditch	Tippecanoe	LOWER WABASH	Impaired Biotic Communities	2014 - 2016	340
BIG PINE CREEK-ROUDEBUSH DITCH	White	LOWER WABASH	Impaired Biotic Communities; DO; Algae; Organic Enrichment	2014 - 2016	341
RUSH CREEK-EAST/WEST FORKS	Parke	LOWER WABASH	Impaired Biotic Communities	2014 - 2016	342
Walnut Fork - above Little Sugar Cr	Montgomery	LOWER WABASH	Impaired Biotic Communities	2014 - 2016	343
Walnut Fork - below Little Sugar Creek	Montgomery	LOWER WABASH	FCA for PCB	2014 - 2016	344
BROWN'S WONDER CREEK-ROSS DITCH	Boone	LOWER WABASH	Impaired Biotic Communities	2014 - 2016	345
Busseron Creek - Paxton	Sullivan	LOWER WABASH	Sulfates	2014 - 2016	356
BUSSERON CREEK-TANYARD BRANCH	Sullivan	LOWER WABASH	Sulfates; Total Dissolved Solids	2014 - 2016	356
Busseron Creek - Hymera	Sullivan	LOWER WABASH	Sulfates; Total Dissolved Solids	2014 - 2016	358
BIG BRANCH-MUD CREEK	Sullivan	LOWER WABASH	Sulfates; Total Dissolved Solids	2014 - 2016	359
Busseron Creek; Buttermilk Creek	Sullivan	LOWER WABASH	Sulfates; Total Dissolved Solids	2014 - 2016	360
Busseron Creek - Hymera	Sullivan	LOWER WABASH	Sulfates; Total Dissolved Solids	2014 - 2016	362
HONEY CREEK-ALLEN-DALE; Honey Creek - Thompson Ditch to mouth	Vigo	LOWER WABASH	Impaired Biotic Communities	2014 - 2016	363
LOST CREEK-NORTH TRIBUTARY	Vigo	LOWER WABASH	Impaired Biotic Communities	2014 - 2016	364

## Other Notices

Sulphur Creek unnamed tributary 2 basin	Vigo	LOWER WABASH	Sulfates	2014 - 2016	365
LITTLE CREEK-WOLF CREEK	Posey	LOWER WABASH	Impaired Biotic Communities	2014 - 2016	413
BIG CREEK-ALEXANDER CREEK	Posey	LOWER WABASH	Impaired Biotic Communities	2014 - 2016	414
NORTH CHAIN LAKE	St. Joseph	UPPER ILLINOIS	FCA for PCB & Hg	2014 - 2016	431
LOWER FISH LAKE	LaPorte	UPPER ILLINOIS	FCA for PCB & Hg	2014 - 2016	433
BASS LAKE	Starke	UPPER ILLINOIS	FCA for Hg	2014 - 2016	434
LAKE OF THE WOODS	Marshall	UPPER ILLINOIS	FCA for PCB & Hg	2014 - 2016	437
LAKE SULLIVAN	Sullivan	LOWER WABASH	FCA for Hg	2014 - 2016	467
Main Beaver Dam Dt - above Crown point WWTP	Lake	GREAT LAKES	Impaired Biotic Communities	2015 - 2017	1
Portage Burns Waterway	Porter	GREAT LAKES	FCA for PCB & Hg	2015 - 2017	2
Portage Burns Waterway	Porter	GREAT LAKES	Impaired Biotic Communities	2015 - 2017	2
Dunes Creek	Porter	GREAT LAKES	E. coli	2015 - 2017	6
Dunes Creek	Porter	GREAT LAKES	Impaired Biotic Communities	2015 - 2017	6
Elkhart River	Elkhart	GREAT LAKES	E. coli	2015 - 2017	7
Elkhart River	Elkhart	GREAT LAKES	FCA for PCB & Hg	2015 - 2017	7
MARQUETTE PARK LA-GOONS	Lake	GREAT LAKES	FCA for PCB	2015 - 2017	10
Jimmerson Lake	Steuben	GREAT LAKES	FCA for Hg	2015 - 2017	13
Juday Creek	St. Joseph	GREAT LAKES	E. coli	2015 - 2017	14
Juday Creek	St. Joseph	GREAT LAKES	FCA for PCB	2015 - 2017	14
Lake George	Lake	GREAT LAKES	FCA for PCB	2015 - 2017	15
Lake James	Steuben	GREAT LAKES	FCA for Hg	2015 - 2017	16
LAKE MICHIGAN SHORE-LINE	Lake, Porter, LaPorte	GREAT LAKES	FCA for PCB & Hg	2015 - 2017	17
Lake Shipshewana	LaGrange	GREAT LAKES	FCA for PCB	2015 - 2017	18
Wabee Lake	Kosciusko	GREAT LAKES	FCA for Hg	2015 - 2017	19
Lake Wawasee	Kosciusko	GREAT LAKES	FCA for PCB & Hg	2015 - 2017	20
Little Calumet River	Lake	GREAT LAKES	FCA for PCB & Hg	2015 - 2017	24
Long Lake	Steuben	GREAT LAKES	FCA for Hg	2015 - 2017	25
Marsh Lake	Steuben	GREAT LAKES	FCA for Hg	2015 - 2017	26
Niles Ditch	Lake	GREAT LAKES	Impaired Biotic Communities	2015 - 2017	29
Olin Lake	LaGrange	GREAT LAKES	FCA for Hg	2015 - 2017	30
Oliver Lake	LaGrange	GREAT LAKES	FCA for Hg	2015 - 2017	31
Pigeon Creek	Steuben	GREAT LAKES	FCA for PCB & Hg	2015 - 2017	33
Salt Creek; CLARK DITCH AND OTHER TRIBS	Porter	GREAT LAKES	E. coli	2015 - 2017	34
SALT CREEK	Porter	GREAT LAKES	E. coli	2015 - 2017	34
SALT CREEK	Porter	GREAT LAKES	Impaired Biotic Communities	2015 - 2017	34
SNOW LAKE	Steuben	GREAT LAKES	FCA for Hg	2015 - 2017	35
ST. JOSEPH RIVER	St. Joseph, Elkhart	GREAT LAKES	FCA for PCB & Hg	2015 - 2017	36
TRAIL CREEK	LaPorte	GREAT LAKES	E. coli	2015 - 2017	37
TRAIL CREEK	LaPorte	GREAT LAKES	FCA for PCB & Hg	2015 - 2017	37
Turkey Creek mainstem; Turkey Creek - Merrillville	Lake	GREAT LAKES	E. coli	2015 - 2017	38
Turkey Creek mainstem; Turkey Creek - Merrillville	Lake	GREAT LAKES	Impaired Biotic Communities	2015 - 2017	38
Wolf Lake	Lake	GREAT LAKES	FCA for PCB	2015 - 2017	39
Cedar Creek	Allen, Dekalb	GREAT LAKES	Impaired Biotic Communities; Nutrients; Organic Enrichment	2015 - 2017	41
HABEGGER DITCH	Adams	GREAT LAKES	Impaired Biotic Communities; Algae	2015 - 2017	43
Hamilton Lake	Steuben	GREAT LAKES	FCA for Hg	2015 - 2017	44
Maumee River	Allen	GREAT LAKES	FCA for PCB & Hg	2015 - 2017	45
Cedarville Reservoir - lower	Allen	GREAT LAKES	FCA for PCB & Hg	2015 - 2017	46

## Other Notices

ST. JOSEPH RIVER-MAINSTEM	Allen	GREAT LAKES	FCA for PCB & Hg	2015 - 2017	46
ST. MARYS RIVER	Allen	GREAT LAKES	FCA for PCB & Hg	2015 - 2017	47
BISCHOFF RESERVOIR	Ripley	OHIO TRIBUTARIES	FCA for Hg	2015 - 2017	198
BLUE RIVER	Harrison	OHIO TRIBUTARIES	FCA for PCB & Hg	2015 - 2017	199
BLUE RIVER	Harrison	OHIO TRIBUTARIES	FCA for PCB & Hg	2015 - 2017	199
BLUE RIVER	Harrison	OHIO TRIBUTARIES	FCA for PCB & Hg	2015 - 2017	199
DEAM LAKE	Clark	OHIO TRIBUTARIES	FCA for Hg	2015 - 2017	201
Ohio River	Clark, Floyd	OHIO RIVER	FCA for PCB; Lead	2015 - 2017	203
Ohio River	Vanderburgh	OHIO RIVER	FCA for PCB; Lead	2015 - 2017	204
OHIO RIVER - Newburgh to Green R	Dearborn, Ohio, Switzerland, Jefferson, Clark, Floyd, Harrison, Crawford, Perry, Spencer, Warrick, Vanderburgh, Posey	OHIO RIVER	FCA for PCB	2015 - 2017	205
OHIO RIVER - McAlpine to Greenwood, KY	Dearborn, Ohio, Switzerland, Jefferson, Clark, Floyd, Harrison, Crawford, Perry, Spencer, Warrick, Vanderburgh, Posey	OHIO RIVER	FCA for PCB; Dioxin	2015 - 2017	205
OHIO RIVER - Ohio state line to Markland Dam	Dearborn, Ohio, Switzerland, Jefferson, Clark, Floyd, Harrison, Crawford, Perry, Spencer, Warrick, Vanderburgh, Posey	OHIO RIVER	FCA for PCB; Dioxin	2015 - 2017	205
OHIO RIVER - Markland to Kentucky River	Dearborn, Ohio, Switzerland, Jefferson, Clark, Floyd, Harrison, Crawford, Perry, Spencer, Warrick, Vanderburgh, Posey	OHIO RIVER	FCA for PCB; Hg	2015 - 2017	205
OHIO RIVER - Salt Cr to Cannelton	Dearborn, Ohio, Switzerland, Jefferson, Clark, Floyd, Harrison, Crawford, Perry, Spencer, Warrick, Vanderburgh, Posey	OHIO RIVER	FCA for PCB; Hg; Dioxin	2015 - 2017	205
PIGEON CREEK	Vanderburgh	OHIO TRIBUTARIES	FCA for PCB; Organics; Chlordane	2015 - 2017	206
PIGEON CREEK-KLEYMEYER PARK	Vanderburgh	OHIO TRIBUTARIES	FCA for PCB; Organics; Chlordane; Sulfates; Total Dissolved Solids	2015 - 2017	206
PIGEON CREEK-HARPER DITCH	Vanderburgh	OHIO TRIBUTARIES	FCA for PCB; Organics; Chlordane; Total Dissolved Solids	2015 - 2017	206
SILVER CREEK	Floyd	OHIO TRIBUTARIES	FCA for PCB & Hg	2015 - 2017	207
VERSAILLES LAKE	Ripley	OHIO TRIBUTARIES	FCA for Hg	2015 - 2017	208
EAST BRANCH TRAIL CREEK AND OTHER TRIBS	LaPorte	GREAT LAKES	E. coli	2015 - 2017	209
GALENA RIVER	LaPorte	GREAT LAKES	E. coli	2015 - 2017	210
GALENA RIVER	LaPorte	GREAT LAKES	Impaired Biotic Communities	2015 - 2017	210
TRAIL CREEK TRIBUTARY BASIN	LaPorte	GREAT LAKES	Impaired Biotic Communities	2015 - 2017	211

## Other Notices

WEST BRANCH TRAIL CREEK AND OTHER TRIBS	LaPorte	GREAT LAKES	E. coli	2015 - 2017	212
KINZELE DITCH AND TRIBS	LaPorte/Porter	GREAT LAKES	E. coli	2015 - 2017	213
Rice Lake tributaries and outlet stream	Porter	GREAT LAKES	E. coli	2015 - 2017	214
Coffee Creek basin	Porter	GREAT LAKES	E. coli	2015 - 2017	215
Salt Creek tributary; Damon Run - Swanson Lamporte Ditch	Porter	GREAT LAKES	E. coli	2015 - 2017	216
Damon run and tributary	Porter	GREAT LAKES	E. coli	2015 - 2017	217
Damon run and tributary	Porter	GREAT LAKES	Impaired Biotic Communities	2015 - 2017	217
Deep river tributary Merrillville	Lake	GREAT LAKES	Impaired Biotic Communities; Siltation	2015 - 2017	218
DEEP RIVER U/S US30; DEEP RIVER ABOVE LAKE GEORGE DAM	Lake	GREAT LAKES	E. coli	2015 - 2017	219
CROFT DITCH; South Branch Elkhart River	Noble	GREAT LAKES	E. coli	2015 - 2017	226
NORTH BRANCH ELKHART RIVER AND TRIBS	Noble	GREAT LAKES	E. coli	2015 - 2017	227
Turkey Creek; TURKEY CREEK-SKINNER/HOOPINGARNER DITCHES	Kosciusko/Elkhart	GREAT LAKES	E. coli	2015 - 2017	228
WISLER DITCH AND TRIBS	Elkhart	GREAT LAKES	Impaired Biotic Communities; Nutrients	2015 - 2017	229
SOLOMON CREEK AND TRIBS	Elkhart	GREAT LAKES	E. coli	2015 - 2017	230
STONEY CREEK AND TRIB	Elkhart	GREAT LAKES	E. coli	2015 - 2017	231
BAUGO CREEK AND TRIBS	Elkhart	GREAT LAKES	E. coli	2015 - 2017	232
ROCK RUN CREEK AND TRIBS	Elkhart	GREAT LAKES	E. coli	2015 - 2017	233
ROCK RUN CREEK-HOOVER DITCH-BOYER DITCH	Elkhart	GREAT LAKES	Impaired Biotic Communities	2015 - 2017	234
PINE CREEK-NORTH/SOUTH FORKS	Elkhart	GREAT LAKES	E. coli	2015 - 2017	235
LITTLE ELKHART RIVER	Elkhart and LaGrange	GREAT LAKES	E. coli	2015 - 2017	236
LITTLE ELKHART RIVER	Elkhart and LaGrange	GREAT LAKES	Impaired Biotic Communities	2015 - 2017	236
WILLOW CREEK AND TRIB	St. Joseph	GREAT LAKES	E. coli	2015 - 2017	237
ST. JOSEPH RIVER TRIB	St. Joseph	GREAT LAKES	Impaired Biotic Communities	2015 - 2017	238
YELLOW CREEK-MARTZ CREEK	Adams	GREAT LAKES	Impaired Biotic Communities; Nutrients; Total Dissolved Solids	2015 - 2017	274
HOLTHOUSE DITCH-KOHNE DITCH	Adams	GREAT LAKES	Impaired Biotic Communities	2015 - 2017	275
CROOKED LAKE	Steuben	GREAT LAKES	FCA for Hg	2015 - 2017	418
PLEASANT LAKE	Steuben	GREAT LAKES	FCA for PCB & Hg	2015 - 2017	419
MCCLISH LAKE	Steuben/LaGrange	GREAT LAKES	FCA for Hg	2015 - 2017	422
LAKE OF THE WOODS	Steuben/LaGrange	GREAT LAKES	FCA for Hg	2015 - 2017	423
DEWART LAKE	Kosciusko	GREAT LAKES	FCA for Hg	2015 - 2017	444
BARREL AND A HALF LAKE	Kosciusko	GREAT LAKES	FCA for Hg	2015 - 2017	445

## Other Notices

SPEAR LAKE	Kosciusko	GREAT LAKES	FCA for Hg	2015 - 2017	446
SHOCK LAKE	Kosciusko	GREAT LAKES	FCA for Hg	2015 - 2017	447
SHOCK LAKE	Kosciusko	GREAT LAKES	Impaired Biotic Communities	2015 - 2017	447
KNAPP LAKE	Noble	GREAT LAKES	Impaired Biotic Communities	2015 - 2017	448
HINDMAN LAKE	Noble	GREAT LAKES	Impaired Biotic Communities	2015 - 2017	449
GORDY LAKE	Noble	GREAT LAKES	Impaired Biotic Communities	2015 - 2017	450
VILLAGE LAKE	Noble	GREAT LAKES	Impaired Biotic Communities	2015 - 2017	451
LONG LAKE	Noble	GREAT LAKES	FCA for Hg	2015 - 2017	452
BIXLER LAKE	Noble	GREAT LAKES	FCA for Hg	2015 - 2017	453
HENDERSON LAKE	Noble	GREAT LAKES	FCA for PCB	2015 - 2017	454
SYLVAN LAKE	Noble	GREAT LAKES	FCA for Hg	2015 - 2017	455
BISCHOFF RESERVOIR	Ripley	OHIO TRIBUTARIES	FCA for Hg	2015 - 2017	474
HOVEY LAKE	Posey	OHIO TRIBUTARIES	FCA for PCB	2015 - 2017	481
Gustafson Ditch - other tributaries	Porter	GREAT LAKES	E. coli	2015 - 2017	484
Big Walnut Creek; Big Walnut Creek - Ernie Pyle Memorial	Putnam	WEST FORK WHITE	FCA for Hg	2016 - 2018	101
Buck Creek	Delaware	WEST FORK WHITE	FCA for PCB & Hg	2016 - 2018	102
Cagles Mill Lake	Putnam	WEST FORK WHITE	FCA for Hg	2016 - 2018	103
DOLLAR HIDE CREEK	Marion	WEST FORK WHITE	FCA for PCB & Hg	2016 - 2018	106
EAST FORK WHITE LICK CREEK	Hendricks	WEST FORK WHITE	FCA for PCB	2016 - 2018	109
EEL RIVER	Greene	WEST FORK WHITE	FCA for PCB & Hg	2016 - 2018	113
FALL CREEK	Madison, Hamilton	WEST FORK WHITE	FCA for PCB & Hg	2016 - 2018	114
Geist Reservoir	Hamilton, Marion	WEST FORK WHITE	FCA for Hg	2016 - 2018	117
KILLBUCK CREEK	Madison	WEST FORK WHITE	FCA for PCB & Hg	2016 - 2018	125
LAKE LEMON	Monroe	WEST FORK WHITE	FCA for PCB & Hg	2016 - 2018	126
MORSE RESERVOIR	Hamilton	WEST FORK WHITE	FCA for Hg	2016 - 2018	135
PIPE CREEK	Madison	WEST FORK WHITE	FCA for PCB & Hg	2016 - 2018	136
RICHLAND CREEK	Monroe, Owen	WEST FORK WHITE	FCA for PCB & Hg	2016 - 2018	142
STONEY CREEK	Hamilton	WEST FORK WHITE	FCA for PCB	2016 - 2018	145
STOUT CREEK	Monroe	WEST FORK WHITE	FCA for PCB & Hg	2016 - 2018	146
WHITE RIVER	Marion	WEST FORK WHITE	FCA for PCB & Hg	2016 - 2018	148
WHITE RIVER	Marion	WEST FORK WHITE	FCA for PCB & Hg	2016 - 2018	149
WHITE RIVER	Marion	WEST FORK WHITE	Impaired Biotic Communities	2016 - 2018	149
WHITE RIVER	Marion	WEST FORK WHITE	FCA for PCB & Hg	2016 - 2018	150
WHITE RIVER	Hamilton, Marion	WEST FORK WHITE	FCA for PCB & Hg	2016 - 2018	151
WHITE RIVER	Hamilton, Marion	WEST FORK WHITE	Impaired Biotic Communities	2016 - 2018	151
WHITE RIVER	Morgan, Monroe	WEST FORK WHITE	FCA for PCB & Hg	2016 - 2018	152
WHITE RIVER	Morgan, Monroe	WEST FORK WHITE	Impaired Biotic Communities	2016 - 2018	152
WHITE RIVER - Pipe Cr to Cicero Cr	Hamilton	WEST FORK WHITE	FCA for PCB & Hg	2016 - 2018	153
WHITE RIVER - Pipe Cr to Cicero Cr	Hamilton	WEST FORK WHITE	Impaired Biotic Communities	2016 - 2018	153
WHITE RIVER	Marion, Johnson, Morgan	WEST FORK WHITE	FCA for PCB & Hg	2016 - 2018	154
WHITE RIVER	Marion, Johnson, Morgan	WEST FORK WHITE	Impaired Biotic Communities	2016 - 2018	154
WHITE RIVER	Monroe, Owen, Greene	WEST FORK WHITE	FCA for PCB & Hg	2016 - 2018	155
WHITE RIVER	Monroe, Owen, Greene	WEST FORK WHITE	Impaired Biotic Communities	2016 - 2018	155
WHITE RIVER	Greene, Daviess, Knox	WEST FORK WHITE	FCA for PCB & Hg	2016 - 2018	156
WHITE RIVER	Greene, Daviess, Knox	WEST FORK WHITE	Impaired Biotic Communities	2016 - 2018	156

## Other Notices

White River - Chesterfield to Indian Creek; White River - Perkinsville	Madison	WEST FORK WHITE	FCA for PCB	2016 - 2018	157
White River - Chesterfield to Indian Creek; White River - Perkinsville	Madison	WEST FORK WHITE	Impaired Biotic Communities	2016 - 2018	157
WHITE RIVER	Delaware	WEST FORK WHITE	FCA for PCB & Hg	2016 - 2018	158
WHITE RIVER	Greene, Owen	WEST FORK WHITE	FCA for PCB & Hg	2016 - 2018	159
White River - Elnora to Indian Creek; White River - Wheatland	Daviess, Knox	WEST FORK WHITE	FCA for PCB & Hg	2016 - 2018	160
White River - Elnora to Indian Creek; White River - Wheatland	Daviess, Knox	WEST FORK WHITE	Impaired Biotic Communities	2016 - 2018	160
White River; White River - Maysville	Daviess, Knox	WEST FORK WHITE	FCA for PCB & Hg	2016 - 2018	161
White River; White River - Maysville	Daviess, Knox	WEST FORK WHITE	Impaired Biotic Communities	2016 - 2018	161
WHITE RIVER	Randolph, Delaware	WEST FORK WHITE	FCA for PCB & Hg	2016 - 2018	162
WHITE RIVER	Randolph, Delaware	WEST FORK WHITE	Impaired Biotic Communities	2016 - 2018	162
WHITE LICK CREEK	Hendricks, Morgan	WEST FORK WHITE	FCA for PCB & Hg	2016 - 2018	163
WHITE RIVER	Pike, Gibson, Knox	WEST FORK WHITE	FCA for PCB & Hg	2016 - 2018	188
WHITE RIVER	Pike, Gibson, Knox	WEST FORK WHITE	Impaired Biotic Communities	2016 - 2018	188
PATOKA LAKE DAM-LICK CREEK	Orange, Crawford, Dubois	PATOKA RIVER	FCA for Hg	2016 - 2018	195
PATOKA RIVER	Dubois, Pike, Gibson	PATOKA RIVER	FCA for PCB & Hg	2016 - 2018	196
EAGLE CREEK RESERVOIR	Marion	WEST FORK WHITE	FCA for PCB	2016 - 2018	464
GRIFFY RESERVOIR	Monroe	WEST FORK WHITE	FCA for Hg	2016 - 2018	469
Portage Burns Waterway	Porter	GREAT LAKES	Pesticides; Lead; E. coli		2
LITTLE CALUMET RIVER	Porter	GREAT LAKES	Pesticides; E. coli; Impaired Biotic Communities		21
Blue Creek	Adams	GREAT LAKES	Impaired Biotic Communities; Ammonia; Nutrients		40

\*List subject to change as new data is acquired and analyzed.

\*\*The TMDL Development Schedule corresponds with IDEMs basin-rotation monitoring schedule to take advantage of all available resources for TMDL development.

Dates listed are initial suggestions based on our current water-quality monitoring strategy. Dates may change depending on public input, changes in available resources, or as different methods for developing TMDLs are perfected.

### OFFICE OF THE SECRETARY OF FAMILY AND SOCIAL SERVICES OFFICE OF MEDICAID POLICY AND PLANNING MEDICAID PUBLIC NOTICE REGARDING

LSA Document #01-420

In accordance with the public notice requirements of 42 CFR 447.205 and Section 1902(a)(13)(A) of the Social Security Act, the Office of the Secretary of Family and Social Services publishes this notice of significant changes in the Medicaid reimbursement methodology for community residential facilities for the developmentally disabled (CRF/DD).

The Medicaid reimbursement regulations at 405 IAC 1-12 are being amended to add an additional Medicaid payment category for certain community residential facilities for the developmentally disabled licensed as small extensive medical needs residence for adults. This new licensure category is exclusively for adults with extensive medical needs. The additional payment for this new licensure category will enable these facilities to better meet the costs of providing care to low-income adults with extensive medical needs in the community. Most of the individuals expected to be served in these community-based facilities will be former residents of large institutions such as Muscatatuck and Fort Wayne State Developmental Centers, as well as some private institutions. The addition of this new licensure category and corresponding reimbursement changes will assist Indiana in achieving its goal of serving eligible individuals with developmental disabilities in the least restrictive setting appropriate to their needs.



The proposed amendments to the reimbursement regulation, published in the *Indiana Register* on February 1, 2002, at 25 IR 1690, will make the following changes to the current CRF/DD reimbursement methodology:

- Adds language which specifies how the “average inflated allowable cost of the median patient day” will be established for the small extensive medical needs residences for adults, if there are fewer than six homes.
- Adds language which specifies how the fiftieth percentile rate for small extensive medical needs residences for adults will be established, if there are fewer than six homes.
- Adds the small extensive medical needs residence for adults to the profit add-on table.
- Adds the small extensive medical needs residence for adults to the overall rate limit table.

The proposed amendments are expected to increase payments for services provided by community residential facilities for the developmentally disabled by approximately \$24 million annually from federal and state funding. However, the proposed amendment is expected to result in an estimated fiscal savings of \$1,522,926.00 for the State of Indiana, as a result of the movement of individuals from institutional settings into community residential facilities. The payment adjustments are subject to the approval of the Centers for Medicare and Medicaid Services, with a proposed effective date of July 1, 2002.

A public hearing on these proposed changes was held on February 25, 2002, in the Indiana Government Center-South, 402 West Washington Street, Conference Center Room 1, Indianapolis, Indiana. All parties who were interested in the proposed changes were invited to attend.

Written comments concerning the proposed amendments received at or after the hearing are available for public inspection by contacting: Evelyn Murphy, Office of Medicaid Policy and Planning, Room W382, MS-07, Indianapolis, Indiana 46204-2739, or at telephone (317) 233-6467. Written comments from any source regarding these changes may be sent to the same address. A detailed analysis of the estimated fiscal impact and information concerning the proposed rates are also available upon request from the same address.

John Hamilton  
Secretary  
Office of the Secretary of Family and Social Services