

Document: Final Rule

Source: July 1, 2001, Indiana Register, Volume 24, Number 10

Disclaimer: These documents were created from the files used to produce the official (printed) Indiana Register, however, these documents are unofficial.

**TITLE 675 FIRE PREVENTION AND BUILDING
SAFETY COMMISSION**

LSA Document #00-109(F)

DIGEST

Adopts and amends the International Residential Code (IRC) for One and Two Family Dwellings as 675 IAC 14-4.2. Amends 675 IAC 17-1.5-11.5 of the 1999 Indiana Electrical Code so as to not be in conflict with the electrical provisions of the Indiana Residential Code. Repeals 675 IAC 14-4.1. Effective 30 days after filing with the secretary of state.

675 IAC 14-4.1

675 IAC 14-4.2

675 IAC 17-1.5-11.5

SECTION 1. 675 IAC 14-4.2 IS ADDED TO READ AS FOLLOWS:

Rule 4.2. The Indiana Residential Code

675 IAC 14-4.2-1 Adoption by reference; title; availability; purpose

Authority: IC 22-13-2-2; IC 22-13-2-13

Affected: IC 22-12; IC 22-13; IC 22-14; IC 22-15; IC 36-7

Sec. 1. (a) That certain document being titled the International Residential Code for One and Two Family Dwellings published by the International Code Council, 5203 Leesburg Pike, Suite 708, Falls Church, Virginia 22041-3401, is hereby adopted by reference as if fully set out in this rule save and except those revisions made in this rule.

(b) This rule shall be known as the Indiana Residential Code, 2001 edition and shall be published, except incorporated documents, by the fire and building services department, for general distribution and use under that title. Wherever the term "this code" is used throughout this rule, it shall mean the Indiana Residential Code, 2001 edition.

(c) This rule is available from the Fire and Building Services Department, Indiana Government Center-South, 402 West Washington Street, Room E221, Indianapolis, Indiana 46204.

(d) The purpose of this code is to provide minimum requirements for safety and to safeguard, property and public welfare by regulating and controlling the design, construction, installation, and quality of materials of residential structures as regulated by this code. (Fire Prevention and Building Safety Commission; 675 IAC 14-4.2-1; filed May 23, 2001, 4:02 p.m.: 24 IR 3032)

675 IAC 14-4.2-2 Chapter 1; administration

Authority: IC 22-13-2-2; IC 22-13-2-13

Affected: IC 4-21.5; IC 22-12-1-16; IC 22-12-1-17; IC 22-12-7; IC 22-13-2-7; IC 22-13-5; IC 22-14; IC 22-15; IC 36-7

Sec. 2. Delete Chapter 1 and substitute as follows: (a) SECTION R101 Application is added to read as follows:

SECTION R101 APPLICATION

The provisions of this code apply to the construction, prefabrication, alteration, addition, and remodel of detached one (1) or two (2) family dwellings and one (1) family townhouses not more than three (3) stories in height, and their accessory structures.

This code does not apply to manufactured homes as defined in SECTION R202, SECTION AE201, and IC 22-12-1-16, except as addressed in APPENDIX E.

This code does not apply to mobile structures as defined in IC 22-12-1-17.

Townhouses are classified as Class 1 structures and detached one (1) and two (2) family dwellings and their accessory structures are classified as Class 2 structures.

Provisions in the appendices are not enforceable unless specifically adopted.

The codes and standards referenced in this code shall be considered part of the requirements of this code to the prescribed extent of each such reference. Where differences occur between provisions of this code and referenced codes and standards, the provisions of this code shall apply.

EXCEPTION: Where enforcement of a code provision would violate the conditions of the listing of the equipment or appliance, the conditions of the listing and manufacturer's instructions shall apply.

(b) SECTION R102 is added to read as follows:

SECTION R102 APPEALS AND INTERPRETATIONS

Appeals from orders issued by the Fire Prevention and Building Safety Commission or the state building commissioner are governed by IC 4-21.5 and IC 22-12-7. Appeals from orders by a local unit of government are governed by IC 22-13-2-7 and local ordinance. Upon the written request of an interested person, the office of the state building commissioner may issue a written interpretation of a building law. The written interpretation as issued under IC 22-13-5 binds the interested person and the county or municipality with whom the interested person has the dispute until overruled under IC 4-21.5.

(c) SECTION R103 is added to read as follows:

SECTION R103 PLANS

Plans shall be submitted for Class 1 structures as required by the General Administrative Rules (675 IAC 12-6), and for Class 2 structures as required by local ordinance.

(d) SECTION R104 is added to read as follows:

SECTION R104 EXISTING CONSTRUCTION

For existing construction see the General Administrative Rules (675 IAC 12-4) and local ordinance.

(e) SECTION R105 is added to read as follows:

SECTION R105 ADDITIONS AND ALTERATIONS

Additions and alterations to any structure shall conform to that required for a new structure without requiring the existing structure to comply with all the requirements of this code. Additions or alterations shall not cause an existing structure to become unsafe.

(f) SECTION R106 is added to read as follows:

SECTION R106 ALTERNATIVE MATERIALS, METHODS, AND EQUIPMENT

SECTION R106.1 ALTERNATE MATERIALS, METHODS, AND EQUIPMENT

The provisions of this code are not intended to limit the appropriate use of materials, appliances, equipment, or methods of design or construction not specifically prescribed by this code, provided the building official determines that the proposed

alternate materials, appliances, equipment, or methods of design or construction are at least equivalent of that prescribed in this code in suitability, quality, strength, effectiveness, fire resistance, durability, dimensional stability, safety, and sanitation. For Class 1 structures, alternate materials, methods, equipment, and design shall be as required by the General Administrative Rules (675 IAC 12-6-11). Compliance with specific provisions of the Indiana Building Code (675 IAC 13) or the Indiana Plumbing Code (675 IAC 16) in lieu of the requirements of this code shall be permitted as an alternate.

SECTION R106.2 EVIDENCE

The building official may require that evidence or proof be submitted to substantiate any claims that may be made regarding the proposed alternate.

SECTION R106.3 TESTS

Determination of equivalence shall be based on design or test methods or other such standards. The building official may accept as supporting data to assist in this determination duly authenticated reports from the Building Officials and Code Administrators International, Inc., Southern Building Code Congress International, Inc., International Conference of Building Officials, the International Code Council, Inc., or their successors, or acceptance documents from the U. S. Department of Housing and Urban Development or the General Administrative Rules (675 IAC 12).

(g) SECTION R107 is added to read as follows:

SECTION R107 WORKMANSHIP

General Workmanship. All construction methods shall be accepted practices to ensure livable and safe housing and shall demonstrate acceptable workmanship. (*Fire Prevention and Building Safety Commission; 675 IAC 14-4.2-2; filed May 23, 2001, 4:02 p.m.: 24 IR 3033*)

675 IAC 14-4.2-3 Section R202; definitions

Authority: IC 22-13-2-2; IC 22-13-2-13

Affected: IC 22-12; IC 22-13; IC 22-14; IC 22-15; IC 36-7

Sec. 3. Change SECTION R202 Definitions as follows: (a) Change in the definition of ACCESSORY STRUCTURE to read as follows: In one and two family dwellings and for the purpose of APPENDIX E, structures not more than three (3) stories high with separate means of egress, and the use of which is incidental to that of the main building and which is located on the same lot.

(b) Change the definition of ALTERATION by deleting “other than repair”.

(c) Change APPROVED to read as follows: APPROVED means, as to materials, equipment, and types of construction, acceptance by the building official by one (1) of the following methods:

(1) investigation or tests conducted by recognized authorities; or

(2) investigation or tests conducted by technical or scientific organizations; or accepted principles.

The investigation, tests or principles shall establish that the materials, equipment and types of construction are safe for their intended purpose.

(d) Change the definition of BUILDING, EXISTING to read as follows: BUILDING, EXISTING. Existing building is a building or structure erected prior to the adoption of this code.

(e) Change the definition of BUILDING OFFICIAL to read as follows: BUILDING OFFICIAL as used in this code shall be the local official or officials as designated in local ordinance, except it shall be the state building commissioner for Industrialized Building Systems under 675 IAC 15 and IC 22-15 and for plan review for townhouses under 675 IAC 12 and IC 22-15.

(f) Delete the definition of CONSTRUCTION DOCUMENTS and substitute to read as follows: CONSTRUCTION DOCUMENTS. For construction documents see the General Administrative Rules (675 IAC 12) for Class 1 structures, and

local ordinance for Class 2 structures.

(g) Delete **EMERGENCY ESCAPE AND RESCUE OPENING** and substitute to read as follows: **EMERGENCY ESCAPE OPENING**. An operable window, door, or similar device that provides for a means of escape in the event of an emergency.

(h) Delete from the definition of **ESSENTIALLY NONTOXIC TRANSFER FLUIDS** the following: “; and FDA-approved boiler water additions for steam boilers”.

(i) Change the definition of **EXISTING INSTALLATIONS** to read as follows: Any system regulated by this code that was legally installed prior to the effective date of this code.

(j) Add after the definition of **FACTORY-BUILT CHIMNEY** the definition of **FAMILY** to read as follows: **FAMILY** means an individual or two (2) or more persons related by blood or marriage and/or a group of not more than ten (10) persons (excluding servants) who need not be related by blood or marriage living together in a dwelling unit.

(k) Add in the definition of **FOAM PLASTIC INSULATION** “of” between the words “consisting” and “open”.

(l) Delete in the definition of **HEATING DEGREE DAY (HDD)** “acceptable to the code” and substitute “approved by the building”.

(m) Add the following definitions after **INSULATING SHEATHING**:

INTERNATIONAL BUILDING CODE means the Indiana Building Code (675 IAC 13).

ICC ELECTRICAL CODE means the Indiana Electrical Code (675 IAC 17).

INTERNATIONAL FIRE CODE means the Indiana Fire Code (675 IAC 22).

INTERNATIONAL FUEL GAS CODE means the Indiana Mechanical Code (675 IAC 18).

INTERNATIONAL MECHANICAL CODE means the Indiana Mechanical Code (675 IAC 18).

INTERNATIONAL PLUMBING CODE means the Indiana Plumbing Code (675 IAC 16).

(n) Delete the definition of **LABELED** and substitute to read as follows: **LABELED**. Equipment or materials to which has been attached a label, symbol, or other identifying mark of an organization engaged in product evaluation, that maintains periodic inspection or production of labeled equipment or materials and by whose labeling the manufacturer indicates compliance with appropriate standards or performance in a specified manner.

(o) Delete the definition of **LISTED AND LISTING** and substitute to read as follows: **LISTED AND LISTING**. Equipment or materials included in a list published by an organization engaged in product evaluation, that maintains periodic inspection of production of listed equipment or materials and whose listing states either that the equipment or material meets appropriate standards or has been tested and found suitable for use in a specified manner.

(p) Add the definition of **NATIONAL ELECTRICAL CODE** after **MULTIPLE STATION SMOKE ALARM** to read as follows: **NATIONAL ELECTRICAL CODE** means the Indiana Electrical Code (675 IAC 17).

(q) Add the definition of **NFPA 70** after **NATURAL DRAFT SYSTEM** to read as follows: **NFPA 70** means the Indiana Electrical Code (675 IAC 17).

(r) Delete the definition of **PERMIT**.

(s) Delete in the definition of **PLUMBING** “, repairs, maintenance”.

(t) Delete in the definition of **PLUMBING APPURTENANCE** “, maintenance, servicing, economy”.

(u) Delete the definition of **POTABLE WATER** and substitute to read as follows: **POTABLE WATER**. Water that at the point of use is acceptable for human consumption under drinking water standards adopted by the Water Pollution Control Board at 327 IAC 8.

(v) Delete the definition of **REGISTERED DESIGN PROFESSIONAL**.

(w) Add the definition of RECESSED LIGHT after RECEPTOR to read as follows: RECESSED LIGHT means a light fixture that by design penetrates the thermal boundary of the building.

(x) Delete the definition of ROOF REPAIR.

(y) Add the definition of SLAB-ON-GRADE FLOOR INSULATION after SKYLIGHT AND SLOPED GLAZING to read as follows: SLAB-ON-GRADE FLOOR INSULATION means insulation around the perimeter of the floor slab or its supporting foundation.

(z) Add to the definition of TOWNHOUSE, between “units” and “in”, “separated by property lines”. (Fire Prevention and Building Safety Commission; 675 IAC 14-4.2-3; filed May 23, 2001, 4:02 p.m.: 24 IR 3034)

675 IAC 14-4.2-4 Section R301.2; climatic and geographic design criteria

Authority: IC 22-13-2-2; IC 22-13-2-13

Affected: IC 22-12; IC 22-13; IC 22-14; IC 22-15; IC 36-7

Sec. 4. Delete the last sentence of SECTION R301.2. (Fire Prevention and Building Safety Commission; 675 IAC 14-4.2-4; filed May 23, 2001, 4:02 p.m.: 24 IR 3035)

675 IAC 14-4.2-5 Sections R301.2.1.1 and R301.2.1.2; design criteria, internal pressure

Authority: IC 22-13-2-2; IC 22-13-2-13

Affected: IC 22-12; IC 22-13; IC 22-14; IC 22-15; IC 36-7

Sec. 5. Delete SECTIONS R301.2.1.1 and R301.2.1.2. (Fire Prevention and Building Safety Commission; 675 IAC 14-4.2-5; filed May 23, 2001, 4:02 p.m.: 24 IR 3035)

675 IAC 14-4.2-6 Table R301.2(1); climatic and geographical design criteria

Authority: IC 22-13-2-2; IC 22-13-2-13

Affected: IC 22-12; IC 22-13; IC 22-14; IC 22-15; IC 36-7

Sec. 6. Delete TABLE R301.2(1) and corresponding footnotes and substitute to read as follows:

TABLE R301.2(1)

No.	County	Wind Speed ¹ (MPH)	Seismic Zone ²	Snow (PSF)	Foundation ³	Winter Design Temp	Decay	Termite	Weathering ⁴
01	Adams	90	B	20	36	1°	Slight to Moderate	Moderate to Heavy	Severe
02	Allen	90	B	20	36	1°	Slight to Moderate	Moderate to Heavy	Severe
03	Bartholomew	90	B	20	24	9°	Slight to Moderate	Moderate to Heavy	Severe
04	Benton	90	B	20	36	1°	Slight to Moderate	Moderate to Heavy	Severe
05	Blackford	90	B	20	30	2°	Slight to Moderate	Moderate to Heavy	Severe
06	Boone	90	B	20	30	2°	Slight to Moderate	Moderate to Heavy	Severe
07	Brown	90	B	20	24	9°	Slight to Moderate	Moderate to Heavy	Severe
08	Carroll	90	B	20	36	1°	Slight to Moderate	Moderate to Heavy	Severe
09	Cass	90	A	20	36	1°	Slight to Moderate	Moderate to Heavy	Severe

10	Clark	90	B	20	24	9°	Slight to Moderate	Moderate to Heavy	Severe
11	Clay	90	C	20	24	9°	Slight to Moderate	Moderate to Heavy	Severe
12	Clinton	90	B	20	30	2°	Slight to Moderate	Moderate to Heavy	Severe
13	Crawford	90	C	20	24	9°	Slight to Moderate	Moderate to Heavy	Severe
14	Daviess	90	C ₁	20	24	9°	Slight to Moderate	Moderate to Heavy	Severe
15	Dearborn	90	B	20	24	9°	Slight to Moderate	Moderate to Heavy	Severe
16	Decatur	90	B	20	24	9°	Slight to Moderate	Moderate to Heavy	Severe
17	Dekalb	90	B	30	36	1°	Slight to Moderate	Moderate to Heavy	Severe
18	Delaware	90	B	20	30	2°	Slight to Moderate	Moderate to Heavy	Severe
19	Dubois	90	C	20	24	9°	Slight to Moderate	Moderate to Heavy	Severe
20	Elkhart	90	A	30	36	1°	Slight to Moderate	Moderate to Heavy	Severe
21	Fayette	90	B	20	30	2°	Slight to Moderate	Moderate to Heavy	Severe
22	Floyd	90	B	20	24	9°	Slight to Moderate	Moderate to Heavy	Severe
23	Fountain	90	B	20	30	2°	Slight to Moderate	Moderate to Heavy	Severe
24	Franklin	90	B	20	24	9°	Slight to Moderate	Moderate to Heavy	Severe
25	Fulton	90	A	30	36	1°	Slight to Moderate	Moderate to Heavy	Severe
26	Gibson	90	C ₁	20	24	9°	Slight to Moderate	Moderate to Heavy	Severe
27	Grant	90	B	20	30	2°	Slight to Moderate	Moderate to Heavy	Severe
28	Greene	90	C	20	24	9°	Slight to Moderate	Moderate to Heavy	Severe
29	Hamilton	90	B	20	30	2°	Slight to Moderate	Moderate to Heavy	Severe
30	Hancock	90	B	20	30	2°	Slight to Moderate	Moderate to Heavy	Severe
31	Harrison	90	B	20	24	9°	Slight to Moderate	Moderate to Heavy	Severe
32	Hendricks	90	B	20	30	2°	Slight to Moderate	Moderate to Heavy	Severe
33	Henry	90	B	20	30	2°	Slight to Moderate	Moderate to Heavy	Severe
34	Howard	90	A	20	30	2°	Slight to Moderate	Moderate to Heavy	Severe
35	Huntington	90	B	20	36	1°	Slight to Moderate	Moderate to Heavy	Severe

36	Jackson	90	B	20	24	9°	Slight to Moderate	Moderate to Heavy	Severe
37	Jasper	90	B	30	36	1°	Slight to Moderate	Moderate to Heavy	Severe
38	Jay	90	B	20	30	2°	Slight to Moderate	Moderate to Heavy	Severe
39	Jefferson	90	B	20	24	9°	Slight to Moderate	Moderate to Heavy	Severe
40	Jennings	90	B	20	24	9°	Slight to Moderate	Moderate to Heavy	Severe
41	Johnson	90	B	20	30	2°	Slight to Moderate	Moderate to Heavy	Severe
42	Knox	90	C ₁	20	24	9°	Slight to Moderate	Moderate to Heavy	Severe
43	Kosciusko	90	A	30	36	1°	Slight to Moderate	Moderate to Heavy	Severe
44	LaGrange	90	A	30	36	1°	Slight to Moderate	Moderate to Heavy	Severe
45	Lake	90	B	30	36	1°	Slight to Moderate	Moderate to Heavy	Severe
46	LaPorte	90	A	30	36	1°	Slight to Moderate	Moderate to Heavy	Severe
47	Lawrence	90	C	20	24	9°	Slight to Moderate	Moderate to Heavy	Severe
48	Madison	90	B	20	30	2°	Slight to Moderate	Moderate to Heavy	Severe
49	Marion	90	B	20	30	2°	Slight to Moderate	Moderate to Heavy	Severe
50	Marshall	90	A	30	36	1°	Slight to Moderate	Moderate to Heavy	Severe
51	Martin	90	C	20	24	9°	Slight to Moderate	Moderate to Heavy	Severe
52	Miami	90	A	20	36	1°	Slight to Moderate	Moderate to Heavy	Severe
53	Monroe	90	C	20	24	9°	Slight to Moderate	Moderate to Heavy	Severe
54	Montgomery	90	B	20	30	2°	Slight to Moderate	Moderate to Heavy	Severe
55	Morgan	90	B	20	30	2°	Slight to Moderate	Moderate to Heavy	Severe
56	Newton	90	B	30	36	1°	Slight to Moderate	Moderate to Heavy	Severe
57	Noble	90	A	30	36	1°	Slight to Moderate	Moderate to Heavy	Severe
58	Ohio	90	B	20	24	9°	Slight to Moderate	Moderate to Heavy	Severe
59	Orange	90	C	20	24	9°	Slight to Moderate	Moderate to Heavy	Severe
60	Owen	90	C	20	24	9°	Slight to Moderate	Moderate to Heavy	Severe
61	Parke	90	B	20	30	2°	Slight to Moderate	Moderate to Heavy	Severe

62	Perry	90	C	20	24	9°	Slight to Moderate	Moderate to Heavy	Severe
63	Pike	90	C ₁	20	24	9°	Slight to Moderate	Moderate to Heavy	Severe
64	Porter	90	B	30	36	1°	Slight to Moderate	Moderate to Heavy	Severe
65	Posey	90	C ₁	20	24	9°	Slight to Moderate	Moderate to Heavy	Severe
66	Pulaski	90	A	30	36	1°	Slight to Moderate	Moderate to Heavy	Severe
67	Putnam	90	B	20	30	2°	Slight to Moderate	Moderate to Heavy	Severe
68	Randolph	90	B	20	30	2°	Slight to Moderate	Moderate to Heavy	Severe
69	Ripley	90	B	20	24	9°	Slight to Moderate	Moderate to Heavy	Severe
70	Rush	90	B	20	30	2°	Slight to Moderate	Moderate to Heavy	Severe
71	St. Joseph	90	A	30	36	1°	Slight to Moderate	Moderate to Heavy	Severe
72	Scott	90	B	20	24	9°	Slight to Moderate	Moderate to Heavy	Severe
73	Shelby	90	B	20	30	2°	Slight to Moderate	Moderate to Heavy	Severe
74	Spencer	90	C ₁	20	24	9°	Slight to Moderate	Moderate to Heavy	Severe
75	Starke	90	A	30	36	1°	Slight to Moderate	Moderate to Heavy	Severe
76	Steuben	90	A	30	36	1°	Slight to Moderate	Moderate to Heavy	Severe
77	Sullivan	90	C ₁	20	24	9°	Slight to Moderate	Moderate to Heavy	Severe
78	Switzerland	90	B	20	24	9°	Slight to Moderate	Moderate to Heavy	Severe
79	Tippecanoe	90	B	20	30	2°	Slight to Moderate	Moderate to Heavy	Severe
80	Tipton	90	B	20	30	2°	Slight to Moderate	Moderate to Heavy	Severe
81	Union	90	B	20	30	2°	Slight to Moderate	Moderate to Heavy	Severe
82	Vanderburgh	90	C ₁	20	24	9°	Slight to Moderate	Moderate to Heavy	Severe
83	Vermillion	90	B	20	30	2°	Slight to Moderate	Moderate to Heavy	Severe
84	Vigo	90	C	20	24	9°	Slight to Moderate	Moderate to Heavy	Severe
85	Wabash	90	A	20	36	1°	Slight to Moderate	Moderate to Heavy	Severe
86	Warren	90	B	20	30	2°	Slight to Moderate	Moderate to Heavy	Severe
87	Warrick	90	C ₁	20	24	9°	Slight to Moderate	Moderate to Heavy	Severe

88	Washington	90	B	20	24	9°	Slight to Moderate	Moderate to Heavy	Severe
89	Wayne	90	B	20	30	2°	Slight to Moderate	Moderate to Heavy	Severe
90	Wells	90	B	20	36	1°	Slight to Moderate	Moderate to Heavy	Severe
91	White	90	B	20	36	1°	Slight to Moderate	Moderate to Heavy	Severe
92	Whitley	90	A	20	36	1°	Slight to Moderate	Moderate to Heavy	Severe

¹ Wind exposure category shall be determined on a site-specific basis in accordance with SECTION R301.2.1.4.

² See SECTION R301.2.2.

³ Foundation is minimum foundation depth to bottom of footing from the top of the finished grade above the footing in inches.

⁴ The grade of masonry units shall be determined from ASTM C34, C55, C62, C73, C90, C129, C216 or C652. (Fire Prevention and Building Safety Commission; 675 IAC 14-4.2-6; filed May 23, 2001, 4:02 p.m.: 24 IR 3035)

675 IAC 14-4.2-7 Figures R301.2(1), R301.2(2), R301.2(3), R301.2(4), R301.2(5), R301.2(6), and R301.2(7)

Authority: IC 22-13-2-2; IC 22-13-2-13

Affected: IC 22-12; IC 22-13; IC 22-14; IC 22-15; IC 36-7

Sec. 7. Delete Figures R301.2(1), R301.2(2), R301.2(3), R301.2(4), R301.2(5), R301.2(6), and R301.2(7). (Fire Prevention and Building Safety Commission; 675 IAC 14-4.2-7; filed May 23, 2001, 4:02 p.m.: 24 IR 3037)

675 IAC 14-4.2-8 Table R301.2.1.2

Authority: IC 22-13-2-2; IC 22-13-2-13

Affected: IC 22-12; IC 22-13; IC 22-14; IC 22-15; IC 36-7

Sec. 8. Delete Table R301.2.1.2 and the corresponding footnotes. (Fire Prevention and Building Safety Commission; 675 IAC 14-4.2-8; filed May 23, 2001, 4:02 p.m.: 24 IR 3037)

675 IAC 14-4.2-9 Section R301.2.2; seismic provisions

Authority: IC 22-13-2-2; IC 22-13-2-13

Affected: IC 22-12; IC 22-13; IC 22-14; IC 22-15; IC 36-7

Sec. 9. Change SECTION R301.2.2 to read as follows: The seismic provisions of this code shall apply to buildings constructed in Seismic Design Categories C and C₁ as determined in accordance with this section.

EXCEPTION: Detached one and two family dwellings located in Seismic Design Category C and C₁ are exempt from the seismic requirements of this code except such dwellings in Category C₁ shall comply with the provisions of SECTIONS R301.2.2.5 and R606.11.2 and FIGURE 606.10(2). Townhouses in Category C and C₁ are not exempt from the seismic provisions that apply to Categories C and C₁.

The weight limitations of SECTION R301.2.2.2 shall apply to buildings in all Seismic Design Categories regulated by this code. Buildings in Seismic Design Category C, townhouses, shall be constructed in accordance with the additional requirements of SECTIONS R301.2.2.3 and R301.2.2.4. Buildings in Category C₁ are exempt from the provisions of SECTIONS R301.2.2.3, R301.2.2.4, and R301.2.2.7 but shall comply with the provisions of SECTION R301.2.2.5. (Fire Prevention and Building Safety Commission; 675 IAC 14-4.2-9; filed May 23, 2001, 4:02 p.m.: 24 IR 3038)

675 IAC 14-4.2-10 Section R301.2.2.1; determination of seismic design category

Authority: IC 22-13-2-2; IC 22-13-2-13

Affected: IC 22-12; IC 22-13; IC 22-14; IC 22-15; IC 36-7

Sec. 10. Delete SECTION R301.2.2.1. (Fire Prevention and Building Safety Commission; 675 IAC 14-4.2-10; filed May 23, 2001, 4:02 p.m.: 24 IR 3038)

675 IAC 14-4.2-11 Section R301.2.2.1.1; alternate determination of seismic design category

Authority: IC 22-13-2-2; IC 22-13-2-13

Affected: IC 22-12; IC 22-13; IC 22-14; IC 22-15; IC 36-7

Sec. 11. Change SECTION R301.2.2.1.1 as follows: (a) Change the first sentence to read as follows: The Seismic Design Categories and corresponding Short Period Design Spectral Response Accelerations, S_{DS} are based on soil Site Class D, as defined in the Indiana Building Code, 675 IAC 13.

(b) Change the second sentence to read as follows: If soil conditions are other than Site Class D, the Short Period Design Spectral Response Acceleration, S_{DS} , for a site can be determined according to the Indiana Building Code, 675 IAC 13.

(c) Change the third sentence to read as follows: The value of S_{DS} determined according to the Indiana Building Code, 675 IAC 13, is permitted to be used to set the Seismic Design Category according to TABLE R301.2.2.1.1, and to interpolate between values in TABLES R602.10.3 and R603.7 and other seismic design requirements of this code. (Fire Prevention and Building Safety Commission; 675 IAC 14-4.2-11; filed May 23, 2001, 4:02 p.m.: 24 IR 3038)

675 IAC 14-4.2-12 Section R301.2.2.1.2; alternative determination of seismic design category E

Authority: IC 22-13-2-2; IC 22-13-2-13

Affected: IC 22-12; IC 22-13; IC 22-14; IC 22-15; IC 36-7

Sec. 12. Delete SECTION R301.2.2.1.2. (Fire Prevention and Building Safety Commission; 675 IAC 14-4.2-12; filed May 23, 2001, 4:02 p.m.: 24 IR 3038)

675 IAC 14-4.2-13 Section R301.2.2.2; determination of seismic design category

Authority: IC 22-13-2-2; IC 22-13-2-13

Affected: IC 22-12; IC 22-13; IC 22-14; IC 22-15; IC 36-7

Sec. 13. Delete the first sentence of SECTION R301.2.2.2. (Fire Prevention and Building Safety Commission; 675 IAC 14-4.2-13; filed May 23, 2001, 4:02 p.m.: 24 IR 3038)

675 IAC 14-4.2-14 Section R301.2.2.9; irregular buildings in seismic design categories D_1 and D_2

Authority: IC 22-13-2-2; IC 22-13-2-13

Affected: IC 22-12; IC 22-13; IC 22-14; IC 22-15; IC 36-7

Sec. 14. Delete SECTION R301.2.2.9. (Fire Prevention and Building Safety Commission; 675 IAC 14-4.2-14; filed May 23, 2001, 4:02 p.m.: 24 IR 3038)

675 IAC 14-4.2-15 Section R301.2.4; floodplain construction

Authority: IC 22-13-2-2; IC 22-13-2-13

Affected: IC 22-12; IC 22-13; IC 22-14; IC 22-15; IC 36-7

Sec. 15. Delete SECTION R301.2.4 and substitute to read as follows: See local ordinance for flood plain construction. (Fire Prevention and Building Safety Commission; 675 IAC 14-4.2-15; filed May 23, 2001, 4:02 p.m.: 24 IR 3038)

675 IAC 14-4.2-16 TABLE R301.4; minimum uniformly distributed live loads

Authority: IC 22-13-2-2; IC 22-13-2-13

Affected: IC 22-12; IC 22-13; IC 22-14; IC 22-15; IC 36-7

Sec. 16. Delete Table R301.4 and corresponding footnotes and substitute to read as follows:

TABLE R301.4

MINIMUM UNIFORMLY DISTRIBUTED LIVE LOADS

USE	LIVE LOAD (pounds per square foot)
Attics—nonaccessible ¹	0

Attics—accessible ²	10
Attics—uninhabitable ³	20
Attics—inhabitable ⁴	30 ⁵
Balconies—exterior	60
Decks	40
Rooms other than sleeping rooms	40
Fire escapes	40
Garages ^{6,8}	50
Guards and handrails ⁹	200
Sleeping rooms	30
Stairs	40/300 ⁷

¹Attics where attic access is not required by SECTION R807.

²Attics where attic access is provided as required by SECTION R807 and a disappearing stairway or a permanent stairway is not provided.

³Attic spaces having a minimum clear height greater than six (6) feet and are not capable of containing the prism described in footnote 4, and are served by a disappearing or a permanent stairway.

⁴Attic spaces that are capable of containing a rectangular prism seven (7) feet high by six (6) feet wide by eight (8) feet long free of any structural member.

⁵For trusses, the thirty (30) pounds per square foot live load shall be applied over the entire length of the truss panel that contains the prism required by footnote 4.

⁶Passenger cars only.

⁷Individual stair treads shall be designed for the uniformly distributed live load of forty (40) pounds per square foot or a three hundred (300) pound concentrated load acting over an area of four (4) square inches, whichever produces the greater stress.

⁸Elevated garage floors shall be capable of supporting a two thousand (2,000) pound load applied over a twenty (20) square inch area.

⁹A single concentrated load applied in any direction at any point along the top.

(Fire Prevention and Building Safety Commission; 675 IAC 14-4.2-16; filed May 23, 2001, 4:02 p.m.: 24 IR 3038)

675 IAC 14-4.2-17 Section R302.1; exterior walls

Authority: IC 22-13-2-2; IC 22-13-2-13

Affected: IC 22-12; IC 22-13; IC 22-14; IC 22-15; IC 36-7

Sec. 17. Change SECTION R302.1 as follows: (a) Change the exception to read as follows:

EXCEPTIONS: 1. Tool and storage sheds, playhouses and similar structures are not required to provide wall protection based on location on the lot. Projections beyond the exterior shall not extend over the lot line.

(b) Add EXCEPTION 2 to read as follows: 2. Where structures are placed closer than three (3) feet to the property lines, the one-hour fire-resistive rating shall not apply if a perpetual, platted, and recorded easement creates a nonbuildable separation of at least six (6) feet between structures and adjacent properties. *(Fire Prevention and Building Safety Commission; 675 IAC 14-4.2-17; filed May 23, 2001, 4:02 p.m.: 24 IR 3039)*

675 IAC 14-4.2-18 Section R302.2; openings

Authority: IC 22-13-2-2; IC 22-13-2-13
Affected: IC 22-12; IC 22-13; IC 22-14; IC 22-15; IC 36-7

Sec. 18. Add EXCEPTION 3 to the end of SECTION R302.2 to read as follows: **3.** Where structures are placed closer than three (3) feet to the property line, the limitation on openings in exterior walls shall not apply if a perpetual, platted, and recorded easement creates a nonbuildable separation of at least six (6) feet between structures on adjacent properties. *(Fire Prevention and Building Safety Commission; 675 IAC 14-4.2-18; filed May 23, 2001, 4:02 p.m.: 24 IR 3039)*

675 IAC 14-4.2-19 Section R303.1; habitable rooms
Authority: IC 22-13-2-2; IC 22-13-2-13
Affected: IC 22-12; IC 22-13; IC 22-14; IC 22-15; IC 36-7

Sec. 19. Delete the third sentence of SECTION R303.1. *(Fire Prevention and Building Safety Commission; 675 IAC 14-4.2-19; filed May 23, 2001, 4:02 p.m.: 24 IR 3039)*

675 IAC 14-4.2-20 Section R305.1; minimum height
Authority: IC 22-13-2-2; IC 22-13-2-13
Affected: IC 22-12; IC 22-13; IC 22-14; IC 22-15; IC 36-7

Sec. 20. Add EXCEPTION 4 to SECTION R305.1 to read as follows: **4.** Bathrooms shall have a minimum ceiling height of six (6) feet eight (8) inches at the front clearance area for the fixtures as shown in FIGURE R307.2. Ceiling height above fixtures shall be such that the fixture may be used for its intended purpose. A shower or bath tub equipped with a shower head shall have a minimum ceiling height of six (6) feet eight (8) inches. *(Fire Prevention and Building Safety Commission; 675 IAC 14-4.2-20; filed May 23, 2001, 4:02 p.m.: 24 IR 3039)*

675 IAC 14-4.2-20.5 Section R308.4; hazardous locations
Authority: IC 22-13-2-2; IC 22-13-2-13
Affected: IC 22-12; IC 22-13; IC 22-14; IC 22-15; IC 36-7

Sec. 20.5. Delete Exception number 9 to SECTION R308.4. *(Fire Prevention and Building Safety Commission; 675 IAC 14-4.2-20.5; filed May 23, 2001, 4:02 p.m.: 24 IR 3039)*

675 IAC 14-4.2-21 Section R309; garages and carports
Authority: IC 22-13-2-2; IC 22-13-2-13
Affected: IC 22-12; IC 22-13; IC 22-14; IC 22-15; IC 36-7

Sec. 21. Change the title and text of SECTION R309 as follows: (a) Change the title of SECTION R309 to read as follows: **GARAGES, CARPORTS, OR ACCESSORY STRUCTURES.**

(b) Change the second paragraph of SECTIONS R309.3 and R309.4 to read as follows: **The area of floor used for parking of automobiles or other vehicles shall be sloped to facilitate the movement of liquids to an approved drain or toward the main vehicle entry doorway.**

(c) Delete the title and text of SECTION R309.5, Flood hazard areas, and substitute to read as follows:
R309.5 Detached garages, carports, or accessory structures. R309.5.1 Separation. Detached garages, carports, or accessory structures shall provide not less than six (6) feet of open space between same and the residence, except that such space may be roofed in compliance with chapters 8 and 9 of this code. Detached garages, carports, or accessory structures separated from the residence by less than six (6) feet of open space shall be considered the same as attached and shall comply with this code. In no case shall garages, carports, or accessory structures be attached to the dwelling when the footings of the structure to be attached are above the frost line and the adjacent footings of the dwelling are at or below the frost line unless approved by the building official.

R309.5.2 Requirements. Detached garages, detached carports, or accessory structures shall be constructed to applicable sections of this code unless otherwise noted in Table R309. Any habitable rooms(s) located within a detached garage, detached carport, or accessory structure shall meet all applicable sections of this code and shall be provided with an exit door as

specified in SECTION R311.1.

(d) Add TABLE R309 at the end of SECTION R309 to read as follows:

TABLE R309

DETACHED GARAGES, DETACHED CARPORTS, OR ACCESSORY STRUCTURES

CONSTRUCTION REQUIREMENTS	Portable 120 Square Feet Maximum	Monolithic ¹ Footings 721 Square Feet Maximum	Structures with Conventional Foundation
Footings and Foundations	No Requirements	8" W × 18" D ² 12" W × 12" D	Indiana One and Two Family Dwelling Code
Floors	No Requirements	Indiana One and Two Family Dwelling Code	
Exterior Walls	No Requirements		
Girders and Headers	No Requirements		
Roof Systems	No Requirements		
Electrical Power Limits	One 15 Amp. Circuit		
Water Supply/Sanitation	Not Allowed	1	
Permanent Heat	Not Allowed	1	
Maximum Number of Stories	1	1 ³	3

NOTES:

¹In structures utilizing monolithic floor systems, the water and sanitation systems and permanent heating facilities may be installed when approved flexible connections are provided.

²6 × 6 - W2.9 × W2.9 welded wire fabric or equivalent is required when monolithic slab footing system is used.

³One (1) story unless otherwise approved by the building official.

(Fire Prevention and Building Safety Commission; 675 IAC 14-4.2-21; filed May 23, 2001, 4:02 p.m.: 24 IR 3040)

675 IAC 14-4.2-22 Section R310; emergency escape and rescue openings

Authority: IC 22-13-2-2; IC 22-13-2-13

Affected: IC 22-12; IC 22-13; IC 22-14; IC 22-15; IC 36-7

Sec. 22. (a) Change SECTION R310 as follows: (a) Change the title to read as follows: EMERGENCY ESCAPE OPENINGS.

(b) Change the title and text of SECTION R310.1 to read as follows: R310.1. Emergency escape required. Every sleeping room shall have at least one (1) openable emergency escape window or exterior door opening for emergency escape. Where openings are provided as a means of escape, they shall have a sill height of not more than forty-four (44) inches (one thousand one hundred eighteen (1,118) millimeters) above the floor. Where a door opening having a threshold below the adjacent ground elevation serves as an emergency escape opening and is provided with a bulkhead enclosure, the bulkhead enclosure shall comply with SECTION R310.3. The net clear opening dimensions required by this section shall be obtained by the normal operation of the window or door opening from the inside. Escape window openings with a finished sill height below the adjacent ground elevation shall be provided with a window well in accordance with SECTION R310.2.

(c) Change SECTION R310.1.1 to read as follows: R310.1.1 Minimum opening area. All emergency escape openings shall have a minimum net clear opening of five and seven-tenths (5.7) square feet (five hundred thirty-thousandths (0.530) m²).

EXCEPTION: Grade floor openings shall have a minimum net clear opening of five (5) square feet (four hundred sixty-five thousandths (0.465) m²).

(d) Change SECTION R310.1.2 as follows: Minimum opening height, the minimum net clear opening [*sic., opening*] height shall be 22 inches (610 mm).

(e) Change SECTION R310.1.4 to read as follows: R310.1.4 Operational constraints. Emergency escape openings shall be operational from the inside of the room without the use of key(s) or tool(s).

(f) Change the first sentence of SECTION R310.2 to read as follows: R310.2 Window wells. Window wells required for emergency escape shall have horizontal dimensions that allow the door or window of the emergency escape opening to be fully

opened.

(g) Delete in SECTION R310.2.1 “below the adjacent ground level”.

(h) Delete in two (2) places in SECTION R310.4 “and rescue”.

(i) Add SECTION R310.5 to read as follows: **R310.5 Sleeping room replacement window alterations.** When replacing existing sleeping room windows, at least one (1) of the replacement windows shall comply with SECTION R310.5. Replacement windows that do not meet the current emergency escape requirements of SECTION R310, without structural alterations to the dwelling, may be installed as long as they meet the following requirements.

1. Replacement window installation shall not reduce the existing net clear opening by more than six (6) inches horizontally and six (6) inches vertically, except that awning replacement windows shall not reduce the existing net clear opening by more than three (3) inches vertically.

2. In no case shall the replacement window net clear opening height be less than twenty-two (22) inches (five hundred fifty-nine (559) millimeters) and the net clear opening width be less than twenty (20) inches (five hundred eight (508) millimeters).

3. Double hung or sliding replacement windows shall have both sashes removable without the use of a key or tool. Single hung installations are not allowed by this section.

4. Casement and awning replacement windows may obtain the required net clear opening with the use of egress hardware.

5. If the replacement window cannot meet the minimum requirements listed in subdivisions 1, 2, 3, and 4, the existing window shall be replaced with a like window without reducing the existing net clear opening.

(Fire Prevention and Building Safety Commission; 675 IAC 14-4.2-22; filed May 23, 2001, 4:02 p.m.: 24 IR 3040)

675 IAC 14-4.2-23 Section R311.2; type of lock or latch

Authority: IC 22-13-2-2; IC 22-13-2-13

Affected: IC 22-12; IC 22-13; IC 22-14; IC 22-15; IC 36-7

Sec. 23. Delete “egress” between “all” and “doors” and delete “or special knowledge or effort” from SECTION R311.2.

(Fire Prevention and Building Safety Commission; 675 IAC 14-4.2-23; filed May 23, 2001, 4:02 p.m.: 24 IR 3041)

675 IAC 14-4.2-24 Section R311.5; exit facilities

Authority: IC 22-13-2-2; IC 22-13-2-13

Affected: IC 22-12; IC 22-13; IC 22-14; IC 22-15; IC 36-7

Sec. 24. Delete SECTION R311.5. *(Fire Prevention and Building Safety Commission; 675 IAC 14-4.2-24; filed May 23, 2001, 4:02 p.m.: 24 IR 3041)*

675 IAC 14-4.2-25 Section R312.1, Section R312.1.1 and Section R312.1.2; general, landings for stairways and landings for doors

Authority: IC 22-13-2-2; IC 22-13-2-13

Affected: IC 22-12; IC 22-13; IC 22-14; IC 22-15; IC 36-7

Sec. 25. Delete the text and SECTION numbers of SECTIONS R312.1, R312.1.1, and R312.1.2 and substitute to read as follows: (a) Add SECTION R312.1 to read as follows:

R312.1 Landings. There shall be a floor or landing at the top and bottom of each stairway.

EXCEPTION: At the top of an interior flight of stairs, provided the door does not swing over the stairs.

(b) Add SECTION R312.1.1 to read as follows: **R312.1.1 Required exit.** There shall be a floor or landing on each side of the required exit door and the landing shall comply with SECTION R312.2.

(c) Add SECTION R312.1.2 to read as follows: **R312.1.2 Other exterior doors (nonrequired exits).** Exterior doors, other than the required exit that requires three (3) or more risers, shall be provided with landings and steps as required by FIGURE R312, or guards, or ramps.

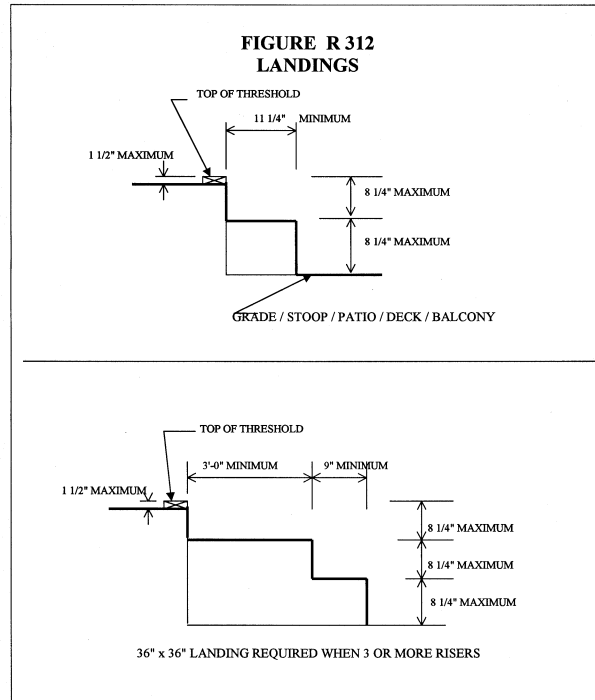
Exterior doors, other than the required exit that require two (2) or fewer risers, shall be provided with an intermediate tread with a width of not less than eleven and one-fourth (11¼) inches (two hundred eighty-six (286) millimeters) as

required by FIGURE R312 or be provided with a landing as stated in SECTION R312.2.

(d) Add SECTION R312.1.3 to read as follows: **R312.1.3 Landings at doors.** The floor or landing at a door shall not be more than one and one-half (1.5) inches (thirty-eight (38) millimeters) lower than the top of the threshold.

EXCEPTION: The landing at an exterior doorway shall not be more than eight and one-fourth (8¼) inches (one hundred ninety-seven (197) millimeters) below the top of the threshold, provided that the door, other than an exterior storm or screen door does not swing over the landing.

(e) Add FIGURE R312 at the end of SECTION R312.1.



(Fire Prevention and Building Safety Commission; 675 IAC 14-4.2-25; filed May 23, 2001, 4:02 p.m.: 24 IR 3041)

675 IAC 14-4.2-26 Section R314.2; treads and risers

Authority: IC 22-13-2-2; IC 22-13-2-13

Affected: IC 22-12; IC 22-13; IC 22-14; IC 22-15; IC 36-7

Sec. 26. Change in the first sentence of SECTION R314.2 “7¾ inches (196 mm)” to “8¼ inches” and “10 inches (254 mm)” to “9 inches”. (Fire Prevention and Building Safety Commission; 675 IAC 14-4.2-26; filed May 23, 2001, 4:02 p.m.: 24 IR 3042)

675 IAC 14-4.2-27 Section R314.9; bulkhead enclosure stairways

Authority: IC 22-13-2-2; IC 22-13-2-13

Affected: IC 22-12; IC 22-13; IC 22-14; IC 22-15; IC 36-7

Sec. 27. Change in SECTION R314.9 “egress” to “exit”. (Fire Prevention and Building Safety Commission; 675 IAC 14-4.2-27; filed May 23, 2001, 4:02 p.m.: 24 IR 3042)

675 IAC 14-4.2-27.5 Section R315.1; handrails

Authority: IC 22-13-2-2; IC 22-13-2-13

Affected: IC 22-12; IC 22-13; IC 22-14; IC 22-15; IC 36-7

Sec. 27.5. Amend SECTION R315.1 to read as follows: **R315.1 Handrails.** Handrails having minimum and maximum heights of 34 inches and 38 inches (864 mm and 965 mm), respectively, measured vertically from the nosing of the treads, shall

be provided on at least one side of stairways. All required handrails shall serve each tread the full length of the interior stairs with three or more risers and exterior stairs with two or more risers from a point directly above the top riser of a flight to a point directly above the lowest riser of the flight. Ends shall be returned or shall terminate in newel posts or safety terminals. Handrails adjacent to a wall shall have a space of not less than 1.5 inches (33 mm) between the wall and handrail.

EXCEPTIONS: 1. Handrails shall be permitted to be interrupted by a newel post at a turn.

2. The use of a volute, turnout or starting easing shall be allowed over the lowest tread.

(Fire Prevention and Building Safety Commission; 675 IAC 14-4.2-27.5; filed May 23, 2001, 4:02 p.m.: 24 IR 3042)

675 IAC 14-4.2-28 Section R315.2; handrail grip size

Authority: IC 22-13-2-2; IC 22-13-2-13

Affected: IC 22-12; IC 22-13; IC 22-14; IC 22-15; IC 36-7

Sec. 28. Change in the first sentence of SECTION R315.2 “2⁵/₈ inches (67 mm)” to “2⁷/₈ inches”. *(Fire Prevention and Building Safety Commission; 675 IAC 14-4.2-28; filed May 23, 2001, 4:02 p.m.: 24 IR 3042)*

675 IAC 14-4.2-29 Section R316.1; guards required

Authority: IC 22-13-2-2; IC 22-13-2-13

Affected: IC 22-12; IC 22-13; IC 22-14; IC 22-15; IC 36-7

Sec. 29. Add in the first sentence of SECTION R316.1 “, decks” between “balconies” and “or”. *(Fire Prevention and Building Safety Commission; 675 IAC 14-4.2-29; filed May 23, 2001, 4:02 p.m.: 24 IR 3042)*

675 IAC 14-4.2-30 Section R316.2; guard opening limitations

Authority: IC 22-13-2-2; IC 22-13-2-13

Affected: IC 22-12; IC 22-13; IC 22-14; IC 22-15; IC 36-7

Sec. 30. Add in the first sentence of SECTION R316.2 “, decks” between “balconies” and “and”. *(Fire Prevention and Building Safety Commission; 675 IAC 14-4.2-30; filed May 23, 2001, 4:02 p.m.: 24 IR 3042)*

675 IAC 14-4.2-31 Section R317.1.1; alterations, repairs, and additions

Authority: IC 22-13-2-2; IC 22-13-2-13; IC 22-11-18

Affected: IC 22-12; IC 22-13; IC 22-14; IC 22-15; IC 36-7

Sec. 31. Change SECTION R317.1.1 as follows: (a) Delete “, repairs” in the title.

(b) Delete “, repairs” in the first paragraph.

(c) Delete “or repairs” in EXCEPTION 1.

(d) Change EXCEPTION 2 to read as follows: Repairs are exempt from the requirements of this section. *(Fire Prevention and Building Safety Commission; 675 IAC 14-4.2-31; filed May 23, 2001, 4:02 p.m.: 24 IR 3042)*

675 IAC 14-4.2-32 Section R318.2.3; attics and crawl spaces

Authority: IC 22-13-2-2; IC 22-13-2-13

Affected: IC 22-12; IC 22-13; IC 22-14; IC 22-15; IC 36-7

Sec. 32. Delete SECTION R318.2.3 and substitute to read as follows: Within an attic or crawl space, foam plastics shall be protected against ignition by one and one-half (1½) inch thick mineral fiber insulation, or one-fourth (¼) inch thick plywood, or three-eighths (¾) inch particleboard, or one-fourth (¼) inch hardboard, or three-eighths (¾) inch gypsum wallboard or corrosion-resistant steel having a base metal thickness of sixteen-thousandths (0.016) inch or other approved material installed in such a manner that the foam plastic is not exposed.

EXCEPTION: Foam plastic insulation may be installed on the walls of attics and crawl spaces with no covering applied provided all the following conditions are met:

1. The maximum thickness/density is within the following:

a. Maximum 4-inch thickness with a maximum density of 4.0 pcf.

- b. Up to 2-inch thickness with a maximum density of 2.5 pcf.
- c. Up to 1-inch thickness with a maximum density of 2.0 pcf.
- 2. The maximum flame spread is twenty-five (25).
- 3. The maximum smoke development rating is four hundred fifty (450).
- 4. The entry to the attic or crawl space is made only for service or maintenance (not used for storage).
- 5. There are not interconnected basement areas.
- 6. The air in the attic or crawl space is not circulated to other parts of the building.
- 7. Where fuel-burning appliances other than direct vent appliances or exposed (not sealed) motors are located more than ten (10) feet away from the foam insulation in the attic or crawl space.

(Fire Prevention and Building Safety Commission; 675 IAC 14-4.2-32; filed May 23, 2001, 4:02 p.m.: 24 IR 3043)

675 IAC 14-4.2-33 Section R322.1; moisture control

Authority: IC 22-13-2-2; IC 22-13-2-13

Affected: IC 22-12; IC 22-13; IC 22-14; IC 22-15; IC 36-7

Sec. 33. Delete EXCEPTION 3 in SECTION R322.1. *(Fire Prevention and Building Safety Commission; 675 IAC 14-4.2-33; filed May 23, 2001, 4:02 p.m.: 24 IR 3043)*

675 IAC 14-4.2-34 Section R323.1; location required

Authority: IC 22-13-2-2; IC 22-13-2-13

Affected: IC 22-12; IC 22-13; IC 22-14; IC 22-15; IC 36-7

Sec. 34. (a) Change SECTION 323.1, item 2 to read as follows: All sills or plates that rest on concrete or masonry exterior walls and are less than six (6) inches from exposed ground or masonry veneer ledge where the wood sill is less than four (4) inches above exposed ground.

(b) Add an exception to SECTION R323.1, item 7 to read as follows: 7. Wood furring strips or other wood framing members attached directly to the interior of exterior masonry walls or concrete walls below grade except where an approved vapor retarder is applied between the wall and the furring strips or framing members.

EXCEPTION: Exterior walls below grade complying with SECTION R406.

(Fire Prevention and Building Safety Commission; 675 IAC 14-4.2-34; filed May 23, 2001, 4:02 p.m.: 24 IR 3043)

675 IAC 14-4.2-35 Section R323.1.2; geographical areas

Authority: IC 22-13-2-2; IC 22-13-2-13

Affected: IC 22-12; IC 22-13; IC 22-14; IC 22-15; IC 36-7

Sec. 35. Change SECTION R323.1.2 to read as follows: Approved naturally durable or pressure preservatively treated wood shall be used for those portions of wood members that form the structural supports of buildings, balconies, decks, porches, or similar permanent building appurtenances when such members are exposed to the weather without adequate protection from a roof, eave, overhang, or other covering that would prevent moisture or water accumulation on the surface or at joints between members. Such members may include the following:

- 1. Horizontal members, such as girders, joists, and decking.
- 2. Vertical members, such as posts, poles, and columns.
- 3. Both horizontal and vertical members.

(Fire Prevention and Building Safety Commission; 675 IAC 14-4.2-35; filed May 23, 2001, 4:02 p.m.: 24 IR 3043)

675 IAC 14-4.2-36 Section R323.1.4; wood columns

Authority: IC 22-13-2-2; IC 22-13-2-13

Affected: IC 22-12; IC 22-13; IC 22-14; IC 22-15; IC 36-7

Sec. 36. Change SECTION 323.1.4, EXCEPTION to read as follows: EXCEPTION: Posts or columns separated or supported above the floor or finish grade by a minimum of one (1) inch of impervious moisture barrier material. *(Fire Prevention and Building Safety Commission; 675 IAC 14-4.2-36; filed May 23, 2001, 4:02 p.m.: 24 IR 3043)*

675 IAC 14-4.2-37 Section R323.2; quality mark

Authority: IC 22-13-2-2; IC 22-13-2-13
Affected: IC 22-12; IC 22-13; IC 22-14; IC 22-15; IC 36-7

Sec. 37. Change in SECTION R323.2 “approved by an accreditation body” to “accepted by an accreditation body”. (*Fire Prevention and Building Safety Commission; 675 IAC 14-4.2-37; filed May 23, 2001, 4:02 p.m.: 24 IR 3043*)

675 IAC 14-4.2-38 Section R324.4; foam plastic protection
Authority: IC 22-13-2-2; IC 22-13-2-13
Affected: IC 22-12; IC 22-13; IC 22-14; IC 22-15; IC 36-7

Sec. 38. Delete SECTION R324.4. (*Fire Prevention and Building Safety Commission; 675 IAC 14-4.2-38; filed May 23, 2001, 4:02 p.m.: 24 IR 3044*)

675 IAC 14-4.2-39 Section R326; accessibility
Authority: IC 22-13-2-2; IC 22-13-2-13
Affected: IC 22-12; IC 22-13; IC 22-14; IC 22-15; IC 36-7

Sec. 39. Delete SECTION R326. (*Fire Prevention and Building Safety Commission; 675 IAC 14-4.2-39; filed May 23, 2001, 4:02 p.m.: 24 IR 3044*)

675 IAC 14-4.2-40 SECTION 327; flood-resistant construction
Authority: IC 22-13-2-2; IC 22-13-2-13
Affected: IC 22-12; IC 22-13; IC 22-14; IC 22-15; IC 36-7

Sec. 40. Delete SECTION 327 FLOOD-RESISTANT CONSTRUCTION and substitute to read as follows: See local ordinance. (*Fire Prevention and Building Safety Commission; 675 IAC 14-4.2-40; filed May 23, 2001, 4:02 p.m.: 24 IR 3044*)

675 IAC 14-4.2-41 SECTION 401.1; application
Authority: IC 22-13-2-2; IC 22-13-2-13
Affected: IC 22-12; IC 22-13; IC 22-14; IC 22-15; IC 36-7

Sec. 41. Delete the exceptions in SECTION 401.1. (*Fire Prevention and Building Safety Commission; 675 IAC 14-4.2-41; filed May 23, 2001, 4:02 p.m.: 24 IR 3044*)

675 IAC 14-4.2-42 Section R401.3; drainage
Authority: IC 22-13-2-2; IC 22-13-2-13
Affected: IC 22-12; IC 22-13; IC 22-14; IC 22-15; IC 36-7

Sec. 42. Delete the first sentence of SECTION R401.3. (*Fire Prevention and Building Safety Commission; 675 IAC 14-4.2-42; filed May 23, 2001, 4:02 p.m.: 24 IR 3044*)

675 IAC 14-4.2-43 Section R402.1.2; wood treatment
Authority: IC 22-13-2-2; IC 22-13-2-13
Affected: IC 22-12; IC 22-13; IC 22-14; IC 22-15; IC 36-7

Sec. 43. Change in the first sentence of SECTION R402.1.2 “accredited agency” to “approved agency”. (*Fire Prevention and Building Safety Commission; 675 IAC 14-4.2-43; filed May 23, 2001, 4:02 p.m.: 24 IR 3044*)

675 IAC 14-4.2-44 Section R403.1; general
Authority: IC 22-13-2-2; IC 22-13-2-13
Affected: IC 22-12; IC 22-13; IC 22-14; IC 22-15; IC 36-7

Sec. 44. Delete in the first sentence of SECTION R403.1 “continuous”. (*Fire Prevention and Building Safety Commission; 675 IAC 14-4.2-44; filed May 23, 2001, 4:02 p.m.: 24 IR 3044*)

675 IAC 14-4.2-45 TABLE R403.1; minimum width of concrete or masonry footings

Authority: IC 22-13-2-2; IC 22-13-2-13

Affected: IC 22-12; IC 22-13; IC 22-14; IC 22-15; IC 36-7

Sec. 45. Delete TABLE R403.1 and substitute to read as follows:

TABLE R403.1

**MINIMUM WIDTH OF CONCRETE OR
MASONRY FOOTINGS (inches)¹**

	LOAD-BEARING VALUE OF SOIL (psf)			
	1,500	2,000	3,000	≥4,000
Conventional Light-Frame Construction				
1-story	12	12	12	12
2-story	15	12	12	12
3-story	23	17	12	12
4-Inch Brick Veneer over Light-Frame Construction or 8-inch Hollow Concrete Masonry				
1-story	12	12	12	12
2-story	21	16	12	12
3-story	32	24	16	12
8-Inch Solid Concrete or Masonry, or Fully Grouted Masonry				
1-story	16	12	12	12
2-story	29	21	14	12
3-story	42	32	21	16

For SI: 1 inch = 25.4 mm, 1 psf = 0.0479 kN/m².

¹Where minimum footing width is 12 inches a single wythe of solid or fully grouted 12-inch nominal concrete masonry units is permitted to be used.

(Fire Prevention and Building Safety Commission; 675 IAC 14-4.2-45; filed May 23, 2001, 4:02 p.m.: 24 IR 3044)

675 IAC 14-4.2-45.5 Section R403.1.2; continuous footings in seismic design categories D₁ and D₂

Authority: IC 22-13-2-2; IC 22-13-2-13

Affected: IC 22-12; IC 22-13; IC 22-14; IC 22-15; IC 36-7

Sec. 45.5. Delete the title and text of SECTION R403.1.2 and substitute to read as follows: Footings in Seismic Design Category C₁. In Seismic Design Category C₁, as a minimum requirement, two (2) #4 bars shall be placed longitudinally in the bottom of the exterior footings. *(Fire Prevention and Building Safety Commission; 675 IAC 14-4.2-45.5; filed May 23, 2001, 4:02 p.m.: 24 IR 3044)*

675 IAC 14-4.2-45.6 Section R403.1.3; seismic reinforcing

Authority: IC 22-13-2-2; IC 22-13-2-13

Affected: IC 22-12; IC 22-13; IC 22-14; IC 22-15; IC 36-7

Sec. 45.6 Delete SECTION R403.1.3. *(Fire Prevention and Building Safety Commission; 675 IAC 14-4.2-45.6; filed May 23, 2001, 4:02 p.m.: 24 IR 3044)*

675 IAC 14-4.2-46 Section R403.1.3.1; foundations with stemwalls

Authority: IC 22-13-2-2; IC 22-13-2-13

Affected: IC 22-12; IC 22-13; IC 22-14; IC 22-15; IC 36-7

Sec. 46. Delete SECTION R403.1.3.1. *(Fire Prevention and Building Safety Commission; 675 IAC 14-4.2-46; filed May 23, 2001, 4:02 p.m.: 24 IR 3045)*

675 IAC 14-4.2-46.5 Section R403.1.3.2; slabs-on-ground with turned-down footings

Authority: IC 22-13-2-2; IC 22-13-2-13

Affected: IC 22-12; IC 22-13; IC 22-14; IC 22-15; IC 36-7

Sec. 46.5. Delete Section R403.1.3.2. *(Fire Prevention and Building Safety Commission; 675 IAC 14-4.2-46.5; filed May 23, 2001, 4:02 p.m.: 24 IR 3045)*

675 IAC 14-4.2-46.6 Section R403.1.4; minimum depth

Authority: IC 22-13-2-2; IC 22-13-2-13

Affected: IC 22-12; IC 22-13; IC 22-14; IC 22-15; IC 36-7

Sec. 46.6. Change SECTION R403.1.4 to read as follows: Delete the second paragraph of SECTION R403.1.4 and substitute to read as follows: In Seismic Design Category C₁, interior footings cast monolithically with a slab on grade shall extend to a depth of not less than 8 inches below the top of the slab or to the undisturbed ground or engineered fill whichever is greater. *(Fire Prevention and Building Safety Commission; 675 IAC 14-4.2-46.6; filed May 23, 2001, 4:02 p.m.: 24 IR 3045)*

675 IAC 14-4.2-47 Section R403.1.7.3; foundation elevation

Authority: IC 22-13-2-2; IC 22-13-2-13

Affected: IC 22-12; IC 22-13; IC 22-14; IC 22-15; IC 36-7

Sec. 47. Delete SECTION R403.1.7.3. *(Fire Prevention and Building Safety Commission; 675 IAC 14-4.2-47; filed May 23, 2001, 4:02 p.m.: 24 IR 3045)*

675 IAC 14-4.2-48 Section R403.1.7.4; alternate setback and clearances

Authority: IC 22-13-2-2; IC 22-13-2-13

Affected: IC 22-12; IC 22-13; IC 22-14; IC 22-15; IC 36-7

Sec. 48. Delete the second sentence of SECTION R403.1.7.4. *(Fire Prevention and Building Safety Commission; 675 IAC 14-4.2-48; filed May 23, 2001, 4:02 p.m.: 24 IR 3045)*

675 IAC 14-4.2-49 Section R403.1.8; foundations on expansive soils

Authority: IC 22-13-2-2; IC 22-13-2-13

Affected: IC 22-12; IC 22-13; IC 22-14; IC 22-15; IC 36-7

Sec. 49. Change SECTION R403.1.8 to read as follows: Foundation and floor slabs for buildings located on expansive soils shall be designed in accordance with the Indiana Building Code (675 IAC 13). *(Fire Prevention and Building Safety Commission; 675 IAC 14-4.2-49; filed May 23, 2001, 4:02 p.m.: 24 IR 3045)*

675 IAC 14-4.2-49.5 Figure R403.3(1); insulation placement for frost-protected footings in heated buildings

Authority: IC 22-13-2-2; IC 22-13-2-13

Affected: IC 22-12; IC 22-13; IC 22-14; IC 22-15; IC 36-7

Sec. 49.5. Amend the top drawing of Figure R403.3(1) by changing the “12 IN Min” vertical dimension from the top of slab to the bottom of the horizontal insulation to be “12 IN Min” from the top of final grade to the bottom of the horizontal insulation. *(Fire Prevention and Building Safety Commission; 675 IAC 14-4.2-49.5; filed May 23, 2001, 4:02 p.m.: 24 IR 3045)*

675 IAC 14-4.2-50 Section R403.3.3; termite damage

Authority: IC 22-13-2-2; IC 22-13-2-13

Affected: IC 22-12; IC 22-13; IC 22-14; IC 22-15; IC 36-7

Sec. 50. Delete SECTION R403.3.3. *(Fire Prevention and Building Safety Commission; 675 IAC 14-4.2-50; filed May 23, 2001, 4:02 p.m.: 24 IR 3045)*

675 IAC 14-4.2-51 Section R404.1; concrete and masonry foundation walls

Authority: IC 22-13-2-2; IC 22-13-2-13

Affected: IC 22-12; IC 22-13; IC 22-14; IC 22-15; IC 36-7

Sec. 51. Delete the last sentence of SECTION R404.1. *(Fire Prevention and Building Safety Commission; 675 IAC 14-4.2-51; filed May 23, 2001, 4:02 p.m.: 24 IR 3045)*

675 IAC 14-4.2-52 Section R404.1.1; masonry foundation walls

Authority: IC 22-13-2-2; IC 22-13-2-13

Affected: IC 22-12; IC 22-13; IC 22-14; IC 22-15; IC 36-7

Sec. 52. Delete SECTION R404.1.1 and substitute to read as follows: Concrete masonry and clay foundation walls shall be constructed as set forth in TABLES R404.1.1(1), R404.1.1(2), R404.1.1(3), and R404.1.1(4); however, TABLE R404.1.1(1) can only be used in Seismic Category C₁ when the unbalanced fill is four (4) feet or less and TABLES R404.1.1(2), R404.1.1(3), and R404.1.1(4) shall be used when the unbalanced fill exceeds four (4) feet in Category C₁. These TABLES shall also comply with the provisions of this section and the applicable provisions of SECTIONS R606, R607, and R608. Rubble stone masonry foundation walls shall be constructed in accordance with SECTIONS R404.1.8 and R606.2.2. Rubble stone masonry walls shall not be used in Seismic Design Category C₁. Foundations constructed in Seismic Design Category C₁ shall be exempt from the seismic requirements of SECTION R606. *(Fire Prevention and Building Safety Commission; 675 IAC 14-4.2-52; filed May 23, 2001, 4:02 p.m.: 24 IR 3045)*

675 IAC 14-4.2-53 Section R404.1.2; concrete foundation walls

Authority: IC 22-13-2-2; IC 22-13-2-13

Affected: IC 22-12; IC 22-13; IC 22-14; IC 22-15; IC 36-7

Sec. 53. Delete SECTION R404.1.2 and substitute to read as follows: Concrete foundation walls shall be constructed as set forth in TABLES R404.1.1(1), R404.1.1(2), R404.1.1(3), and R404.1.1(4), and shall also comply with the provisions of this section and the applicable provisions of SECTION R402.2. In Seismic Design Category C₁, TABLE R404.1.1(1) can be used only when the height of the unbalanced fill is four (4) feet or less. *(Fire Prevention and Building Safety Commission; 675 IAC 14-4.2-53; filed May 23, 2001, 4:02 p.m.: 24 IR 3046)*

675 IAC 14-4.2-54 Section R404.1.5.1; pier and curtain wall foundations

Authority: IC 22-13-2-2; IC 22-13-2-13

Affected: IC 22-12; IC 22-13; IC 22-14; IC 22-15; IC 36-7

Sec. 54. (a) Delete in the third line of SECTION R404.1.5.1 the word “diameter”.

(b) Change in item 5 of SECTION R404.1.5.1, “accepted” to “approved”. *(Fire Prevention and Building Safety Commission; 675 IAC 14-4.2-54; filed May 23, 2001, 4:02 p.m.: 24 IR 3046; errata filed Jun 12, 2001, 2:18 p.m.: 24 IR 3070)*

675 IAC 14-4.2-55 Section R404.2.1; wood grade

Authority: IC 22-13-2-2; IC 22-13-2-13

Affected: IC 22-12; IC 22-13; IC 22-14; IC 22-15; IC 36-7

Sec. 55. Delete the second and third sentences of SECTION R404.2.1. *(Fire Prevention and Building Safety Commission; 675 IAC 14-4.2-55; filed May 23, 2001, 4:02 p.m.: 24 IR 3046)*

675 IAC 14-4.2-56 Section R404.4; insulating concrete form foundation walls

Authority: IC 22-13-2-2; IC 22-13-2-13

Affected: IC 22-12; IC 22-13; IC 22-14; IC 22-15; IC 36-7

Sec. 56. Delete the last sentence of SECTION R404.4. *(Fire Prevention and Building Safety Commission; 675 IAC 14-4.2-56; filed May 23, 2001, 4:02 p.m.: 24 IR 3046)*

675 IAC 14-4.2-57 Section R404.4.7.2; termite hazards

Authority: IC 22-13-2-2; IC 22-13-2-13

Affected: IC 22-12; IC 22-13; IC 22-14; IC 22-15; IC 36-7

Sec. 57. Delete SECTION R404.4.7.2. *(Fire Prevention and Building Safety Commission; 675 IAC 14-4.2-57; filed May 23, 2001, 4:02 p.m.: 24 IR 3046)*

675 IAC 14-4.2-58 Section R 405.2.3; drainage system

Authority: IC 22-13-2-2; IC 22-13-2-13

Affected: IC 22-12; IC 22-13; IC 22-14; IC 22-15; IC 36-7

Sec. 58. Change SECTION R405.2.3 to read as follows: In other than Group I soils, a sump shall be provided to drain the porous layer and footings. The sump pit shall be a minimum of eighteen (18) inches (four hundred fifty-seven (457) millimeters) in diameter or equivalent and a minimum of twenty-four (24) inches (six hundred ten (610) millimeters) below the bottom of the basement floor. Where a porous layer of gravel, crushed stone, or coarse sand is used between the soil and the concrete floor slab, openings shall be made in the sump to allow drainage of that layer. The sump shall be capable of positive gravity or mechanical drainage to remove any accumulated water. *(Fire Prevention and Building Safety Commission; 675 IAC 14-4.2-58; filed May 23, 2001, 4:02 p.m.: 24 IR 3046)*

675 IAC 14-4.2-59 Section R406.2; concrete and masonry foundation waterproofing

Authority: IC 22-13-2-2; IC 22-13-2-13

Affected: IC 22-12; IC 22-13; IC 22-14; IC 22-15; IC 36-7

Sec. 59. Change the first sentence of SECTION R406.2 to read as follows: Exterior foundation walls that retain earth and enclose habitable or usable spaces located below grade shall be waterproofed with a membrane extending from the top of the footing to the finished grade. *(Fire Prevention and Building Safety Commission; 675 IAC 14-4.2-59; filed May 23, 2001, 4:02 p.m.: 24 IR 3046)*

675 IAC 14-4.2-60 Section R407.3; structural requirement

Authority: IC 22-13-2-2; IC 22-13-2-13

Affected: IC 22-12; IC 22-13; IC 22-14; IC 22-15; IC 36-7

Sec. 60. Add in the first sentence of SECTION R407.3 between “the” and “bottom” “top and”. *(Fire Prevention and Building Safety Commission; 675 IAC 14-4.2-60; filed May 23, 2001, 4:02 p.m.: 24 IR 3046)*

675 IAC 14-4.2-61 Section R408.2; openings for under-floor ventilation

Authority: IC 22-13-2-2; IC 22-13-2-13

Affected: IC 22-12; IC 22-13; IC 22-14; IC 22-15; IC 36-7

Sec. 61. Change EXCEPTION 1 in SECTION R408.2 to read as follows: Ventilation openings to the outdoors are not required if ventilation openings to the interior are provided. *(Fire Prevention and Building Safety Commission; 675 IAC 14-4.2-61; filed May 23, 2001, 4:02 p.m.: 24 IR 3046)*

675 IAC 14-4.2-62 Section R408.3; access

Authority: IC 22-13-2-2; IC 22-13-2-13

Affected: IC 22-12; IC 22-13; IC 22-14; IC 22-15; IC 36-7

Sec. 62. Change SECTION R408.3 to read as follows: An access opening twenty-four (24) inches by eighteen (18) inches (six hundred ten (610) millimeters by four hundred fifty-seven (457) millimeters) shall be provided to the underfloor space. When the underfloor space access opening is through a wall, the opening shall be a minimum of twenty-four (24) inches (six hundred nine (609) millimeters) wide by sixteen (16) inches (four hundred six (406) millimeters) high with an areaway provided for access to the underfloor opening. The areaway shall be not less than twenty-four (24) inches (six hundred nine (609) millimeters) long parallel to the wall at the access opening by sixteen (16) inches (four hundred six (406) millimeters) wide perpendicular to the wall at the center of the access opening. The bottom of the areaway shall be below the threshold of the access opening. The underfloor access opening shall not be under a door. *(Fire Prevention and Building Safety Commission; 675 IAC 14-4.2-62; filed May 23, 2001, 4:02 p.m.: 24 IR 3046)*

675 IAC 14-4.2-63 Section R408.6; flood resistance

Authority: IC 22-13-2-2; IC 22-13-2-13

Affected: IC 22-12; IC 22-13; IC 22-14; IC 22-15; IC 36-7

Sec. 63. Delete the title and text of SECTION R408.6 and substitute to read as follows: Sump pit. All nonhabitable underfloor spaces shall be graded so as to direct any water accumulation to a central collection point. A sump pit shall be installed at that point so that, in the event of excess water accumulation, the installation of a sump pump can be readily accomplished. The sump pit shall be a minimum of eighteen (18) inches (four hundred fifty-seven (457) millimeters) in diameter or equivalent and a minimum of twenty-four (24) inches (six hundred ten (610) millimeters) below the bottom of the crawl space grade. Where a porous layer of gravel, crushed stone, or coarse sand is used in the crawl space, openings shall be made in the sump to allow drainage of that layer. *(Fire Prevention and Building Safety Commission; 675 IAC 14-4.2-63; filed May 23, 2001, 4:02 p.m.: 24 IR 3047)*

675 IAC 14-4.2-64 Section R502.1; general

Authority: IC 22-13-2-2; IC 22-13-2-13

Affected: IC 22-12; IC 22-13; IC 22-14; IC 22-15; IC 36-7

Sec. 64. Delete the last sentence of SECTION R502.1. *(Fire Prevention and Building Safety Commission; 675 IAC 14-4.2-64; filed May 23, 2001, 4:02 p.m.: 24 IR 3047)*

675 IAC 14-4.2-65 Section R502.1.4; prefabricated wood i-joists

Authority: IC 22-13-2-2; IC 22-13-2-13

Affected: IC 22-12; IC 22-13; IC 22-14; IC 22-15; IC 36-7

Sec. 65. Delete SECTION R502.1.4. *(Fire Prevention and Building Safety Commission; 675 IAC 14-4.2-65; filed May 23, 2001, 4:02 p.m.: 24 IR 3047)*

675 IAC 14-4.2-66 Section R502.2.1; decks

Authority: IC 22-13-2-2; IC 22-13-2-13

Affected: IC 22-12; IC 22-13; IC 22-14; IC 22-15; IC 36-7

Sec. 66. Delete in the third sentence of SECTION R502.2.1 “verified during inspection” and substitute “achieved”. *(Fire Prevention and Building Safety Commission; 675 IAC 14-4.2-66; filed May 23, 2001, 4:02 p.m.: 24 IR 3047)*

675 IAC 14-4.2-67 FIGURE R502.2; floor construction

Authority: IC 22-13-2-2; IC 22-13-2-13

Affected: IC 22-12; IC 22-13; IC 22-14; IC 22-15; IC 36-7

Sec. 67. Add a note to the joist between the fireplace and the center girder to read as follows: TAIL JOIST - SEE SECTION R502.10. *(Fire Prevention and Building Safety Commission; 675 IAC 14-4.2-67; filed May 23, 2001, 4:02 p.m.: 24 IR 3047)*

675 IAC 14-4.2-67.5 Table R502.3.2(2); floor joists spans for common lumber species

Authority: IC 22-13-2-2; IC 22-13-2-13

Affected: IC 22-12; IC 22-13; IC 22-14; IC 22-15; IC 36-7

Sec. 67.5. Change Table R502.3.1(2) as follows: Footnote a to Table R502.3.1(2)

Revise “Footnote a” to “note” and relocate above “For SI”. Re-designate Footnote b to Footnote a.

(Fire Prevention and Building Safety Commission; 675 IAC 14-4.2-67.5; filed May 23, 2001, 4:02 p.m.: 24 IR 3047)

675 IAC 14-4.2-68 Section R502.3.3; floor cantilevers

Authority: IC 22-13-2-2; IC 22-13-2-13

Affected: IC 22-12; IC 22-13; IC 22-14; IC 22-15; IC 36-7

**Sec. 68. Add SECTION R502.3.3 after SECTION R502.3.2 to read as follows:
SECTION R502.3.3 FLOOR CANTILEVERS**

Floor cantilever spans shall not exceed the nominal depth of the wood floor joist.

EXCEPTION: Floor cantilevers constructed in accordance with TABLE R502.3.3 shall be permitted when supporting a light-frame bearing wall and roof only. The ratio of backspan to cantilever span shall be at least 3 to 1.
(Fire Prevention and Building Safety Commission; 675 IAC 14-4.2-68; filed May 23, 2001, 4:02 p.m.: 24 IR 3047)

675 IAC 14-4.2-69 Table R502.3.3; cantilever spans for floor joists

Authority: IC 22-13-2-2; IC 22-13-2-13

Affected: IC 22-12; IC 22-13; IC 22-14; IC 22-15; IC 36-7

Sec. 69. Add TABLE R502.3.3 after SECTION R502.3.3 to read as follows:

TABLE R502.3.3

CANTILEVER SPANS FOR FLOOR JOISTS

SUPPORTING LIGHT-FRAME EXTERIOR BEARING WALL AND ROOF ONLY^{a, b, c, f, g, h}

(Floor Live Load ≤ 40 psf, Roof Live Load ≤ 20 psf)

Member and Spacing	Maximum Cantilever Span (Uplift Force at Backspan Support in Lbs.) ^{d, e}											
	Ground Snow Load											
	≤20 psf			30 psf			50 psf			70 psf		
	Roof Width			Roof Width			Roof Width			Roof Width		
	24 ft.	32 ft.	40 ft.	24 ft.	32 ft.	40 ft.	24 ft.	32 ft.	40 ft.	24 ft.	32 ft.	40 ft.
2 × 8 @ 12"	20" (177)	15" (227)		18" (209)								
2 × 10 @ 16"	29" (228)	21" (297)	16" (364)	26" (271)	18" (354)		20" (375)					
2 × 10 @ 12"	36" (166)	26" (219)	20" (270)	34" (198)	22" (263)	16" (324)	26" (277)			19" (356)		
2 × 12 @ 16"		32" (287)	25" (356)	36" (263)	29" (345)	21" (428)	29" (367)	20" (484)		23" (471)		
2 × 12 @ 12"		42" (209)	31" (263)		37" (253)	27" (317)	36" (271)	27" (358)	17" (447)	31" (348)	19" (462)	
2 × 12 @ 8"		48" (136)	45" (169)		48" (164)	38" (206)		40" (233)	26" (294)	36" (230)	29" (304)	18" (379)

For SI: 1 in. = 25.4 mm, 1 psf = 0.0479 kN/m²

Notes:

^a Tabulated values are for clear-span roof supported solely by exterior bearing walls.

^b Spans are based on No. 2 Grade lumber of douglas fir-larch, hem-fir, southern pine, and spruce-fir for repetitive (3 or more) members.

^c Ratio of backspan to cantilever span shall be at least 3:1.

^d Connections capable of resisting the indicated uplift force shall be provided at the backspan support.

^e Uplift force is for a backspan to cantilever span ratio of 3:1. Tabulated uplift values are permitted to be reduced by multiplying by a factor equal to 3 divided by the actual backspan ratio provided (3/backspan ratio).

^f See SECTION R301.2.2.7.1 for additional limitations on cantilevered floor joists for detached one and two family dwellings in Seismic Design Categories D1 and D2 and townhouses in Seismic Design Categories C, D1, and D2.

^g A full-depth rim joist shall be provided at the cantilevered end of the joists.

^h Linear interpolation shall be permitted for building widths and ground snow loads other than shown.

ⁱ Full depth solid blocking required at bearing points.

(Fire Prevention and Building Safety Commission; 675 IAC 14-4.2-69; filed May 23, 2001, 4:02 p.m.: 24 IR 3047)

675 IAC 14-4.2-70 Section R502.11.1; design

Authority: IC 22-13-2-2; IC 22-13-2-13

Affected: IC 22-12; IC 22-13; IC 22-14; IC 22-15; IC 36-7

Sec. 70. Delete the last sentence of SECTION R502.11.1. *(Fire Prevention and Building Safety Commission; 675 IAC 14-4.2-70; filed May 23, 2001, 4:02 p.m.: 24 IR 3048)*

675 IAC 14-4.2-71 Section R502.11.3; alterations to trusses

Authority: IC 22-13-2-2; IC 22-13-2-13

Affected: IC 22-12; IC 22-13; IC 22-14; IC 22-15; IC 36-7

Sec. 71. Change the first sentence of SECTION R502.11.3 to read as follows: Truss members and components shall not be cut, notched, spliced, or otherwise altered in any way without the approval of the building official. *(Fire Prevention and Building Safety Commission; 675 IAC 14-4.2-71; filed May 23, 2001, 4:02 p.m.: 24 IR 3048)*

675 IAC 14-4.2-72 Section R502.11.4; truss design drawings

Authority: IC 22-13-2-2; IC 22-13-2-13

Affected: IC 22-12; IC 22-13; IC 22-14; IC 22-15; IC 36-7

Sec. 72. Delete SECTION R502.11.4 and substitute to read as follows: Truss design drawings shall be provided to the building official as required by the General Administrative Rules (675 IAC 12) for Class 1 structures or by local ordinance for Class 2 structures. *(Fire Prevention and Building Safety Commission; 675 IAC 14-4.2-72; filed May 23, 2001, 4:02 p.m.: 24 IR 3048)*

675 IAC 14-4.2-73 Section R602.1; identification

Authority: IC 22-13-2-2; IC 22-13-2-13

Affected: IC 22-12; IC 22-13; IC 22-14; IC 22-15; IC 36-7

Sec. 73. Delete the last sentence of SECTION R602.1. *(Fire Prevention and Building Safety Commission; 675 IAC 14-4.2-73; filed May 23, 2001, 4:02 p.m.: 24 IR 3049)*

675 IAC 14-4.2-74 FIGURE R602.3(1); typical wall, floor, and roof framing

Authority: IC 22-13-2-2; IC 22-13-2-13

Affected: IC 22-12; IC 22-13; IC 22-14; IC 22-15; IC 36-7

Sec. 74. Change the note in FIGURE R602.3(1) stating “FOR BLOCKING AND BRIDGING - SEE SECTION R502.5” to read “FOR BLOCKING AND BRIDGING—SEE SECTION R502.7.1”. *(Fire Prevention and Building Safety Commission; 675 IAC 14-4.2-74; filed May 23, 2001, 4:02 p.m.: 24 IR 3049)*

675 IAC 14-4.2-75 FIGURE R602.3(2); framing details

Authority: IC 22-13-2-2; IC 22-13-2-13

Affected: IC 22-12; IC 22-13; IC 22-14; IC 22-15; IC 36-7

Sec. 75. Change the note in FIGURE R 602.3(2) stating “CUT PLATE TIED WITH 25 GAGE STEEL ANGLE OR EQUIVALENT” to read “CUT PLATE TIED WITH 24 GAGE STEEL ANGLE A MINIMUM OF 1½" X 1½" WITH 8 - 16d NAILS AT EACH END OR EQUIVALENT”. *(Fire Prevention and Building Safety Commission; 675 IAC 14-4.2-75; filed May 23, 2001, 4:02 p.m.: 24 IR 3049)*

675 IAC 14-4.2-75.5 Table R602.3.1; stud spacing

Authority: IC 22-13-2-2; IC 22-13-2-13

Affected: IC 22-12; IC 22-13; IC 22-14; IC 22-15; IC 36-7

Sec. 75.5. (a) Change the title of Table 602.3.1 to read as follows:

Table R602.3.1 Maximum Allowable Length of Wood Wall Studs Exposed to Wind Speeds of 100 MPH or Less^{b, c}.

(b) Change Table R602.3.1 as follows:

1. Change in the Supporting one floor and a roof >10 line, in the 16, 12, and 8 on-center-spacing (inches) columns “2 x 6” to “2 x 4”.

2. Change in the Supporting two floors and a roof >10 line, in the 12, and 8 on-center-spacing [*sic.*, on-center-spacing] (inches) columns “2 x 6” to “2 x 4”.

(Fire Prevention and Building Safety Commission; 675 IAC 14-4.2-75.5; filed May 23, 2001, 4:02 p.m.: 24 IR 3049)

675 IAC 14-4.2-76 Section R602.6.1; drilling and notching of top plate

Authority: IC 22-13-2-2; IC 22-13-2-13
Affected: IC 22-12; IC 22-13; IC 22-14; IC 22-15; IC 36-7

Sec. 76. Change SECTION R602.6.1 to read as follows: When piping or ductwork is placed in or partly in an exterior wall or interior, braced or load-bearing wall, necessitating the drilling or notching of the top plate by more than fifty percent (50%) of its width, a galvanized metal tie not less than fifty-four thousandths (0.054) inch thick (one and thirty-seven hundredths (1.37) millimeters) (sixteen (16) gage) and one and five-tenths (1.5) inches (thirty-eight (38) millimeters) wide shall be fastened to a plate across and to each side of the opening with not less than eight 16d nails. See Figure R602.6.1.

EXCEPTION: When the entire side of the wall with the notch or drilling is covered by wood structural panel sheathing. (Fire Prevention and Building Safety Commission; 675 IAC 14-4.2-76; filed May 23, 2001, 4:02 p.m.: 24 IR 3049)

675 IAC 14-4.2-77 FIGURE R602.6.1; top plate framing to accommodate piping

Authority: IC 22-13-2-2; IC 22-13-2-13
Affected: IC 22-12; IC 22-13; IC 22-14; IC 22-15; IC 36-7

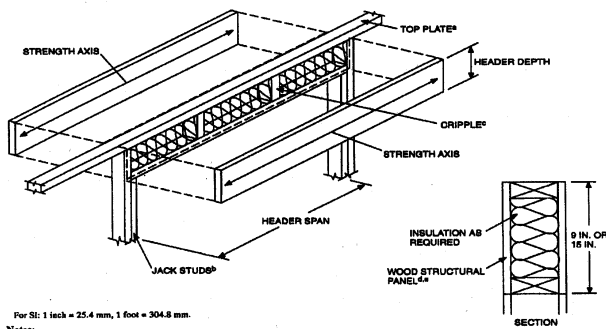
Sec. 77. Change FIGURE R602.6.1 as follows: (a) Change the note stating “NOTCH GREATER THAN 50 PERCENT OF THE PLATE WIDTH” to read “DRILLING OR NOTCHING GREATER THAN 50 PERCENT OF THE PLATE WIDTH”.

(b) Change the note stating “16 GAGE (0.054 IN.) AND 1.5 IN. WIDE METAL TIE ACROSS AND TO EACH SIDE OF THE NOTCH WITH 6-16d NAILS EACH SIDE” to read “16 GAGE (0.059 IN.) AND 1.5 IN. WIDE METAL TIE ACROSS AND TO EACH SIDE OF EACH PLATE OF THE DRILLING OR NOTCHING WITH 8-16d NAILS EACH SIDE”. (Fire Prevention and Building Safety Commission; 675 IAC 14-4.2-77; filed May 23, 2001, 4:02 p.m.: 24 IR 3049)

675 IAC 14-4.2-77.5 Figure R602.7.2; typical wood structural panel box header construction

Authority: IC 22-13-2-2; IC 22-13-2-13
Affected: IC 22-12; IC 22-13; IC 22-14; IC 22-15; IC 36-7

Sec. 77.5. Amend Figure R602.7.2 to read as follows:



For SI: 1 inch = 25.4 mm, 1 foot = 304.8 mm.

Nails:

- The top plate shall be continuous over header.
- Jack studs shall be used for spans over 4 feet.
- Cripple spacing shall be the same as for studs.
- Wood structural panel faces shall be single pieces of 1/2-inch-thick Exposure 1 (exterior glue) or thicker, installed on the interior or exterior or both sides of the header.
- Wood structural panel faces shall be nailed to framing and cripples with 8d common or galvanized box nails spaced 3 inches on center, staggering alternate nails 1/2 inch.
- Galvanized nails shall be hot-dipped or tumbled.

FIGURE R602.7.2
TYPICAL WOOD STRUCTURAL PANEL BOX HEADER CONSTRUCTION

(Fire Prevention and Building Safety Commission; 675 IAC 14-4.2-77.5; filed May 23, 2001, 4:02 p.m.: 24 IR 3049)

675 IAC 14-4.2-78 TABLE R602.10.3; wall bracing

Authority: IC 22-13-2-2; IC 22-13-2-13
Affected: IC 22-12; IC 22-13; IC 22-14; IC 22-15; IC 36-7

Sec. 78. Change footnote (a) in TABLE R602.10.3 by deleting “Section 1615 of the International Building Code” to read “the Indiana Building Code 675 IAC 13”. (Fire Prevention and Building Safety Commission; 675 IAC 14-4.2-78; filed May 23, 2001, 4:02 p.m.: 24 IR 3050)

675 IAC 14-4.2-78.5 Table R603.6(5); header to king stud connection requirements

Authority: IC 22-13-2-2; IC 22-13-2-13

Affected: IC 22-12; IC 22-13; IC 22-14; IC 22-15; IC 36-7

Sec. 78.5. Change Table R603.6(5) footnote d as follows: ^d12-No. 8 screws can be replaced by an up-lift connector which has a capacity of the number of screws multiplied by 164 pounds (e.g., 12-No. 8 screws can be by an up-lift connector whose capacity exceeds 12 by 164 pounds = 1,968 pounds). *(Fire Prevention and Building Safety Commission; 675 IAC 14-4.2-78.5; filed May 23, 2001, 4:02 p.m.: 24 IR 3050)*

675 IAC 14-4.2-79 Section R604.1; identification and grade

Authority: IC 22-13-2-2; IC 22-13-2-13

Affected: IC 22-12; IC 22-13; IC 22-14; IC 22-15; IC 36-7

Sec. 79. Delete from the last sentence of SECTION R604.1 “or certificate of inspection issued by an approved agency”. *(Fire Prevention and Building Safety Commission; 675 IAC 14-4.2-79; filed May 23, 2001, 4:02 p.m.: 24 IR 3050)*

675 IAC 14-4.2-80 Section R605.1; identification and grade

Authority: IC 22-13-2-2; IC 22-13-2-13

Affected: IC 22-12; IC 22-13; IC 22-14; IC 22-15; IC 36-7

Sec. 80. Delete from the first sentence of SECTION R605.1 “or certificate of inspection issued by an approved agency”. *(Fire Prevention and Building Safety Commission; 675 IAC 14-4.2-80; filed May 23, 2001, 4:02 p.m.: 24 IR 3050)*

675 IAC 14-4.2-81 Section R606.1.1; professional registration not required

Authority: IC 22-13-2-2; IC 22-13-2-13

Affected: IC 22-12; IC 22-13; IC 22-14; IC 22-15; IC 36-7

Sec. 81. Delete SECTION R606.1.1. *(Fire Prevention and Building Safety Commission; 675 IAC 14-4.2-81; filed May 23, 2001, 4:02 p.m.: 24 IR 3050)*

675 IAC 14-4.2-82 Section R606.11; seismic requirements

Authority: IC 22-13-2-2; IC 22-13-2-13

Affected: IC 22-12; IC 22-13; IC 22-14; IC 22-15; IC 36-7

Sec. 82. Add at the end of the first sentence of SECTION R606.11 “C₁” between “C,” and “D₁”. *(Fire Prevention and Building Safety Commission; 675 IAC 14-4.2-82; filed May 23, 2001, 4:02 p.m.: 24 IR 3050)*

675 IAC 14-4.2-83 Section R606.11.2; Seismic Design Category C

Authority: IC 22-13-2-2; IC 22-13-2-13

Affected: IC 22-12; IC 22-13; IC 22-14; IC 22-15; IC 36-7

Sec. 83. Change the title and text of SECTION R606.11.2 to read as follows: **Seismic Design Category C and C₁. Structures located in Seismic Design Category C and C₁ shall comply with the requirements of this section.** *(Fire Prevention and Building Safety Commission; 675 IAC 14-4.2-83; filed May 23, 2001, 4:02 p.m.: 24 IR 3050)*

675 IAC 14-4.2-84 FIGURE R606.10(2); requirements for reinforced grouted masonry construction in Seismic Design Category C

Authority: IC 22-13-2-2; IC 22-13-2-13

Affected: IC 22-12; IC 22-13; IC 22-14; IC 22-15; IC 36-7

Sec. 84. Add to the end of the title to FIGURE R606.10(2) “and C₁”. *(Fire Prevention and Building Safety Commission; 675 IAC 14-4.2-84; filed May 23, 2001, 4:02 p.m.: 24 IR 3050)*

675 IAC 14-4.2-84.5 Section R607.1.2; masonry in seismic design categories A, B, C and C₁

Authority: IC 22-13-2-2; IC 22-13-2-13

Affected: IC 22-12; IC 22-13; IC 22-14; IC 22-15; IC 36-7

Sec. 84.5. Change SECTION R607.1.2 to read as follows: R607.1.2 Masonry in Seismic Design Categories A, B, C, and C₁. Mortar for masonry serving as the lateral-force-resisting system in Seismic Design Categories A, B, C, and C₁ shall be Type M, S or N mortar. *(Fire Prevention and Building Safety Commission; 675 IAC 14-4.2-84.5; filed May 23, 2001, 4:02 p.m.: 24 IR 3050)*

675 IAC 14-4.2-85 Section R609.1.5; cleanouts

Authority: IC 22-13-2-2; IC 22-13-2-13

Affected: IC 22-12; IC 22-13; IC 22-14; IC 22-15; IC 36-7

Sec. 85. Change SECTION R609.1.5 to read as follows: Cleanouts shall be provided as specified in this section. The cleanouts shall be sealed before grouting. *(Fire Prevention and Building Safety Commission; 675 IAC 14-4.2-85; filed May 23, 2001, 4:02 p.m.: 24 IR 3050)*

675 IAC 14-4.2-85.5 Section R609.2.2; grout spaces

Authority: IC 22-13-2-2; IC 22-13-2-13

Affected: IC 22-12; IC 22-13; IC 22-14; IC 22-15; IC 36-7

Sec. 85.5. Change in SECTION R609.2.2 the word “course” to “coarse”. *(Fire Prevention and Building Safety Commission; 675 IAC 14-4.2-85.5; filed May 23, 2001, 4:02 p.m.: 24 IR 3050)*

675 IAC 14-4.2-86 Section R609.4.1; construction

Authority: IC 22-13-2-2; IC 22-13-2-13

Affected: IC 22-12; IC 22-13; IC 22-14; IC 22-15; IC 36-7

Sec. 86. Delete in SECTION R609.4.1, item number 4, the following: “and special inspection during grouting shall be required”. *(Fire Prevention and Building Safety Commission; 675 IAC 14-4.2-86; filed May 23, 2001, 4:02 p.m.: 24 IR 3051)*

675 IAC 14-4.2-87 Section R611.1; general

Authority: IC 22-13-2-2; IC 22-13-2-13

Affected: IC 22-12; IC 22-13; IC 22-14; IC 22-15; IC 36-7

Sec. 87. Delete the last sentence of SECTION R611.1. *(Fire Prevention and Building Safety Commission; 675 IAC 14-4.2-87; filed May 23, 2001, 4:02 p.m.: 24 IR 3051)*

675 IAC 14-4.2-88 Section R702.4.2; gypsum backer

Authority: IC 22-13-2-2; IC 22-13-2-13

Affected: IC 22-12; IC 22-13; IC 22-14; IC 22-15; IC 36-7

Sec. 88. Change SECTION R702.4.2 to read as follows: Gypsum board utilized as the base or backer board for adhesive application of ceramic tile or other nonabsorbent finish material shall conform with ASTM C630 or C1178. Water-resistant gypsum backing board shall be permitted to be used on ceilings where framing spacing does not exceed twelve (12) inches (three hundred five (305) millimeters) on center for one-half (½) inch thick (twelve and seven-tenths (12.7) millimeters) or sixteen (16) inches (four hundred six (406) millimeters) for five-eighths (⅝) inch thick (fifteen and nine-tenths (15.9) millimeters) gypsum board. Water-resistant gypsum board shall not be installed over a vapor retarder or in a shower or tub compartment. All cut or exposed edges, including those at wall intersections, shall be sealed as recommended by the manufacturer. *(Fire Prevention and Building Safety Commission; 675 IAC 14-4.2-88; filed May 23, 2001, 4:02 p.m.: 24 IR 3051)*

675 IAC 14-4.2-89 Section R 703.4; attachments

Authority: IC 22-13-2-2; IC 22-13-2-13

Affected: IC 22-12; IC 22-13; IC 22-14; IC 22-15; IC 36-7

Sec. 89. Change SECTION R703.4 to read as follows: All wall coverings shall be securely fastened in accordance with Table R703.4 or with other approved aluminum, stainless steel, zinc-coated, or other approved corrosion-resistive fasteners. *(Fire*

675 IAC 14-4.2-89.5 Section R703.7; stone and masonry veneer, general

Authority: IC 22-13-2-2; IC 22-13-2-13

Affected: IC 22-12; IC 22-13; IC 22-14; IC 22-15; IC 36-7

Sec. 89.5. Change in SECTION R703.7 to read as follows:

R703.7 Stone and masonry veneer, general. All stone and masonry veneer shall be installed in accordance with this chapter, Table R703.4, Figure R703.7 or the alternate masonry veneer wall details, Figure R703.3A. Such veneers installed over a backing of wood or cold-formed steel shall be limited to the first story above grade and shall not exceed 5 inches (127 mm) in thickness.

EXCEPTIONS: 1. In Seismic Design Categories A and B, exterior masonry veneer with a backing of wood or cold-formed steel framing shall not exceed 30 feet (9,144 mm) in height above the noncombustible foundation, with an additional 8 feet (2,348 mm) permitted for ends.

2. In Seismic Design Categories C and C₁, exterior masonry veneer with a backing of wood or cold-formed steel framing shall not exceed 30 feet (9,144 mm) in height above the noncombustible foundation, with an additional 8 feet (2,348 mm) permitted for gabled ends. In other than the topmost story, the length of bracing shall be 1.5 times the length otherwise required in Chapter 6.

3. Where type S mortar is used throughout, the alternate masonry veneer wall detail Figure R703.7A may be used.

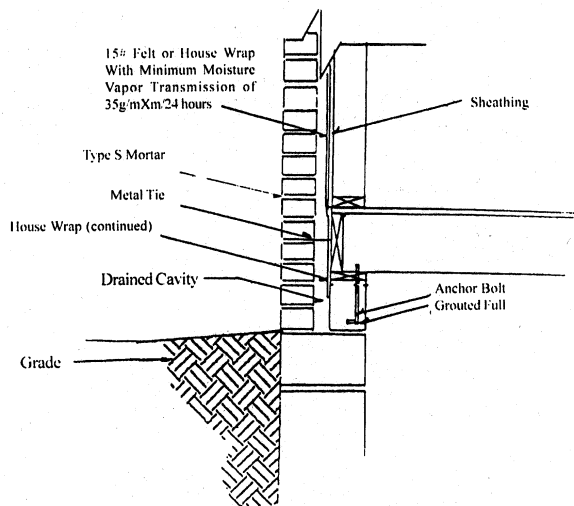


Figure R703.7A
ALTERNATE MASONRY VENEER WALL DETAILS

675 IAC 14-4.2-89.6 Figure R703.7; stone and masonry veneer, general

Authority: IC 22-13-2-2; IC 22-13-2-13

Affected: IC 22-12; IC 22-13; IC 22-14; IC 22-15; IC 36-7

Sec. 89.6. Amend Figure R703.7 by modifying the flashing detail to show the horizontal flashing between the veneer and the top of the top course of the foundation wall and delete the horizontal flashing between the sill plate and the top course of the foundation wall. (Fire Prevention and Building Safety Commission; 675 IAC 14-4.2-89.6; filed May 23, 2001, 4:02 p.m.: 24 IR 3051)

675 IAC 14-4.2-89.7 Section R703.3.5; flashing

Authority: IC 22-13-2-2; IC 22-13-2-13

Affected: IC 22-12; IC 22-13; IC 22-14; IC 22-15; IC 36-7

Sec. 89.7. Add an exception to the end of Section R703.7.5 to read as follows: **EXCEPTION: Where type S mortar is used throughout the masonry veneer construction, Figure R703.7A may be used.** (*Fire Prevention and Building Safety Commission; 675 IAC 14-4.2-89.7; filed May 23, 2001, 4:02 p.m.: 24 IR 3052*)

675 IAC 14-4.2-89.8 Section R703.7.6; weepholes

Authority: IC 22-13-2-2; IC 22-13-2-13

Affected: IC 22-12; IC 22-13; IC 22-14; IC 22-15; IC 36-7

Sec. 89.8. Add an exception to the end of Section R703.7.6 to read as follows: **EXCEPTION: Where type S mortar is used throughout the masonry veneer construction, Figure R703.7A may be used.** (*Fire Prevention and Building Safety Commission; 675 IAC 14-4.2-89.8; filed May 23, 2001, 4:02 p.m.: 24 IR 3052*)

675 IAC 14-4.2-89.9 Section R703.7.2.1; support by a steel angle

Authority: IC 22-13-2-2; IC 22-13-2-13

Affected: IC 22-12; IC 22-13; IC 22-14; IC 22-15; IC 36-7

Sec. 89.9. Delete Section R703.7.2.1. (*Fire Prevention and Building Safety Commission; 675 IAC 14-4.2-89.9; filed May 23, 2001, 4:02 p.m.: 24 IR 3052*)

675 IAC 14-4.2-89.10 Section R703.7.2.2; support by roof construction

Authority: IC 22-13-2-2; IC 22-13-2-13

Affected: IC 22-12; IC 22-13; IC 22-14; IC 22-15; IC 36-7

Sec. 89.10. Delete Section R703.7.2.2. (*Fire Prevention and Building Safety Commission; 675 IAC 14-4.2-89.10; filed May 23, 2001, 4:02 p.m.: 24 IR 3052*)

675 IAC 14-4.2-89.11 Section R703.8; flashing

Authority: IC 22-13-2-2; IC 22-13-2-13

Affected: IC 22-12; IC 22-13; IC 22-14; IC 22-15; IC 36-7

Sec. 89.11. Add an exception to the end of Section R703.8 to read as follows: **EXCEPTION: Where type S mortar is used throughout the masonry veneer construction and the top of all windows and doors have been made leakproof, except that self-flashing windows having a continuous lap of not less than one and one-eighth [sic.] (1⅛) inches (28 mm) over the sheathing material around the perimeter of the opening, including corners, do not require additional flashing and jamb flashing may also be omitted when specifically allowed by manufacturer's installation instructions, and a house wrap or 15:4 felt has been applied, Figure R703.7A may be used.** (*Fire Prevention and Building Safety Commission; 675 IAC 14-4.2-89.11; filed May 23, 2001, 4:02 p.m.: 24 IR 3052; errata filed Jun 12, 2001, 2:18 p.m.: 24 IR 3070*)

675 IAC 14-4.2-90 Section R703.8; flashing

Authority: IC 22-13-2-2; IC 22-13-2-13

Affected: IC 22-12; IC 22-13; IC 22-14; IC 22-15; IC 36-7

Sec. 90. Delete in SECTION R703.8, item number 1, “approved by the building official” and substitute “allowed by the manufacturer's installation instructions”. (*Fire Prevention and Building Safety Commission; 675 IAC 14-4.2-90; filed May 23, 2001, 4:02 p.m.: 24 IR 3052*)

675 IAC 14-4.2-91 Section R802.1; identification and grade

Authority: IC 22-13-2-2; IC 22-13-2-13

Affected: IC 22-12; IC 22-13; IC 22-14; IC 22-15; IC 36-7

Sec. 91. Delete the last sentence of SECTION R802.1. (*Fire Prevention and Building Safety Commission; 675 IAC 14-4.2-91; filed May 23, 2001, 4:02 p.m.: 24 IR 3052*)

675 IAC 14-4.2-92 Section R802.10.1; truss design drawings

Authority: IC 22-13-2-2; IC 22-13-2-13

Affected: IC 22-12; IC 22-13; IC 22-14; IC 22-15; IC 36-7

Sec. 92. Delete SECTION R802.10.1 and substitute to read as follows: Truss design drawings shall be provided to the building official as required by the General Administrative Rules (675 IAC 12) for Class 1 structures or by local ordinance for Class 2 structures. (Fire Prevention and Building Safety Commission; 675 IAC 14-4.2-92; filed May 23, 2001, 4:02 p.m.: 24 IR 3052)

675 IAC 14-4.2-93 Section R802.10.2; design

Authority: IC 22-13-2-2; IC 22-13-2-13

Affected: IC 22-12; IC 22-13; IC 22-14; IC 22-15; IC 36-7

Sec. 93. Delete the last sentence of SECTION R802.10.2. (Fire Prevention and Building Safety Commission; 675 IAC 14-4.2-93; filed May 23, 2001, 4:02 p.m.: 24 IR 3052)

675 IAC 14-4.2-94 Section R802.10.3; bracing

Authority: IC 22-13-2-2; IC 22-13-2-13

Affected: IC 22-12; IC 22-13; IC 22-14; IC 22-15; IC 36-7

Sec. 94. Change the first sentence of SECTION R802.10.3 to read as follows: Trusses shall be braced to prevent rotation and to provide lateral stability. (Fire Prevention and Building Safety Commission; 675 IAC 14-4.2-94; filed May 23, 2001, 4:02 p.m.: 24 IR 3052)

675 IAC 14-4.2-95 Section R802.10.4; alterations to trusses

Authority: IC 22-13-2-2; IC 22-13-2-13

Affected: IC 22-12; IC 22-13; IC 22-14; IC 22-15; IC 36-7

Sec. 95. Change the first sentence of SECTION R802.10.4 to read as follows: Truss members shall not be cut, notched, drilled, spliced, or otherwise altered in any way unless approved by the building official. (Fire Prevention and Building Safety Commission; 675 IAC 14-4.2-95; filed May 23, 2001, 4:02 p.m.: 24 IR 3052)

675 IAC 14-4.2-96 Section R802.11; roof tie-down

Authority: IC 22-13-2-2; IC 22-13-2-13

Affected: IC 22-12; IC 22-13; IC 22-14; IC 22-15; IC 36-7

Sec. 96. (a) Change the title to SECTION R802.11 to read as follows: R802.11 Roof tie-down. R802.11.1 Roof tie-down.

(b) Change the last sentence of SECTION R802.11.1 to read as follows: The base wind uplift pressure on roof assemblies shall be determined using an effective wind area of one hundred (100) square feet (nine and three-tenths (9.3) m²) and Zone 1 in TABLE R301.2(2) and then adjusted for height and exposure as required by TABLE R301.2(3) to determine the actual site specific wind uplift pressure. (Fire Prevention and Building Safety Commission; 675 IAC 14-4.2-96; filed May 23, 2001, 4:02 p.m.: 24 IR 3053)

675 IAC 14-4.2-97 Section R803.2.1; identification and grade

Authority: IC 22-13-2-2; IC 22-13-2-13

Affected: IC 22-12; IC 22-13; IC 22-14; IC 22-15; IC 36-7

Sec. 97. Delete from the first sentence of SECTION R803.2.1 “or certificate of inspection issued by an approved agency”. (Fire Prevention and Building Safety Commission; 675 IAC 14-4.2-97; filed May 23, 2001, 4:02 p.m.: 24 IR 3053)

675 IAC 14-4.2-98 Section R903.4.1; overflow drains and scuppers

Authority: IC 22-13-2-2; IC 22-13-2-13

Affected: IC 22-12; IC 22-13; IC 22-14; IC 22-15; IC 36-7

Sec. 98. Delete the last paragraph of SECTION R903.4.1. (Fire Prevention and Building Safety Commission; 675 IAC 14-4.2-98; filed May 23, 2001, 4:02 p.m.: 24 IR 3053)

675 IAC 14-4.2-99 Section R904.3; material specifications and physical characteristics

Authority: IC 22-13-2-2; IC 22-13-2-13

Affected: IC 22-12; IC 22-13; IC 22-14; IC 22-15; IC 36-7

Sec. 99. Delete the last sentence of SECTION R904.3. (*Fire Prevention and Building Safety Commission; 675 IAC 14-4.2-99; filed May 23, 2001, 4:02 p.m.: 24 IR 3053*)

675 IAC 14-4.2-100 Section R907.1; general

Authority: IC 22-13-2-2; IC 22-13-2-13

Affected: IC 22-12; IC 22-13; IC 22-14; IC 22-15; IC 36-7

Sec. 100. Change SECTION R907.1 to read as follows: Materials and methods of application used for recovering or replacing an existing roof shall comply with the requirements of this chapter. Roof coverings shall be designed and installed in accordance with this code and the approved manufacturer's installation instructions such that the roof covering shall serve to protect the building or structure.

EXCEPTION: Reroofing shall not be required to meet the minimum design slope requirement of one-fourth ($\frac{1}{4}$) vertical in twelve (12) units horizontal (two percent (2%) slope) in SECTION R905 for roofs that provide positive roof drainage. (*Fire Prevention and Building Safety Commission; 675 IAC 14-4.2-100; filed May 23, 2001, 4:02 p.m.: 24 IR 3053*)

675 IAC 14-4.2-101 Section R907.3; recovering versus replacement

Authority: IC 22-13-2-2; IC 22-13-2-13

Affected: IC 22-12; IC 22-13; IC 22-14; IC 22-15; IC 36-7

Sec. 101. Change in SECTION R907.3, item number 3, "two" to "three". (*Fire Prevention and Building Safety Commission; 675 IAC 14-4.2-101; filed May 23, 2001, 4:02 p.m.: 24 IR 3053*)

675 IAC 14-4.2-102 Section R1001.6; termination

Authority: IC 22-13-2-2; IC 22-13-2-13

Affected: IC 22-12; IC 22-13; IC 22-14; IC 22-15; IC 36-7

Sec. 102. Add in SECTION R1001.6 the following: (a) Add "highest" after "the" and before "point".

(b) Add a paragraph to the end of SECTION R1001.6 to read: See FIGURE R1001.6. (*Fire Prevention and Building Safety Commission; 675 IAC 14-4.2-102; filed May 23, 2001, 4:02 p.m.: 24 IR 3053*)

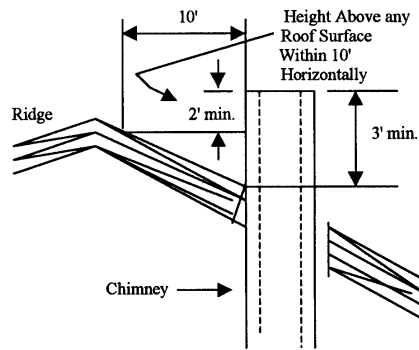
675 IAC 14-4.2-103 FIGURE R1001.6; chimney termination

Authority: IC 22-13-2-2; IC 22-13-2-13

Affected: IC 22-12; IC 22-13; IC 22-14; IC 22-15; IC 36-7

Sec. 103. Add FIGURE R1001.6 as follows:

**FIGURE R1001.6
Chimney Termination**



(Fire Prevention and Building Safety Commission; 675 IAC 14-4.2-103; filed May 23, 2001, 4:02 p.m.: 24 IR 3053)

675 IAC 14-4.2-104 Section R1001.6.1; spark arrestors

Authority: IC 22-13-2-2; IC 22-13-2-13

Affected: IC 22-12; IC 22-13; IC 22-14; IC 22-15; IC 36-7

Sec. 104. Add SECTION R1001.6.1 after SECTION R1001.6 to read as follows: **R1001.6.1 Spark arrestors.** When a spark arrestor is installed on a masonry chimney, the spark arrestor shall meet all of the following requirements:

1. The net-free area of the arrestor shall be not less than four (4) times the net-free area of the outlet of the chimney flue it serves.
2. The arrestor screen shall have heat and corrosion resistance equivalent to nineteen (19) gage galvanized steel or twenty-four (24) gage stainless steel.
3. Openings shall not permit the passage of spheres having a diameter larger than one-half ($\frac{1}{2}$) inch nor block the passage of spheres having diameter of less than three-eighths ($\frac{3}{8}$) inch.
4. The spark screen shall be accessible for cleaning and the screen or chimney cap shall be removable to allow for cleaning of the chimney flue.

(Fire Prevention and Building Safety Commission; 675 IAC 14-4.2-104; filed May 23, 2001, 4:02 p.m.: 24 IR 3054)

675 IAC 14-4.2-105 Section R1003.3; seismic reinforcing

Authority: IC 22-13-2-2; IC 22-13-2-13

Affected: IC 22-12; IC 22-13; IC 22-14; IC 22-15; IC 36-7

Sec. 105. Change the first sentence of SECTION R1003.3 to read as follows: **Masonry or concrete chimneys in Seismic Design Category C₁ shall be reinforced.** (Fire Prevention and Building Safety Commission; 675 IAC 14-4.2-105; filed May 23, 2001, 4:02 p.m.: 24 IR 3054)

675 IAC 14-4.2-105.5 Section R1003; seismic anchorage

Authority: IC 22-13-2-2; IC 22-13-2-13

Affected: IC 22-12; IC 22-13; IC 22-14; IC 22-15; IC 36-7

Sec. 105.5. Change SECTION R1003.4 by deleting **D₁** and **D₂** and substituting **C₁**. (Fire Prevention and Building Safety Commission; 675 IAC 14-4.2-105.5; filed May 23, 2001, 4:02 p.m.: 24 IR 3054)

675 IAC 14-4.2-106 Section R1005.1; exterior air

Authority: IC 22-13-2-2; IC 22-13-2-13

Affected: IC 22-12; IC 22-13; IC 22-14; IC 22-15; IC 36-7

Sec. 106. Delete in SECTION R1005.1 “unless the room is mechanically ventilated and controlled so that the indoor pressure is neutral or positive.”. (Fire Prevention and Building Safety Commission; 675 IAC 14-4.2-106; filed May 23, 2001, 4:02 p.m.: 24 IR 3054)

675 IAC 14-4.2-107 Chapter 11; energy efficiency

Authority: IC 22-13-2-2; IC 22-13-2-13

Affected: IC 22-12; IC 22-13; IC 22-14; IC 22-15; IC 36-7

Sec. 107. Delete Chapter 11 in its entirety and substitute the following: See the Indiana Energy Conservation Code, 675 IAC 19. *(Fire Prevention and Building Safety Commission; 675 IAC 14-4.2-107; filed May 23, 2001, 4:02 p.m.: 24 IR 3054; errata filed Jun 12, 2001, 2:18 p.m.: 24 IR 3070)*

675 IAC 14-4.2-108 Section M1201.1; scope

Authority: IC 22-13-2-2; IC 22-13-2-13

Affected: IC 22-12; IC 22-13; IC 22-14; IC 22-15; IC 36-7

Sec. 108. Change SECTION M1201.1 to read as follows: The provisions of CHAPTERS 1, 2, and 12 through 24 shall regulate the design, installation, and alteration of any part of the permanent heating, ventilating, and air conditioning for a Class 1 structure-townhouse or a Class 2 structure-1 or 2 family dwelling. *(Fire Prevention and Building Safety Commission; 675 IAC 14-4.2-108; filed May 23, 2001, 4:02 p.m.: 24 IR 3054)*

675 IAC 14-4.2-109 Section M1201.2; application

Authority: IC 22-13-2-2; IC 22-13-2-13

Affected: IC 22-12; IC 22-13; IC 22-14; IC 22-15; IC 36-7

Sec. 109. Delete SECTION M1201.2. *(Fire Prevention and Building Safety Commission; 675 IAC 14-4.2-109; filed May 23, 2001, 4:02 p.m.: 24 IR 3054; errata filed Jun 12, 2001, 2:18 p.m.: 24 IR 3070)*

675 IAC 14-4.2-110 Section M1202; existing mechanical systems

Authority: IC 22-13-2-2; IC 22-13-2-13

Affected: IC 22-12; IC 22-13; IC 22-14; IC 22-15; IC 36-7

Sec. 110. Delete SECTION M1202 and substitute to read as follows: For existing installations see Chapter 1 and the General Administrative Rules (675 IAC 12). *(Fire Prevention and Building Safety Commission; 675 IAC 14-4.2-110; filed May 23, 2001, 4:02 p.m.: 24 IR 3054; errata filed Jun 12, 2001, 2:18 p.m.: 24 IR 3070)*

675 IAC 14-4.2-111 Section M1303.1; label information

Authority: IC 22-13-2-2; IC 22-13-2-13

Affected: IC 22-12; IC 22-13; IC 22-14; IC 22-15; IC 36-7

Sec. 111. Change in SECTION M1303.1, item number 4 “approval” to “acceptance”. *(Fire Prevention and Building Safety Commission; 675 IAC 14-4.2-111; filed May 23, 2001, 4:02 p.m.: 24 IR 3054; errata filed Jun 12, 2001, 2:18 p.m.: 24 IR 3070)*

675 IAC 14-4.2-112 Section M1307.3.1; protection from impact

Authority: IC 22-13-2-2; IC 22-13-2-13

Affected: IC 22-12; IC 22-13; IC 22-14; IC 22-15; IC 36-7

Sec. 112. Delete SECTION M1307.3.1. *(Fire Prevention and Building Safety Commission; 675 IAC 14-4.2-112; filed May 23, 2001, 4:02 p.m.: 24 IR 3054; errata filed Jun 12, 2001, 2:18 p.m.: 24 IR 3070)*

675 IAC 14-4.2-113 Section M1501.3; length limitation

Authority: IC 22-13-2-2; IC 22-13-2-13

Affected: IC 22-12; IC 22-13; IC 22-14; IC 22-15; IC 36-7

Sec. 113. Change in the first sentence of SECTION M1501.3 “25 feet (7620 mm)” to read “thirty-five (35) feet”. *(Fire Prevention and Building Safety Commission; 675 IAC 14-4.2-113; filed May 23, 2001, 4:02 p.m.: 24 IR 3055; errata filed Jun 12, 2001, 2:18 p.m.: 24 IR 3070)*

675 IAC 14-4.2-114 Section M1503.1; installation of microwave oven over a cooking appliance

Authority: IC 22-13-2-2; IC 22-13-2-13
Affected: IC 22-12; IC 22-13; IC 22-14; IC 22-15; IC 36-7

Sec. 114. Delete SECTION M1503.1. *(Fire Prevention and Building Safety Commission; 675 IAC 14-4.2-114; filed May 23, 2001, 4:02 p.m.: 24 IR 3055; errata filed Jun 12, 2001, 2:18 p.m.: 24 IR 3070)*

675 IAC 14-4.2-115 Chapter 19; special fuel-burning equipment
Authority: IC 22-13-2-2; IC 22-13-2-13
Affected: IC 22-12; IC 22-13; IC 22-14; IC 22-15; IC 36-7

Sec. 115. Delete Chapter 19. *(Fire Prevention and Building Safety Commission; 675 IAC 14-4.2-115; filed May 23, 2001, 4:02 p.m.: 24 IR 3055; errata filed Jun 12, 2001, 2:18 p.m.: 24 IR 3070)*

675 IAC 14-4.2-116 Section M2001; boilers
Authority: IC 22-13-2-2; IC 22-13-2-13
Affected: IC 22-12; IC 22-13-2-9; IC 22-14; IC 22-15; IC 36-7

Sec. 116. Add SECTION M2001.1.2 to the end of SECTION M2001 to read as follows: Boilers and water heaters regulated by the Boiler and Pressure Vessel Rules Board (680 IAC 2) under IC 22-13-2-9; are not regulated by this code. *(Fire Prevention and Building Safety Commission; 675 IAC 14-4.2-116; filed May 23, 2001, 4:02 p.m.: 24 IR 3055; errata filed Jun 12, 2001, 2:18 p.m.: 24 IR 3070)*

675 IAC 14-4.2-117 Section M2005.5; anchorage of water heaters in Seismic Design Category C₁
Authority: IC 22-13-2-2; IC 22-13-2-13
Affected: IC 22-12; IC 22-13; IC 22-14; IC 22-15; IC 36-7

Sec. 117. Add SECTION M2005.5 to the end of SECTION M2005 to read as follows: M2005.5 Anchorage of Water Heaters in Seismic Design Category C₁. In Seismic Design Category C₁, all water heaters shall be anchored or fastened to resist horizontal displacement due to earthquake motion as provided in SECTION M1307.2. *(Fire Prevention and Building Safety Commission; 675 IAC 14-4.2-117; filed May 23, 2001, 4:02 p.m.: 24 IR 3055; errata filed Jun 12, 2001, 2:18 p.m.: 24 IR 3070)*

675 IAC 14-4.2-118 Section M2006; pool heaters
Authority: IC 22-13-2-2; IC 22-13-2-13
Affected: IC 22-12; IC 22-13; IC 22-14; IC 22-15; IC 36-7

Sec. 118. Delete SECTION M2006. *(Fire Prevention and Building Safety Commission; 675 IAC 14-4.2-118; filed May 23, 2001, 4:02 p.m.: 24 IR 3055; errata filed Jun 12, 2001, 2:18 p.m.: 24 IR 3070)*

675 IAC 14-4.2-119 Section M2201.3; underground tanks
Authority: IC 22-13-2-2; IC 22-13-2-13
Affected: IC 22-12; IC 22-13; IC 22-14; IC 22-15; IC 36-7

Sec. 119. Delete SECTION M2201.3 and substitute to read as follows: Excavations for underground tanks shall not undermine the foundations of existing structures.

Underground tanks shall be set on firm foundations and surrounded with at least six (6) inches (one hundred fifty-two and four-tenths (152.4) millimeters) of noncorrosive inert material, such as clean sand or gravel well-tamped in place or in accordance with the manufacturer's installation instructions. Tanks shall be covered with a minimum of two (2) feet (six hundred nine and six-tenths (609.6) millimeters) of earth or shall be covered by not less than one (1) foot (three hundred four and eight-tenths (304.8) millimeters) of earth, on top of which shall be placed a slab of reinforced concrete not less than four (4) inches (one hundred one and six-tenths (101.6) millimeters) thick.

When underground tanks are, or are likely to be, subjected to traffic, they shall be protected against damage from vehicles passing over them by at least three (3) feet (nine hundred fourteen and four-tenths (914.4) millimeters) of earth cover, or eighteen (18) inches (four hundred fifty-seven and two-tenths (457.2) millimeters) of well-tamped earth plus six (6) inches (one

hundred fifty-two and four-tenths (152.4) millimeters) of reinforced concrete, or eight (8) inches (two hundred three and two-tenths (203.2) millimeters) of asphaltic concrete. When asphaltic or reinforced concrete paving is used as part of the protection, it shall extend at least one (1) foot (three hundred four and eight-tenths (304.8) millimeters) horizontally beyond the outline of the tank in all directions.

The clearance from the tank to the nearest wall of a basement, pit, or property line shall not be less than one (1) foot (three hundred five (305) millimeters).

Corrosion protection shall be provided in accordance with SECTION M2203.7. (*Fire Prevention and Building Safety Commission; 675 IAC 14-4.2-119; filed May 23, 2001, 4:02 p.m.: 24 IR 3055; errata filed Jun 12, 2001, 2:18 p.m.: 24 IR 3070*)

675 IAC 14-4.2-120 Section M2301.1; general

Authority: IC 22-13-2-2; IC 22-13-2-13

Affected: IC 22-12; IC 22-13; IC 22-14; IC 22-15; IC 36-7

Sec. 120. Change SECTION M2301.1 to read as follows: This section provides for construction, installation, and alteration of equipment and systems utilizing solar energy to provide space heating or cooling and hot water heating. (*Fire Prevention and Building Safety Commission; 675 IAC 14-4.2-120; filed May 23, 2001, 4:02 p.m.: 24 IR 3055; errata filed Jun 12, 2001, 2:18 p.m.: 24 IR 3070*)

675 IAC 14-4.2-121 Section G2401.1; application

Authority: IC 22-13-2-2; IC 22-13-2-13

Affected: IC 22-12; IC 22-13; IC 22-14; IC 22-15; IC 36-7

Sec. 121. (a) Delete in the second sentence of the second paragraph of SECTION G2401.1 “, inspection, operation, and maintenance”, and add “and” before “testing” and delete the comma after “installation”.

(b) Change in item number 3 of SECTION G2401.1 “401.1.1” to read “G2411.1.1”. (*Fire Prevention and Building Safety Commission; 675 IAC 14-4.2-121; filed May 23, 2001, 4:02 p.m.: 24 IR 3056; errata filed Jun 12, 2001, 2:18 p.m.: 24 IR 3070*)

675 IAC 14-4.2-122 Section G2403; general definitions

Authority: IC 22-13-2-2; IC 22-13-2-13

Affected: IC 22-12; IC 22-13-2-9; IC 22-14; IC 22-15; IC 36-7

Sec. 122. Change SECTION G2403 as follows: (a) Change the title to read as follows: SECTION G2403(202) GENERAL DEFINITIONS FOR THE PURPOSE OF CHAPTER 24 ONLY.

(b) Add to the end of the definition of BOILER, LOW PRESSURE as follows: This definition is not applicable to boilers regulated by the Boiler and Pressure Vessel Rules Board (680 IAC 2) under IC 22-13-2-9.

(c) Delete the definition of CODE.

(d) Delete the definition of CODE OFFICIAL and substitute to read as follows: See BUILDING OFFICIAL in SECTION R202.

(e) Delete the definition of HAZARDOUS LOCATION.

(f) Add after “MODULATING”, NFPA 58 see 675 IAC 22-2.2-14.

(g) Add after “UNIT HEATER”, UNUSUALLY TIGHT CONSTRUCTION, see SECTION R202. (*Fire Prevention and Building Safety Commission; 675 IAC 14-4.2-122; filed May 23, 2001, 4:02 p.m.: 24 IR 3056; errata filed Jun 12, 2001, 2:18 p.m.: 24 IR 3070*)

675 IAC 14-4.2-123 Section G2404.7; flood hazard

Authority: IC 22-13-2-2; IC 22-13-2-13

Affected: IC 22-12; IC 22-13; IC 22-14; IC 22-15; IC 36-7

Sec. 123. Delete SECTION G2404.7 and substitute to read as follows: See local ordinance. *(Fire Prevention and Building Safety Commission; 675 IAC 14-4.2-123; filed May 23, 2001, 4:02 p.m.: 24 IR 3056; errata filed Jun 12, 2001, 2:18 p.m.: 24 IR 3070)*

675 IAC 14-4.2-124 Section G2405.1; structural safety

Authority: IC 22-13-2-2; IC 22-13-2-13

Affected: IC 22-12; IC 22-13; IC 22-14; IC 22-15; IC 36-7

Sec. 124. Delete in the second sentence of SECTION G2405.1 “repairing” and substitute “altering”. *(Fire Prevention and Building Safety Commission; 675 IAC 14-4.2-124; filed May 23, 2001, 4:02 p.m.: 24 IR 3056; errata filed Jun 12, 2001, 2:18 p.m.: 24 IR 3070)*

675 IAC 14-4.2-125 Section G2407.4 and Section G2407.5; process air and ventilation air

Authority: IC 22-13-2-2; IC 22-13-2-13

Affected: IC 22-12; IC 22-13; IC 22-14; IC 22-15; IC 36-7

Sec. 125. Delete SECTIONS G2407.4 and G2407.5. *(Fire Prevention and Building Safety Commission; 675 IAC 14-4.2-125; filed May 23, 2001, 4:02 p.m.: 24 IR 3056; errata filed Jun 12, 2001, 2:18 p.m.: 24 IR 3070)*

675 IAC 14-4.2-126 Section G2408.1; general

Authority: IC 22-13-2-2; IC 22-13-2-13

Affected: IC 22-12; IC 22-13; IC 22-14; IC 22-15; IC 36-7

Sec. 126. (a) Delete at the end of the first paragraph of SECTION G2408.1 “at the time of inspection”.

(b) Delete at the end of the second paragraph of SECTION G2408.1 “and the requirements determined by the code official”.

(c) Add in the second paragraph of SECTION G2408.1 after “instructions,” and before “the”, “and”. *(Fire Prevention and Building Safety Commission; 675 IAC 14-4.2-126; filed May 23, 2001, 4:02 p.m.: 24 IR 3056; errata filed Jun 12, 2001, 2:18 p.m.: 24 IR 3070)*

675 IAC 14-4.2-127 Section G2408.3; private garages

Authority: IC 22-13-2-2; IC 22-13-2-13

Affected: IC 22-12; IC 22-13; IC 22-14; IC 22-15; IC 36-7

Sec. 127. Delete SECTION G2408.3. *(Fire Prevention and Building Safety Commission; 675 IAC 14-4.2-127; filed May 23, 2001, 4:02 p.m.: 24 IR 3056; errata filed Jun 12, 2001, 2:18 p.m.: 24 IR 3070)*

675 IAC 14-4.2-128 Section G2411.1; scope

Authority: IC 22-13-2-2; IC 22-13-2-13

Affected: IC 22-12; IC 22-13; IC 22-14; IC 22-15; IC 36-7

Sec. 128. Change SECTION G2411.1 to read as follows: This chapter shall govern the design, installation, and modification of piping systems. The applicability of this code to piping systems extends from the point of delivery to the connections with the equipment and includes the design, materials, components, fabrication, assembly, installation, and testing of such piping systems. *(Fire Prevention and Building Safety Commission; 675 IAC 14-4.2-128; filed May 23, 2001, 4:02 p.m.: 24 IR 3056; errata filed Jun 12, 2001, 2:18 p.m.: 24 IR 3070)*

675 IAC 14-4.2-129 Section G2411.1.1; utility piping systems located within buildings

Authority: IC 22-13-2-2; IC 22-13-2-13

Affected: IC 22-12; IC 22-13; IC 22-14; IC 22-15; IC 36-7

Sec. 129. Delete SECTION G2411.1.1. *(Fire Prevention and Building Safety Commission; 675 IAC 14-4.2-129; filed May 23, 2001, 4:02 p.m.: 24 IR 3057; errata filed Jun 12, 2001, 2:18 p.m.: 24 IR 3070)*

675 IAC 14-4.2-130 Section G2412.2; maximum gas demand

Authority: IC 22-13-2-2; IC 22-13-2-13

Affected: IC 22-12; IC 22-13; IC 22-14; IC 22-15; IC 36-7

Sec. 130. Delete in the last sentence of the first paragraph of SECTION G2412.2 “a qualified” and substitute “an approved”. *(Fire Prevention and Building Safety Commission; 675 IAC 14-4.2-130; filed May 23, 2001, 4:02 p.m.: 24 IR 3057; errata filed Jun 12, 2001, 2:18 p.m.: 24 IR 3070)*

675 IAC 14-4.2-131 Section G2413.1; material application

Authority: IC 22-13-2-2; IC 22-13-2-13

Affected: IC 22-12; IC 22-13; IC 22-14; IC 22-15; IC 36-7

Sec. 131. Change SECTION G2413.1 as follows: (a) Change “approached by the code official” to “approved by the building official”.

(b) Change “imited” to “limited”. *(Fire Prevention and Building Safety Commission; 675 IAC 14-4.2-131; filed May 23, 2001, 4:02 p.m.: 24 IR 3057; errata filed Jun 12, 2001, 2:18 p.m.: 24 IR 3070)*

675 IAC 14-4.2-132 Section G2413.3; other materials

Authority: IC 22-13-2-2; IC 22-13-2-13

Affected: IC 22-12; IC 22-13; IC 22-14; IC 22-15; IC 36-7

Sec. 132. Change “code official” to “building official”. *(Fire Prevention and Building Safety Commission; 675 IAC 14-4.2-132; filed May 23, 2001, 4:02 p.m.: 24 IR 3057; errata filed Jun 12, 2001, 2:18 p.m.: 24 IR 3070)*

675 IAC 14-4.2-133 Section G2414.3; piping in concealed locations

Authority: IC 22-13-2-2; IC 22-13-2-13

Affected: IC 22-12; IC 22-13; IC 22-14; IC 22-15; IC 36-7

Sec. 133. Delete in SECTION G2414.3 “Standard for the Storage and Handling of Liquefied Petroleum Gases”. *(Fire Prevention and Building Safety Commission; 675 IAC 14-4.2-133; filed May 23, 2001, 4:02 p.m.: 24 IR 3057; errata filed Jun 12, 2001, 2:18 p.m.: 24 IR 3070)*

675 IAC 14-4.2-134 Section G2414.8; protection against corrosion

Authority: IC 22-13-2-2; IC 22-13-2-13

Affected: IC 22-12; IC 22-13; IC 22-14; IC 22-15; IC 36-7

Sec. 134. Change in the third sentence of SECTION G2414.8 “in a manner satisfactory to the code official” to read “as approved by the building official”. *(Fire Prevention and Building Safety Commission; 675 IAC 14-4.2-134; filed May 23, 2001, 4:02 p.m.: 24 IR 3057; errata filed Jun 12, 2001, 2:18 p.m.: 24 IR 3070)*

675 IAC 14-4.2-135 Section G2414.9.1; individual outside appliances

Authority: IC 22-13-2-2; IC 22-13-2-13

Affected: IC 22-12; IC 22-13; IC 22-14; IC 22-15; IC 36-7

Sec. 135. Delete SECTION G2414.9.1. *(Fire Prevention and Building Safety Commission; 675 IAC 14-4.2-135; filed May 23, 2001, 4:02 p.m.: 24 IR 3057; errata filed Jun 12, 2001, 2:18 p.m.: 24 IR 3070)*

675 IAC 14-4.2-136 Section G2414.16; testing of piping

Authority: IC 22-13-2-2; IC 22-13-2-13

Affected: IC 22-12; IC 22-13; IC 22-14; IC 22-15; IC 36-7

Sec. 136. Delete the word “, inspection” in the last sentence of SECTION G2414.16. *(Fire Prevention and Building Safety Commission; 675 IAC 14-4.2-136; filed May 23, 2001, 4:02 p.m.: 24 IR 3057; errata filed Jun 12, 2001, 2:18 p.m.: 24 IR 3070)*

675 IAC 14-4.2-137 Section G2416; inspection, testing, and purging

Authority: IC 22-13-2-2; IC 22-13-2-13

Affected: IC 22-12; IC 22-13; IC 22-14; IC 22-15; IC 36-7

Sec. 137. Change SECTION G2416 as follows: (a) Change the title to read as follows: SECTION G2416 (406) TESTING AND PURGING.

(b) Delete in SECTION G2416.1 “inspected and”.

(c) Delete SECTION G2416.1.1.

(d) Change the title and text of SECTION G2416.1.2 to read as follows: Additions. In the event additions are made following the pressure test, the affected piping shall be tested.

EXCEPTION: Minor additions, provided the work and connections are tested with a noncorrosive leak-detecting fluid or other leak-detecting methods approved by the building official.

(Fire Prevention and Building Safety Commission; 675 IAC 14-4.2-137; filed May 23, 2001, 4:02 p.m.: 24 IR 3057; errata filed Jun 12, 2001, 2:18 p.m.: 24 IR 3070)

675 IAC 14-4.2-138 Section G2416.6.2; before turning gas on

Authority: IC 22-13-2-2; IC 22-13-2-13

Affected: IC 22-12; IC 22-13; IC 22-14; IC 22-15; IC 36-7

Sec. 138. Change SECTION G2416.6.2 to read as follows: Before gas is introduced into a system of new gas piping, it shall be determined that there are no open fittings or ends and that all manual valves at outlets on equipment are closed and all unused valves at outlets are closed and plugged or capped. *(Fire Prevention and Building Safety Commission; 675 IAC 14-4.2-138; filed May 23, 2001, 4:02 p.m.: 24 IR 3058; errata filed Jun 12, 2001, 2:18 p.m.: 24 IR 3070)*

675 IAC 14-4.2-139 Section G2416.6.3; test for leakage

Authority: IC 22-13-2-2; IC 22-13-2-13

Affected: IC 22-12; IC 22-13; IC 22-14; IC 22-15; IC 36-7

Sec. 139. (a) Delete in SECTION G2416.6.3 “or into a system that has been initially restored after an interruption of service,”.

(b) Change the last sentence of SECTION G2416.6.3 to read as follows: If leakage is indicated, the gas supply shall be shut off until the leakage is corrected. *(Fire Prevention and Building Safety Commission; 675 IAC 14-4.2-139; filed May 23, 2001, 4:02 p.m.: 24 IR 3058; errata filed Jun 12, 2001, 2:18 p.m.: 24 IR 3070)*

675 IAC 14-4.2-140 Section G2416.7.1; removal from service

Authority: IC 22-13-2-2; IC 22-13-2-13

Affected: IC 22-12; IC 22-13; IC 22-14; IC 22-15; IC 36-7

Sec. 140. Delete “servicing,” from SECTION G2416.7.1 and substitute “an”. *(Fire Prevention and Building Safety Commission; 675 IAC 14-4.2-140; filed May 23, 2001, 4:02 p.m.: 24 IR 3058; errata filed Jun 12, 2001, 2:18 p.m.: 24 IR 3070)*

675 IAC 14-4.2-141 Section G2419.2; meter valve

Authority: IC 22-13-2-2; IC 22-13-2-13

Affected: IC 22-12; IC 22-13; IC 22-14; IC 22-15; IC 36-7

Sec. 141. Delete SECTION G2419.2. *(Fire Prevention and Building Safety Commission; 675 IAC 14-4.2-141; filed May 23, 2001, 4:02 p.m.: 24 IR 3058; errata filed Jun 12, 2001, 2:18 p.m.: 24 IR 3070)*

675 IAC 14-4.2-142 Section G2422; CNG gas-dispensing systems

Authority: IC 22-13-2-2; IC 22-13-2-13

Affected: IC 22-12; IC 22-13; IC 22-14; IC 22-15; IC 36-7

Sec. 142. Delete SECTION G2422. *(Fire Prevention and Building Safety Commission; 675 IAC 14-4.2-142; filed May 23, 2001, 4:02 p.m.: 24 IR 3058; errata filed Jun 12, 2001, 2:18 p.m.: 24 IR 3070)*

675 IAC 14-4.2-143 Section G2424.1; scope

Authority: IC 22-13-2-2; IC 22-13-2-13

Affected: IC 22-12; IC 22-13; IC 22-14; IC 22-15; IC 36-7

Sec. 143. Delete from SECTION G2424.1 “, maintenance, repair”. *(Fire Prevention and Building Safety Commission; 675 IAC 14-4.2-143; filed May 23, 2001, 4:02 p.m.: 24 IR 3058; errata filed Jun 12, 2001, 2:18 p.m.: 24 IR 3070)*

675 IAC 14-4.2-144 Section G2426.8; venting system location

Authority: IC 22-13-2-2; IC 22-13-2-13

Affected: IC 22-12; IC 22-13; IC 22-14; IC 22-15; IC 36-7

Sec. 144. Change SECTION G2426.8, item 4 to read as follows: 4. Through-the-wall vents for Categories II and IV appliances and noncategorized appliances shall not terminate over walkways or over an area where condensate or vapor could be detrimental to the operation of regulators, relief valves, or other equipment. *(Fire Prevention and Building Safety Commission; 675 IAC 14-4.2-144; filed May 23, 2001, 4:02 p.m.: 24 IR 3058; errata filed Jun 12, 2001, 2:18 p.m.: 24 IR 3070)*

675 IAC 14-4.2-145 Section G2426.9; condensation drain

Authority: IC 22-13-2-2; IC 22-13-2-13

Affected: IC 22-12; IC 22-13; IC 22-14; IC 22-15; IC 36-7

Sec. 145. Delete SECTION G2426.9 and substitute to read as follows: For collection and disposal of condensate from venting systems see local ordinance. *(Fire Prevention and Building Safety Commission; 675 IAC 14-4.2-145; filed May 23, 2001, 4:02 p.m.: 24 IR 3058; errata filed Jun 12, 2001, 2:18 p.m.: 24 IR 3070)*

675 IAC 14-4.2-146 Section G2426.6.10; marking

Authority: IC 22-13-2-2; IC 22-13-2-13

Affected: IC 22-12; IC 22-13; IC 22-14; IC 22-15; IC 36-7

Sec. 146. Delete SECTION G2426.6.10. *(Fire Prevention and Building Safety Commission; 675 IAC 14-4.2-146; filed May 23, 2001, 4:02 p.m.: 24 IR 3058; errata filed Jun 12, 2001, 2:18 p.m.: 24 IR 3070)*

675 IAC 14-4.2-147 Section G2427.1; definitions

Authority: IC 22-13-2-2; IC 22-13-2-13

Affected: IC 22-12; IC 22-13; IC 22-14; IC 22-15; IC 36-7

Sec. 147. Add to the definition of APPLIANCE CATEGORIZED VENT DIAMETER/AREA in SECTION G2427.1 “approved” after “with” and before “nationally”. *(Fire Prevention and Building Safety Commission; 675 IAC 14-4.2-147; filed May 23, 2001, 4:02 p.m.: 24 IR 3058; errata filed Jun 12, 2001, 2:18 p.m.: 24 IR 3070)*

675 IAC 14-4.2-148 Section G2430.1; scope

Authority: IC 22-13-2-2; IC 22-13-2-13

Affected: IC 22-12; IC 22-13; IC 22-14; IC 22-15; IC 36-7

Sec. 148. Change SECTION G2430.1 to read as follows: This chapter shall govern the approval, design, installation, construction, and alteration of the appliances and equipment specifically identified herein. *(Fire Prevention and Building Safety Commission; 675 IAC 14-4.2-148; filed May 23, 2001, 4:02 p.m.: 24 IR 3059; errata filed Jun 12, 2001, 2:18 p.m.: 24 IR 3070)*

675 IAC 14-4.2-149 Section G2436; clothes dryer

Authority: IC 22-13-2-2; IC 22-13-2-13
Affected: IC 22-12; IC 22-13; IC 22-14; IC 22-15; IC 36-7

Sec. 149. Delete SECTION G2436. *(Fire Prevention and Building Safety Commission; 675 IAC 14-4.2-149; filed May 23, 2001, 4:02 p.m.: 24 IR 3059; errata filed Jun 12, 2001, 2:18 p.m.: 24 IR 3070)*

675 IAC 14-4.2-150 Section G2437.5.1; maximum length
Authority: IC 22-13-2-2; IC 22-13-2-13
Affected: IC 22-12; IC 22-13; IC 22-14; IC 22-15; IC 36-7

Sec. 150. Change in the first sentence of SECTION G2437.5.1 “25 feet (7620 mm)” to read “35 feet”. *(Fire Prevention and Building Safety Commission; 675 IAC 14-4.2-150; filed May 23, 2001, 4:02 p.m.: 24 IR 3059; errata filed Jun 12, 2001, 2:18 p.m.: 24 IR 3070)*

675 IAC 14-4.2-151 Section G2438; sauna heaters
Authority: IC 22-13-2-2; IC 22-13-2-13
Affected: IC 22-12; IC 22-13; IC 22-14; IC 22-15; IC 36-7

Sec. 151. Delete SECTION G2438. *(Fire Prevention and Building Safety Commission; 675 IAC 14-4.2-151; filed May 23, 2001, 4:02 p.m.: 24 IR 3059; errata filed Jun 12, 2001, 2:18 p.m.: 24 IR 3070)*

675 IAC 14-4.2-152 Section G2439; pool and spa heaters
Authority: IC 22-13-2-2; IC 22-13-2-13
Affected: IC 22-12; IC 22-13; IC 22-14; IC 22-15; IC 36-7

Sec. 152. Delete SECTION G2439. *(Fire Prevention and Building Safety Commission; 675 IAC 14-4.2-152; filed May 23, 2001, 4:02 p.m.: 24 IR 3059; errata filed Jun 12, 2001, 2:18 p.m.: 24 IR 3070)*

675 IAC 14-4.2-153 Section G2445; cooking appliances
Authority: IC 22-13-2-2; IC 22-13-2-13
Affected: IC 22-12; IC 22-13; IC 22-14; IC 22-15; IC 36-7

Sec. 153. Delete SECTION G2445. *(Fire Prevention and Building Safety Commission; 675 IAC 14-4.2-153; filed May 23, 2001, 4:02 p.m.: 24 IR 3059; errata filed Jun 12, 2001, 2:18 p.m.: 24 IR 3070)*

675 IAC 14-4.2-154 Section G2446.1; general
Authority: IC 22-13-2-2; IC 22-13-2-13
Affected: IC 22-12; IC 22-13-2-9; IC 22-14; IC 22-15; IC 36-7

Sec. 154. Add an exception to the end of SECTION G2446.1 to read as follows: EXCEPTION: Water heaters regulated by the Boiler and Pressure Vessel Rules Board (680 IAC 2) under IC 22-13-2-9 are not regulated by this code. *(Fire Prevention and Building Safety Commission; 675 IAC 14-4.2-154; filed May 23, 2001, 4:02 p.m.: 24 IR 3059; errata filed Jun 12, 2001, 2:18 p.m.: 24 IR 3070)*

675 IAC 14-4.2-155 Section G2450.1; general
Authority: IC 22-13-2-2; IC 22-13-2-13
Affected: IC 22-12; IC 22-13-2-9; IC 22-14; IC 22-15; IC 36-7

Sec. 155. Change SECTION G2450.1 as follows: (a) Change the second sentence of SECTION G2450.1 as follows: Delete “When required by the code official” and capitalize “the” after “official” and before “boiler”.

(b) Add an exception to the end of SECTION G2450.1 to read as follows: EXCEPTION: Boilers regulated by the Boiler and Pressure Vessel Rules Board (680 IAC 2) under IC 22-13-2-9 are not regulated by this code. *(Fire Prevention and Building Safety Commission; 675 IAC 14-4.2-155; filed May 23, 2001, 4:02 p.m.: 24 IR 3059; errata filed Jun 12, 2001, 2:18 p.m.: 24 IR 3070)*

675 IAC 14-4.2-156 Section P2501; general

Authority: IC 22-13-2-2; IC 22-13-2-13

Affected: IC 22-12; IC 22-13; IC 22-14; IC 22-15; IC 36-7

Sec. 156. Delete SECTION P2501 and substitute to read as follows: The provisions of Chapters 1, 2, and 25 through 32 shall establish the requirements for plumbing and plumbing systems. Compliance with the Indiana Plumbing Code (675 IAC 16) shall be allowed instead of compliance with this code. *(Fire Prevention and Building Safety Commission; 675 IAC 14-4.2-156; filed May 23, 2001, 4:02 p.m.: 24 IR 3059; errata filed Jun 12, 2001, 2:18 p.m.: 24 IR 3070)*

675 IAC 14-4.2-157 Section P2502; existing plumbing systems

Authority: IC 22-13-2-2; IC 22-13-2-13

Affected: IC 22-12; IC 22-13; IC 22-14; IC 22-15; IC 36-7

Sec. 157. Delete SECTION P2502 and substitute to read as follows: See the General Administrative Rules (675 IAC 12). *(Fire Prevention and Building Safety Commission; 675 IAC 14-4.2-157; filed May 23, 2001, 4:02 p.m.: 24 IR 3059; errata filed Jun 12, 2001, 2:18 p.m.: 24 IR 3070)*

675 IAC 14-4.2-158 Section P2503.1; inspection required

Authority: IC 22-13-2-2; IC 22-13-2-13

Affected: IC 22-12; IC 22-13; IC 22-14; IC 22-15; IC 36-7

Sec. 158. Delete SECTION P2503.1. *(Fire Prevention and Building Safety Commission; 675 IAC 14-4.2-158; filed May 23, 2001, 4:02 p.m.: 24 IR 3059; errata filed Jun 12, 2001, 2:18 p.m.: 24 IR 3070)*

675 IAC 14-4.2-159 Section P2503.2; concealment

Authority: IC 22-13-2-2; IC 22-13-2-13

Affected: IC 22-12; IC 22-13; IC 22-14; IC 22-15; IC 36-7

Sec. 159. Delete in SECTION P2503.2 “, inspected”. *(Fire Prevention and Building Safety Commission; 675 IAC 14-4.2-159; filed May 23, 2001, 4:02 p.m.: 24 IR 3060; errata filed Jun 12, 2001, 2:18 p.m.: 24 IR 3070)*

675 IAC 14-4.2-160 Section P2503.3; responsibility of permitter

Authority: IC 22-13-2-2; IC 22-13-2-13

Affected: IC 22-12; IC 22-13; IC 22-14; IC 22-15; IC 36-7

Sec. 160. Delete SECTION P2503.3. *(Fire Prevention and Building Safety Commission; 675 IAC 14-4.2-160; filed May 23, 2001, 4:02 p.m.: 24 IR 3060; errata filed Jun 12, 2001, 2:18 p.m.: 24 IR 3070)*

675 IAC 14-4.2-161 Section P2503.5.2; finished plumbing

Authority: IC 22-13-2-2; IC 22-13-2-13

Affected: IC 22-12; IC 22-13; IC 22-14; IC 22-15; IC 36-7

Sec. 161. Delete in SECTION P2503.5.2, item 2, “the local administrative authority” and substitute “local ordinance”. *(Fire Prevention and Building Safety Commission; 675 IAC 14-4.2-161; filed May 23, 2001, 4:02 p.m.: 24 IR 3060; errata filed Jun 12, 2001, 2:18 p.m.: 24 IR 3070)*

675 IAC 14-4.2-162 Section P2503.7; inspection and testing of backflow prevention devices

Authority: IC 22-13-2-2; IC 22-13-2-13

Affected: IC 22-12; IC 22-13; IC 22-14; IC 22-15; IC 36-7

Sec. 162. Change the title and text of SECTION P2503.7 to read as follows: Testing of backflow prevention devices. Testing of backflow prevention devices shall comply with SECTION P2503.7.2. *(Fire Prevention and Building Safety Commission; 675 IAC 14-4.2-162; filed May 23, 2001, 4:02 p.m.: 24 IR 3060; errata filed Jun 12, 2001, 2:18 p.m.: 24 IR 3070)*

675 IAC 14-4.2-163 Section P2503.7.1; inspections

Authority: IC 22-13-2-2; IC 22-13-2-13
Affected: IC 22-12; IC 22-13; IC 22-14; IC 22-15; IC 36-7

Sec. 163. Delete SECTION P2503.7.1. *(Fire Prevention and Building Safety Commission; 675 IAC 14-4.2-163; filed May 23, 2001, 4:02 p.m.: 24 IR 3060; errata filed Jun 12, 2001, 2:18 p.m.: 24 IR 3070)*

675 IAC 14-4.2-164 Section P2503.7.2; testing

Authority: IC 22-13-2-2; IC 22-13-2-13
Affected: IC 22-12; IC 22-13; IC 22-14; IC 22-15; IC 36-7

Sec. 164. Change SECTION P2503.7.2 to read as follows: Reduced pressure principle backflow preventers, double check valve assemblies, double-detector check valve assemblies, and pressure vacuum breaker assemblies shall be tested at the time of installation. *(Fire Prevention and Building Safety Commission; 675 IAC 14-4.2-164; filed May 23, 2001, 4:02 p.m.: 24 IR 3060; errata filed Jun 12, 2001, 2:18 p.m.: 24 IR 3070)*

675 IAC 14-4.2-165 Section P2603.1; protection against physical damage

Authority: IC 22-13-2-2; IC 22-13-2-13
Affected: IC 22-12; IC 22-13; IC 22-14; IC 22-15; IC 36-7

Sec. 165. Delete in SECTION P2603.1 “or repairing”. *(Fire Prevention and Building Safety Commission; 675 IAC 14-4.2-165; filed May 23, 2001, 4:02 p.m.: 24 IR 3060; errata filed Jun 12, 2001, 2:18 p.m.: 24 IR 3070)*

675 IAC 14-4.2-166 Section P2603.2.1; protection against physical damage

Authority: IC 22-13-2-2; IC 22-13-2-13
Affected: IC 22-12; IC 22-13; IC 22-14; IC 22-15; IC 36-7

Sec. 166. (a) Change in SECTION P2603.2.1 “1.5 inches (38 mm)” to read “1¼ inches”.

(b) Delete in SECTION P2603.2.1 “and shall extend a minimum of 2 inches (51 mm) above sole plates and below top plates”. *(Fire Prevention and Building Safety Commission; 675 IAC 14-4.2-166; filed May 23, 2001, 4:02 p.m.: 24 IR 3060; errata filed Jun 12, 2001, 2:18 p.m.: 24 IR 3070)*

675 IAC 14-4.2-167 Section P2603.5; pipes through footings or foundation walls

Authority: IC 22-13-2-2; IC 22-13-2-13
Affected: IC 22-12; IC 22-13; IC 22-14; IC 22-15; IC 36-7

Sec. 167. Delete in SECTION P2603.5 “two pipe sizes”. *(Fire Prevention and Building Safety Commission; 675 IAC 14-4.2-167; filed May 23, 2001, 4:02 p.m.: 24 IR 3060; errata filed Jun 12, 2001, 2:18 p.m.: 24 IR 3070)*

675 IAC 14-4.2-168 Section P2604.5; inspection

Authority: IC 22-13-2-2; IC 22-13-2-13
Affected: IC 22-12; IC 22-13; IC 22-14; IC 22-15; IC 36-7

Sec. 168. Delete in SECTION P2604.5 “inspected”. *(Fire Prevention and Building Safety Commission; 675 IAC 14-4.2-168; filed May 23, 2001, 4:02 p.m.: 24 IR 3060; errata filed Jun 12, 2001, 2:18 p.m.: 24 IR 3070)*

675 IAC 14-4.2-169 Section P2706.2; standpipes

Authority: IC 22-13-2-2; IC 22-13-2-13
Affected: IC 22-12; IC 22-13; IC 22-14; IC 22-15; IC 36-7

Sec. 169. Add an exception to the end of SECTION P2706.2 to read as follows: EXCEPTION: A one and one-half (1½) inch standpipe shall extend a minimum of thirty (30) inches and a maximum of forty-two (42) inches. *(Fire Prevention and Building Safety Commission; 675 IAC 14-4.2-169; filed May 23, 2001, 4:02 p.m.: 24 IR 3060; errata filed Jun 12, 2001, 2:18 p.m.: 24 IR 3070)*

675 IAC 14-4.2-170 Section P2706.2.1; laundry tray connection

Authority: IC 22-13-2-2; IC 22-13-2-13

Affected: IC 22-12; IC 22-13; IC 22-14; IC 22-15; IC 36-7

Sec. 170. Delete the last sentence of SECTION P2706.2.1. *(Fire Prevention and Building Safety Commission; 675 IAC 14-4.2-170; filed May 23, 2001, 4:02 p.m.: 24 IR 3061; errata filed Jun 12, 2001, 2:18 p.m.: 24 IR 3070)*

675 IAC 14-4.2-171 Section P2717.3; sink, dishwasher, and food grinder

Authority: IC 22-13-2-2; IC 22-13-2-13

Affected: IC 22-12; IC 22-13; IC 22-14; IC 22-15; IC 36-7

Sec. 171. Change the last sentence of P2717.3 to read as follows: The dishwasher waste line shall rise and be securely fastened. *(Fire Prevention and Building Safety Commission; 675 IAC 14-4.2-171; filed May 23, 2001, 4:02 p.m.: 24 IR 3061; errata filed Jun 12, 2001, 2:18 p.m.: 24 IR 3070)*

675 IAC 14-4.2-172 Section P2802.2; scald protection

Authority: IC 22-13-2-2; IC 22-13-2-13

Affected: IC 22-12; IC 22-13; IC 22-14; IC 22-15; IC 36-7

Sec. 172. Change SECTION P2802.2 as follows: (a) Change “requires” to “allows”.

(b) Add after “temper the water” and before “for”, “not to exceed 140°F”. *(Fire Prevention and Building Safety Commission; 675 IAC 14-4.2-172; filed May 23, 2001, 4:02 p.m.: 24 IR 3061; errata filed Jun 12, 2001, 2:18 p.m.: 24 IR 3070)*

675 IAC 14-4.2-173 Section P2901.1; potable water required

Authority: IC 22-13-2-2; IC 22-13-2-13

Affected: IC 22-12; IC 22-13; IC 22-14; IC 22-15; IC 36-7

Sec. 173. Change in SECTION P2901.1 “appropriate” to “approved”. *(Fire Prevention and Building Safety Commission; 675 IAC 14-4.2-173; filed May 23, 2001, 4:02 p.m.: 24 IR 3061; errata filed Jun 12, 2001, 2:18 p.m.: 24 IR 3070)*

675 IAC 14-4.2-174 Section P2903.8.5; support and protection

Authority: IC 22-13-2-2; IC 22-13-2-13

Affected: IC 22-12; IC 22-13; IC 22-14; IC 22-15; IC 36-7

Sec. 174. Delete the last sentence of SECTION P2903.8.5. *(Fire Prevention and Building Safety Commission; 675 IAC 14-4.2-174; filed May 23, 2001, 4:02 p.m.: 24 IR 3061; errata filed Jun 12, 2001, 2:18 p.m.: 24 IR 3070)*

675 IAC 14-4.2-175 Section P2903.9.1; service valve

Authority: IC 22-13-2-2; IC 22-13-2-13

Affected: IC 22-12; IC 22-13; IC 22-14; IC 22-15; IC 36-7

Sec. 175. Change in the last sentence of SECTION P2903.9.1 “requirements” to “ordinance”. *(Fire Prevention and Building Safety Commission; 675 IAC 14-4.2-175; filed May 23, 2001, 4:02 p.m.: 24 IR 3061; errata filed Jun 12, 2001, 2:18 p.m.: 24 IR 3070)*

675 IAC 14-4.2-176 Section P2907; drinking water treatment units

Authority: IC 22-13-2-2; IC 22-13-2-13

Affected: IC 22-12; IC 22-13; IC 22-14; IC 22-15; IC 36-7

Sec. 176. Delete SECTION P2907. *(Fire Prevention and Building Safety Commission; 675 IAC 14-4.2-176; filed May 23, 2001, 4:02 p.m.: 24 IR 3061; errata filed Jun 12, 2001, 2:18 p.m.: 24 IR 3070)*

675 IAC 14-4.2-177 Section P3101.4 and SECTION P3103.2; extension outside a structure and frost closure

Authority: IC 22-13-2-2; IC 22-13-2-13

Affected: IC 22-12; IC 22-13; IC 22-14; IC 22-15; IC 36-7

Sec. 177. Delete SECTIONS P3101.4 and P3103.2. *(Fire Prevention and Building Safety Commission; 675 IAC 14-4.2-177; filed May 23, 2001, 4:02 p.m.: 24 IR 3061; errata filed Jun 12, 2001, 2:18 p.m.: 24 IR 3070)*

675 IAC 14-4.2-178 Table P3105.1; maximum distance of fixture trap from vent

Authority: IC 22-13-2-2; IC 22-13-2-13

Affected: IC 22-12; IC 22-13; IC 22-14; IC 22-15; IC 36-7

Sec. 178. Add a note to TABLE P3105.1 to read as follows: NOTE: A trap arm serving only a bath tub or shower may be increased to nine (9) feet with a slope of not less than one-eighth ($\frac{1}{8}$) inch per foot. *(Fire Prevention and Building Safety Commission; 675 IAC 14-4.2-178; filed May 23, 2001, 4:02 p.m.: 24 IR 3061; errata filed Jun 12, 2001, 2:18 p.m.: 24 IR 3070)*

675 IAC 14-4.2-179 Section P3201.4; building traps

Authority: IC 22-13-2-2; IC 22-13-2-13

Affected: IC 22-12; IC 22-13; IC 22-14; IC 22-15; IC 36-7

Sec. 179. Delete SECTION P3201.4. *(Fire Prevention and Building Safety Commission; 675 IAC 14-4.2-179; filed May 23, 2001, 4:02 p.m.: 24 IR 3061; errata filed Jun 12, 2001, 2:18 p.m.: 24 IR 3070)*

675 IAC 14-4.2-180 Table P3201.7; size of traps and trap arms for plumbing fixtures

Authority: IC 22-13-2-2; IC 22-13-2-13

Affected: IC 22-12; IC 22-13; IC 22-14; IC 22-15; IC 36-7

Sec. 180. Change TABLE P3201.7 as follows: (a) Change the shower trap size minimum from “2” to “1½”.

(b) Add a note to read as follows: NOTE: A clothes washer standpipe may be one and one-half (1½) inches when installed in accordance with SECTION P2706.2. *(Fire Prevention and Building Safety Commission; 675 IAC 14-4.2-180; filed May 23, 2001, 4:02 p.m.: 24 IR 3061; errata filed Jun 12, 2001, 2:18 p.m.: 24 IR 3070)*

675 IAC 14-4.2-181 Section E3301.2; scope

Authority: IC 22-13-2-2; IC 22-13-2-13

Affected: IC 22-12; IC 22-13; IC 22-14; IC 22-15; IC 36-7

Sec. 181. Change SECTION E3301.2 to read as follows: Chapters 1 and 33 through 42 shall cover the installation of electrical systems, equipment and components for the permanent heating, ventilating, air conditioning, electrical, plumbing, sanitary, emergency detection, emergency communication, or fire or explosion suppression systems that are part of a Class 1 structure - townhouse or Class 2 structure -1 and 2 family dwelling.

Services within the scope of this code shall be limited to 120/240-volt, 0 to 400 ampere, single-phase systems.

The omission from these chapters of any material or method of construction provided for in the Indiana Electrical Code (675 IAC 17) shall not be construed as prohibiting the use of such material or method of construction. Electrical systems, equipment or components not specifically addressed in these chapters shall comply with the applicable provisions of the Indiana Electrical Code (675 IAC 17).

Compliance with the Indiana Electrical Code (675 IAC 17) is allowed instead of compliance with this code. *(Fire Prevention and Building Safety Commission; 675 IAC 14-4.2-181; filed May 23, 2001, 4:02 p.m.: 24 IR 3062; errata filed Jun 12, 2001, 2:18 p.m.: 24 IR 3070)*

675 IAC 14-4.2-182 Section E3301.3; not covered

Authority: IC 22-13-2-2; IC 22-13-2-13

Affected: IC 22-12; IC 22-13; IC 22-14; IC 22-15; IC 36-7

Sec. 182. Add item number 3 to SECTION E3301.3 to read as follows: 3. Installations not part of a Class 1 structure -

townhouse or Class 2 structure - 1 and 2 family dwelling. *(Fire Prevention and Building Safety Commission; 675 IAC 14-4.2-182; filed May 23, 2001, 4:02 p.m.: 24 IR 3062; errata filed Jun 12, 2001, 2:18 p.m.: 24 IR 3070)*

675 IAC 14-4.2-183 Section E3303.2; inspection required

Authority: IC 22-13-2-2; IC 22-13-2-13

Affected: IC 22-12; IC 22-13; IC 22-14; IC 22-15; IC 36-7

Sec. 183. Delete SECTION E3303.2. *(Fire Prevention and Building Safety Commission; 675 IAC 14-4.2-183; filed May 23, 2001, 4:02 p.m.: 24 IR 3062; errata filed Jun 12, 2001, 2:18 p.m.: 24 IR 3070)*

675 IAC 14-4.2-184 Section E3304.2; interrupting rating

Authority: IC 22-13-2-2; IC 22-13-2-13

Affected: IC 22-12; IC 22-13; IC 22-14; IC 22-15; IC 36-7

Sec. 184. Change SECTION E3304.2 to read as follows: Equipment intended to interrupt current at fault levels shall have an interrupting rating sufficient for the nominal circuit voltage and the current that is available at the line terminals of the equipment. Equipment intended to interrupt current at other than fault levels shall have an interrupting rating at nominal circuit voltage sufficient for the current that must be interrupted. *(Fire Prevention and Building Safety Commission; 675 IAC 14-4.2-184; filed May 23, 2001, 4:02 p.m.: 24 IR 3062; errata filed Jun 12, 2001, 2:18 p.m.: 24 IR 3070)*

675 IAC 14-4.2-185 Section E3305.6; illumination

Authority: IC 22-13-2-2; IC 22-13-2-13

Affected: IC 22-12; IC 22-13; IC 22-14; IC 22-15; IC 36-7

Sec. 185. Add a sentence to the end of SECTION E3305.6 to read as follows: Additional lighting fixtures shall not be required where the work space is illuminated by an adjacent artificial light source. *(Fire Prevention and Building Safety Commission; 675 IAC 14-4.2-185; filed May 23, 2001, 4:02 p.m.: 24 IR 3062; errata filed Jun 12, 2001, 2:18 p.m.: 24 IR 3070)*

675 IAC 14-4.2-186 Section E3306.6; conductors in parallel

Authority: IC 22-13-2-2; IC 22-13-2-13

Affected: IC 22-12; IC 22-13; IC 22-14; IC 22-15; IC 36-7

Sec. 186. Change in the first sentence in SECTION E3306.6 “10” to “1/0”. *(Fire Prevention and Building Safety Commission; 675 IAC 14-4.2-186; filed May 23, 2001, 4:02 p.m.: 24 IR 3062; errata filed Jun 12, 2001, 2:18 p.m.: 24 IR 3070)*

675 IAC 14-4.2-187 Section E3401; general

Authority: IC 22-13-2-2; IC 22-13-2-13

Affected: IC 22-12; IC 22-13; IC 22-14; IC 22-15; IC 36-7

Sec. 187. Change SECTION E3401 as follows: (a) Delete the definition of APPROVED and substitute to read as follows: See the definition of APPROVED in SECTION R202.

(b) Delete the definition of LABELED and substitute as follows: See the definition of LABELED in SECTION R202.

(c) Delete the definition of LISTED and substitute to read as follows: See the definition of LISTED AND LISTING in SECTION R202. *(Fire Prevention and Building Safety Commission; 675 IAC 14-4.2-187; filed May 23, 2001, 4:02 p.m.: 24 IR 3062; errata filed Jun 12, 2001, 2:18 p.m.: 24 IR 3070)*

675 IAC 14-4.2-188 Section E3506.3; available short-circuit current

Authority: IC 22-13-2-2; IC 22-13-2-13

Affected: IC 22-12; IC 22-13; IC 22-14; IC 22-15; IC 36-7

Sec. 188. Delete from SECTION E3506.3 “, but not less than 10,000 amperes”. *(Fire Prevention and Building Safety Commission; 675 IAC 14-4.2-188; filed May 23, 2001, 4:02 p.m.: 24 IR 3062; errata filed Jun 12, 2001, 2:18 p.m.: 24 IR 3070)*

675 IAC 14-4.2-189 Section E3509.7; metal gas piping bonding

Authority: IC 22-13-2-2; IC 22-13-2-13

Affected: IC 22-12; IC 22-13; IC 22-14; IC 22-15; IC 36-7

Sec. 189. Delete from SECTION E3509.7 “and bonded to the grounding electrode system”. (*Fire Prevention and Building Safety Commission; 675 IAC 14-4.2-189; filed May 23, 2001, 4:02 p.m.: 24 IR 3063; errata filed Jun 12, 2001, 2:18 p.m.: 24 IR 3070*)

675 IAC 14-4.2-190 Section E3602.9.1; minimum branch circuit for ranges

Authority: IC 22-13-2-2; IC 22-13-2-13

Affected: IC 22-12; IC 22-13; IC 22-14; IC 22-15; IC 36-7

Sec. 190. Add EXCEPTIONS 1 and 2 to SECTION E3602.9.1 to read as follows:

EXCEPTION 1. Tap conductors supplying electric ranges, wall-mounted electric ovens, and counter-mounted electric cooking units from a 50-ampere branch circuit shall have an ampacity of not less than twenty (20) and shall be sufficient for the load to be served. The taps shall not be longer than necessary for servicing the appliance.

2. The neutral conductor of a 3-wire branch circuit supplying a household electric range, a wall-mounted oven, or a counter-mounted cooking unit shall be permitted to be smaller than the ungrounded conductors where the maximum demand of a range of 8 ¾ kW or more rating has been computed according to Column A of TABLE E3604.3(2), but shall have an ampacity of not less than seventy (70) percent of the branch-circuit rating and shall not be smaller than No. 10.

(*Fire Prevention and Building Safety Commission; 675 IAC 14-4.2-190; filed May 23, 2001, 4:02 p.m.: 24 IR 3063; errata filed Jun 12, 2001, 2:18 p.m.: 24 IR 3070*)

675 IAC 14-4.2-191 Figure E3801.4; countertop receptacles

Authority: IC 22-13-2-2; IC 22-13-2-13

Affected: IC 22-12; IC 22-13; IC 22-14; IC 22-15; IC 36-7

Sec. 191. Change FIGURE E3801.4 as follows: Add to FIGURE E3801.4 text to read “GFCI” next to the receptacle for the island countertop. (*Fire Prevention and Building Safety Commission; 675 IAC 14-4.2-191; filed May 23, 2001, 4:02 p.m.: 24 IR 3063; errata filed Jun 12, 2001, 2:18 p.m.: 24 IR 3070*)

675 IAC 14-4.2-192 Section E3802; ground-fault and arc-fault circuit-interrupter protection

Authority: IC 22-13-2-2; IC 22-13-2-13

Affected: IC 22-12; IC 22-13; IC 22-14; IC 22-15; IC 36-7

Sec. 192. Add SECTIONS E3802.9, E3802.9.1, and E3802.9.2 to the end of SECTION E3802 to read as follows:

E3802.9 ARC-FAULT CIRCUIT-INTERRUPTER-PROTECTION

E3802.9.1 Definition. An arc-fault circuit-interrupter is a device intended to provide protection from the effects of arc faults by recognizing characteristics unique to arcing and by functioning to de-energize the circuit when an arc fault is detected.

E3802.9.2 Dwelling unit bedrooms. All branch circuits that supply 125-volt, single-phase, 15- and 20- ampere receptacle outlets installed in dwelling unit bedrooms shall be protected by an arc-fault circuit interrupter(s). This requirement shall become effective January 1, 2002.

(*Fire Prevention and Building Safety Commission; 675 IAC 14-4.2-192; filed May 23, 2001, 4:02 p.m.: 24 IR 3063; errata filed Jun 12, 2001, 2:18 p.m.: 24 IR 3070*)

675 IAC 14-4.2-193 Section E3808.7; load-side equipment

Authority: IC 22-13-2-2; IC 22-13-2-13

Affected: IC 22-12; IC 22-13; IC 22-14; IC 22-15; IC 36-7

Sec. 193. (a) Change the exception in SECTION E3808.7 to read as follows: **EXCEPTION 1.** For separate buildings, in accordance with SECTION E3507.3.

(b) Add **EXCEPTION 2** to SECTION E3808.7 to read as follows: **EXCEPTION 2.** It shall be permissible to ground meter enclosures by connection to the grounded circuit conductor on the load-side of the service if:

(1) all meter enclosures are located near the service disconnecting means; and

(2) the size of the grounded circuit conductor is not smaller than the size specified in TABLE E3808.12 for equipment grounding conductors.

(Fire Prevention and Building Safety Commission; 675 IAC 14-4.2-193; filed May 23, 2001, 4:02 p.m.: 24 IR 3063; errata filed Jun 12, 2001, 2:18 p.m.: 24 IR 3070)

675 IAC 14-4.2-194 Section E4103.6; underground wiring

Authority: IC 22-13-2-2; IC 22-13-2-13

Affected: IC 22-12; IC 22-13; IC 22-14; IC 22-15; IC 36-7

Sec. 194. Delete in the last sentence of SECTION E4103.6 “not”. *(Fire Prevention and Building Safety Commission; 675 IAC 14-4.2-194; filed May 23, 2001, 4:02 p.m.: 24 IR 3063; errata filed Jun 12, 2001, 2:18 p.m.: 24 IR 3070)*

675 IAC 14-4.2-195 Chapter 43; referenced standards

Authority: IC 22-13-2-2; IC 22-13-2-13

Affected: IC 22-12; IC 22-13; IC 22-14; IC 22-15; IC 36-7

Sec. 195. Delete in the first paragraph of CHAPTER 43 “Section 102.4” and substitute to read as follows: SECTION R102. *(Fire Prevention and Building Safety Commission; 675 IAC 14-4.2-195; filed May 23, 2001, 4:02 p.m.: 24 IR 3063; errata filed Jun 12, 2001, 2:18 p.m.: 24 IR 3070)*

675 IAC 14-4.2-196 Appendix A; sizing and capacities of gas pipe

Authority: IC 22-13-2-2; IC 22-13-2-13

Affected: IC 22-12; IC 22-13; IC 22-14; IC 22-15; IC 36-7

Sec. 196. Delete APPENDIX A. *(Fire Prevention and Building Safety Commission; 675 IAC 14-4.2-196; filed May 23, 2001, 4:02 p.m.: 24 IR 3064; errata filed Jun 12, 2001, 2:18 p.m.: 24 IR 3070)*

675 IAC 14-4.2-197 Appendix B; sizing of venting systems serving appliances equipped with draft hoods, Category 1 appliances, and appliances listed for use and Type B vents

Authority: IC 22-13-2-2; IC 22-13-2-13

Affected: IC 22-12; IC 22-13; IC 22-14; IC 22-15; IC 36-7

Sec. 197. Delete APPENDIX B. *(Fire Prevention and Building Safety Commission; 675 IAC 14-4.2-197; filed May 23, 2001, 4:02 p.m.: 24 IR 3064; errata filed Jun 12, 2001, 2:18 p.m.: 24 IR 3070)*

675 IAC 14-4.2-198 Appendix C; exit terminals of mechanical draft and direct-vent systems

Authority: IC 22-13-2-2; IC 22-13-2-13

Affected: IC 22-12; IC 22-13; IC 22-14; IC 22-15; IC 36-7

Sec. 198. Delete APPENDIX C. *(Fire Prevention and Building Safety Commission; 675 IAC 14-4.2-198; filed May 23, 2001, 4:02 p.m.: 24 IR 3064; errata filed Jun 12, 2001, 2:18 p.m.: 24 IR 3070)*

675 IAC 14-4.2-199 Appendix D; recommend procedure for safety inspection of an existing appliance installation

Authority: IC 22-13-2-2; IC 22-13-2-13

Affected: IC 22-12; IC 22-13; IC 22-14; IC 22-15; IC 36-7

Sec. 199. Delete APPENDIX D. *(Fire Prevention and Building Safety Commission; 675 IAC 14-4.2-199; filed May 23, 2001, 4:02 p.m.: 24 IR 3064; errata filed Jun 12, 2001, 2:18 p.m.: 24 IR 3070)*

675 IAC 14-4.2-200 Appendix E; manufactured housing used as dwellings

Authority: IC 22-13-2-2; IC 22-13-2-13

Affected: IC 22-12; IC 22-13; IC 22-14; IC 22-15; IC 36-7

Sec. 200. (a) Change section AE101 to read as follows: These provisions shall be applicable only to a manufactured home or mobile home used as a dwelling unit on privately owned (nonrental) lots and shall apply to the following:

1. Construction or alteration of any foundation system which is necessary to provide for the installation of a manufactured home unit.
2. Construction, installation, addition, or alteration of the building service equipment which is necessary for connecting manufactured homes to water, fuel or power supplies, and sewage systems.
3. Alterations or additions to existing manufactured homes.

The construction, alteration, and use of accessory buildings and structures and their building service equipment shall comply with the applicable requirements of the Indiana One and Two Family Dwelling Code (675 IAC 14).

These provisions shall not be applicable to the design and factory construction of manufactured homes nor shall they be deemed to authorize either modifications or additions to manufactured homes.

(b) Change subsection AE102.1 to read as follows: Manufactured homes and their building service equipment to which additions or alterations are made shall comply with all of the applicable requirements of the Indiana One and Two Family Dwelling Code (675 IAC 14), for new facilities.

(c) Change the title and text of subsection AE102.2 to read as follows: AE102.2 Additions. Additions made to a manufactured home shall conform to the requirements of this code and all other applicable Indiana codes. Additions shall be structurally independent from the manufactured home.

EXCEPTION: Structural independence need not be provided when structural calculations are approved by the building official or when the manufacturer of the manufactured home accepts the structural change that does not provide structural independence.

(d) Add subsection AE102.2.1 to read as follows: AE102.2.1 Alterations. Alterations may be made to any manufactured home or to its building service equipment without requiring the existing manufactured home or its building service equipment to comply with all the requirements of these provisions, provided the alteration or additions conform to that required for new construction, and provided further that no hazard to life, health, or safety will be created by such additions or alterations.

(e) Delete subsection AE102.3 without substitution.

(f) Change subsection AE102.4 to read as follows: The use or occupancy of any manufactured home shall not be changed unless evidence is provided to show compliance with the applicable rules of the Fire Prevention and Building Safety Commission for the new use or occupancy and be released for construction when required by the General Administrative Rules (675 IAC 12).

(g) Delete AE102.5 without substitution.

(h) Change subsection AE301.1 to read as follows: Where required by local ordinance, a manufactured home shall not be installed or altered without first obtaining a permit.

(i) Change the title and text of subsection AE301.2 to read as follows: AE301.2 Additions and alterations to a manufactured home. Where required by local ordinance, a permit shall be obtained to alter, remodel, or add accessory buildings or structures to a manufactured home.

(j) Delete subsection AE301.3 without substitution.

(k) Delete subsection AE301.4 without substitution.

(l) Delete section AE302 without substitution.

(m) Delete section AE303 without substitution.

(n) Delete section AE304 without substitution.

(o) Delete section AE305 without substitution.

(p) Delete section AE306 without substitution.

(q) Delete section AE307 without substitution.

(r) Change section AE402 to read as follows: Manufactured homes and their accessory buildings shall be located on the property in accordance with the applicable sections of the Indiana One and Two Family Dwelling Code (675 IAC 14) and the ordinances of the jurisdiction in which the home is sited.

(s) Change the exception in subsection AE501.1 to read as follows: EXCEPTION: When specifically approved by the building official, foundation and anchoring systems which are constructed in accordance with the methods specified in Section A600 of this code.

(t) Change subsection AE502.5 to read as follows: Provisions shall be made for the control and drainage of surface water away from the manufactured home in accordance with Section 401.3 of this code.

(u) Change subsection AE504 to read as follows: Accessory buildings shall not be structurally supported by, or attached to, a manufactured home unless engineering calculations to substantiate any proposed structural connections are approved by the building official.

(v) Change section AE505 to read as follows: The alteration, replacement, or addition to the building service equipment, other than that required for the initial installation of the manufactured home, shall conform to the regulations set forth in this code.

(w) Delete subsection AE506.2 without substitution.

(x) Change subsection AE507 to read as follows: Alterations made to a manufactured home subsequent to its initial installation shall conform to the occupancy, fire safety, and energy conservation requirements set forth in, or referenced by, the applicable rules of the Fire Prevention and Building Safety Commission.

(y) Change subsection AE604.3 to read as follows: All anchoring equipment exposed to weathering shall have a resistance to weather deterioration at least equivalent to that provided by a coating of zinc on steel of not less than six hundred twenty-five thousandths (0.625) ounces per square foot on each side of the surface coated. Slit or cut edges of zinc-coated steel strapping do not need to be zinc. (Fire Prevention and Building Safety Commission; 675 IAC 14-4.2-200; filed May 23, 2001, 4:02 p.m.: 24 IR 3064; errata filed Jun 12, 2001, 2:18 p.m.: 24 IR 3070)

675 IAC 14-4.2-201 Appendix F; radon control methods

Authority: IC 22-13-2-2; IC 22-13-2-13

Affected: IC 22-12; IC 22-13; IC 22-14; IC 22-15; IC 36-7

Sec. 201. Delete APPENDIX F. (Fire Prevention and Building Safety Commission; 675 IAC 14-4.2-201; filed May 23, 2001, 4:02 p.m.: 24 IR 3065; errata filed Jun 12, 2001, 2:18 p.m.: 24 IR 3070)

675 IAC 14-4.2-202 Appendix G; swimming pools, spas, and hot tubs

Authority: IC 22-13-2-2; IC 22-13-2-13

Affected: IC 22-12; IC 22-13; IC 22-14; IC 22-15; IC 36-7

Sec. 202. Delete APPENDIX G and substitute to read as follows: See the Indiana Swimming Pool Code (675 IAC 20). (Fire Prevention and Building Safety Commission; 675 IAC 14-4.2-202; filed May 23, 2001, 4:02 p.m.: 24 IR 3065; errata filed Jun 12, 2001, 2:18 p.m.: 24 IR 3070)

675 IAC 14-4.2-203 Appendix H; patio covers

Authority: IC 22-13-2-2; IC 22-13-2-13

Affected: IC 22-12; IC 22-13; IC 22-14; IC 22-15; IC 36-7

Sec. 203. Delete APPENDIX H. (Fire Prevention and Building Safety Commission; 675 IAC 14-4.2-203; filed May 23, 2001, 4:02 p.m.: 24 IR 3065; errata filed Jun 12, 2001, 2:18 p.m.: 24 IR 3070)

675 IAC 14-4.2-204 Appendix I; private sewage disposal

Authority: IC 22-13-2-2; IC 22-13-2-13

Affected: IC 22-12; IC 22-13; IC 22-14; IC 22-15; IC 36-7

Sec. 204. Delete APPENDIX I. (*Fire Prevention and Building Safety Commission; 675 IAC 14-4.2-204; filed May 23, 2001, 4:02 p.m.: 24 IR 3065; errata filed Jun 12, 2001, 2:18 p.m.: 24 IR 3070*)

675 IAC 14-4.2-205 Appendix J; existing buildings and structures

Authority: IC 22-13-2-2; IC 22-13-2-13

Affected: IC 22-12; IC 22-13; IC 22-14; IC 22-15; IC 36-7

Sec. 205. Delete APPENDIX J and substitute to read as follows: See the General Administrative Rules (675 IAC 12) and local ordinance. (*Fire Prevention and Building Safety Commission; 675 IAC 14-4.2-205; filed May 23, 2001, 4:02 p.m.: 24 IR 3065; errata filed Jun 12, 2001, 2:18 p.m.: 24 IR 3070*)

675 IAC 14-4.2-206 Appendix K; sound transmission

Authority: IC 22-13-2-2; IC 22-13-2-13

Affected: IC 22-12; IC 22-13; IC 22-14; IC 22-15; IC 36-7

Sec. 206. Delete Appendix K. (*Fire Prevention and Building Safety Commission; 675 IAC 14-4.2-206; filed May 23, 2001, 4:02 p.m.: 24 IR 3066; errata filed Jun 12, 2001, 2:18 p.m.: 24 IR 3070*)

SECTION 2. 675 IAC 17-1.5-11.5 IS ADDED TO READ AS FOLLOWS:

675 IAC 17-1.5-11.5 Section 250-104; bonding of piping and exposed structural steel

Authority: IC 22-13-2-2; IC 22-13-2-13

Affected: IC 22-12; IC 22-13; IC 22-14; IC 22-15; IC 36-7

Sec. 11.5. Change Section 250-104(b) to read as follows: (b) Metal Gas Piping. Each aboveground portion of a gas piping system upstream from the equipment shutoff valve shall be electrically continuous. (*Fire Prevention and Building Safety Commission; 675 IAC 17-1.5-11.5; filed May 23, 2001, 4:02 p.m.: 24 IR 3066*)

SECTION 3. 675 IAC 14-4.1 IS REPEALED.

LSA Document #00-109(F)

Notice of Intent Published: 23 IR 2264

Proposed Rule Published: September 1, 2000; 23 IR 3161

Hearing Held: December 5, 2000 and February 1, 2000

Approved by Attorney General: May 18, 2001

Approved by Governor: May 22, 2001

Filed with Secretary of State: May 23, 2001, 4:02 p.m.

Incorporated Documents Filed with Secretary of State: International Residential Code for One and Two Family Dwellings